

**MONTEREY RGNL** (MRY)(KMRY) 3 SE UTC-8(-7DT) N36°35.22' W121°50.57'

**SAN FRANCISCO**

257 B TPA—1757(1500) LRA Class I, ARFF Index B NOTAM FILE MRY

**H-3B, L-3B**

**RWY 10R-28L:** H7175X150 (ASPH-GRVD) S-100, D-160, 2S-175,  
2D-300 PCN 43 F/A/X/U HIRL 1.4% up E

**IAP, AD**

**RWY 10R:** MALSR. PAPI(P4L)—GA 3.0° TCH 47'. RVR-TR Thld dsplcd  
175'.

**RWY 28L:** REIL. PAPI(P4R)—GA 3.5° TCH 45'. RVR-TR Thld dsplcd  
175'. Rgt tfc.

**RWY 10L-28R:** H3503X60 (ASPH) S-12.5 MIRL 1.7% up E

**RWY 10L:** REIL. PAPI(P2L)—GA 3.0° TCH 46'.

**RWY 28R:** REIL. PAPI(P2L)—GA 3.85° TCH 49'. Rgt tfc.

**RUNWAY DECLARED DISTANCE INFORMATION**

**RWY 10R:**TORA-7175 TODA-7175 ASDA-7175 LDA-7000

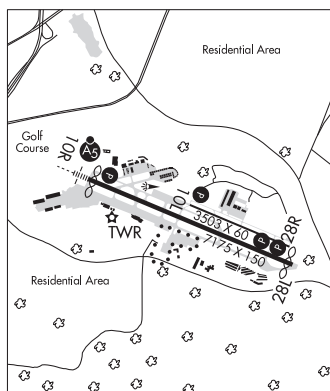
**RWY 28L:**TORA-7175 TODA-7175 ASDA-7175 LDA-7000

**ARRESTING GEAR/SYSTEM**

**RWY 10R:** EMAS

**RWY 28L:** EMAS

**SERVICE:** S4 **FUEL** 100LL, JET A **OX2, 4 L6T** When twr clsd,  
ACTIVATE MALSR Rwy 10R, REIL Rwy 28L, PAPI Rwy 10L, 10R,  
Rwy 28L and 28R, HIRL Rwy 10R-28L—CTAF. When twr clsd REIL  
10L and Rwy 28R, MIRL Rwy 10L and Rwy 28R unavbl. Rwy 28L  
VGSI unusbld byd 2 deg L of rwy cntrln and wi .75 NM of rwy thr.



**NOISE:** Noise abatement procedures in effect 0700-1500Z. Avoid flying Rwy 28L RNAV Y when possible to reduce noise impacts. Rwy 28L RNAV and RNP apchs are not to be used for practice apchs. Please avoid flights over residential areas, N and S. Ctc arpt ops 831-648-7000 option 2 or [www.montereyairport.com](http://www.montereyairport.com) for procedures. Rotary wing acft expect to follow fixed wing pattern to rwy ldg. On departure no turns blo 900' unless twr directed.

**AIRPORT REMARKS:** Attended continuously. Rwy 10L-28R not avbl for air carrier use. Fire station apron clsd to hel tfc. Rwy 10L-28R not avbl for sked acr opns with more than 9 psgr seats or unsked acr at least 31 psgr seats. Twr non-visibility area Twy A east holding bay. Acft with wingspan greater than 95' may not taxi past the terminal on Twy Alpha when an MD-80 or 757 is parked at terminal. Acft with wingspan greater than 65' prohibited on Twy Bravo between Twy Echo and Twy Delta. Facility constraints for commercial diversions. ADG III and larger with seating capacity more than 150 passengers are highly discouraged. CBP processing facilities unavailable. Overnight tie-down fee at FBO, ldg fee charged for acft over 6,000 lbs and helicopters. Overnight tie-down fee at FBO. Ctc FBO for rates and charges. Ltd transient parking PPR rqrd for large and turbine powered multi-engine acft, 831-648-7000 option 2. NOTE: See Special Notices—Arrival Alert.

**AIRPORT MANAGER:** 831-648-7000

**WEATHER DATA SOURCES:** ASOS (831) 642-0241

**COMMUNICATIONS:** CTAF 118.4 ATIS 119.25 831-375-7433 UNICOM 122.95

® NORCAL APP/DEP CON 133.0 (001°-135° MRY) 127.15 (136°-360° MRY)

**TOWER** 118.4 (1400-0500Z) **GND CON** 120.875 **CLNC DEL** 135.45

**CLEARANCE DELIVERY PHONE:** For CD or cnl IFR when ATCT clsd, ctc NorCal app con on 133.5; if una, ctc NorCal Apch at 916-361-3748.

**AIRSPACE:** CLASS C svc ctc **APP CON** svc 1400-0500Z; other times CLASS E.

**CONTINUED ON NEXT PAGE**

CONTINUED FROM PRECEDING PAGE

RADIO AIDS TO NAVIGATION: NOTAM FILE SNS.

**SALINAS (VH) (H) VORTACW** 117.3 SNS Chan 120 N36°39.83' W121°36.19' 231° 12.5 NM to fld. 81/17E.

VOR unusable:

- 010°-016° byd 22 NM blo 7,000'
- 010°-016° byd 26 NM blo 8,000'
- 016°-080° byd 22 NM blo 8,000'
- 109°-119° byd 40 NM blo 6,000'
- 109°-119° byd 58 NM
- 135°-250° byd 40 NM
- 150°-170° byd 8 NM blo 10,000'
- 295°-302° byd 40 NM
- 303°-313° byd 40 NM blo 18,000'
- 314°-338° byd 40 NM
- 339°-349° byd 40 NM blo 18,000'
- 350°-108° byd 40 NM

TACAN AZIMUTH unusable:

- 010°-080° byd 22 NM blo 8,000'
- 150°-200° blo 11,000'
- 245°-255° byd 20 NM

Aerobatic acft wi an area defined as .5 NM rds of SNS 357016.4 (5.3 NM W CVH), blo 3000', avoidance advised SR-SS

DME unusable:

- 010°-080° byd 22 NM blo 8,000'
- 150°-200° blo 11,000'

**ILS/DME** 110.7 I-MRY Chan 44 Rwy 10R. Class IA. ILS/DME unmonitored when ATCT closed. LOC unusable within 0.5 NM from thld.

**LOC/DME** 110.7 I-MTB Chan 44 Rwy 28L. LOC/DME unmonitored when ATCT closed. LOC unusable abv 2,000' MSL, 2 DME inbound to thld. LOC/DME not avbl when ATCT clsd.

**ASR/PAR**

**COMM/NAV/WEATHER REMARKS:** ASR-11 antenna located Marina Muni (OAR), remoted to Monterey Rgnl (MRY). ASR-11 serves MRY and OAR.

**MONTGOMERY-GIBBS EXEC** (See SAN DIEGO on page 260)

**MORRO BAY** N35°15.14' W120°45.57' NOTAM FILE HHR.

**LOS ANGELES**

**(VL) (L) VORTACW** 112.4 MQO Chan 71 083° 5.8 NM to San Luis Obispo Co Rgnl. 1463/16E.

**H-4H, L-3D, 7A**

VOR unusable:

- 092°-100° byd 40 NM
- 193°-205° byd 40 NM
- 290°-315° byd 7 NM blo 4,000'
- 297°-315° byd 13 NM blo 7,000'
- 315°-090° byd 7 NM blo 7,000'
- 350°-082° byd 40 NM

**MOUNT SHASTA** MHS N41°19.00' W122°19.00'/3538

**KLAMATH FALLS**

ASOS 120.775 (530) 926-1613

**H-3B, L-2I**

**MOUNTAIN VALLEY** (See TEHACHAPI on page 285)