

SOUTHERN CALIFORNIA LOGISTICS (See VICTORVILLE on page 301)

SPAULDING (See SUSANVILLE on page 283)

SQUAW VALLEY N39°10.83' W120°16.18'
RCO 122.5 (RENO RADIO)

SAN FRANCISCO
H-3B, L-9A

STOCKTON METRO (SCK)(KSCK) P (ARNG) 3 SE UTC-8(-7DT) N37°53.66' W121°14.32'

SAN FRANCISCO
H-3B, L-2F, 3B
IAP, AD

33 B Class I, ARFF Index B NOTAM FILE SCK
RWY 11L-29R: H10249X150 (ASPH-GRVD) S-40, D-150, 2D-360,
2D/2D2-650 PCR 579 F/D/X/T HIRL

RWY 11L: PAPI(P4L)—GA 3.0° TCH 75'. RVR-TMR Thld dsplcd 1000'.

RWY 29R: MALSR. PAPI(P4L)—GA 3.0° TCH 71'. RVR-TMR Thld dsplcd 599'. Rgt tfc.

RWY 11R-29L: H4448X75 (ASPH) S-12.5 PCR 213 F/C/X/T
RWY 11R: Rgt tfc.

RUNWAY DECLARED DISTANCE INFORMATION

RWY 11L:TORA-8474 TODA-9474 ASDA-8604 LDA-8650
RWY 11R:TORA-4448 TODA-4448 ASDA-4448 LDA-4448
RWY 29L:TORA-4448 TODA-4448 ASDA-4448 LDA-3386
RWY 29R:TORA-8856 TODA-9856 ASDA-9210 LDA-8650

SERVICE: S4 FUEL 100, 100LL, JET A OX1, 3 LGT ACTIVATE HIRL
Rwy 11L-29R, PAPI Rwy 11L and Rwy 29R, MALSR Rwy 29R—CTAF. RWY 29R PAPI UNUSBL BYD 9 DEGS right of CNTRLN.

MILITARY— FUEL (NC-100, 100LL, A - Avbl 1300-0500Z†, OT svc chg, C209-468-4722.)

AIRPORT REMARKS: Attended continuously. Fuel and svc 1300-0500Z†, other times call 209-982-1622-svc charge. Seagulls on and invof

arpt especially dur rainy wx. Pavement prior to thld of Rwy 11L not avbl for taxi back ops. Tran parking avbl at FBO. Tran pilots use caution; do not enter the TSA rstd area adj to the tran parking area. CLSD to unsked acr opns with more than 30 psgr seats excp one hr PPR, call AMGR (209) 468-4700 or 4722; after hrs call (209) 468-4722. Rwy 11R-29L not avbl for sked acr opns with more than 9 psgr seats or unsked acr at least 31 psgr seats. Be alert to elevated MALSR AER 29R lctd on blast pad. The following areas not visible fm tower: Twy B FM TRML APN to INT at Twy M; Twy B FM 300 FT W of Twy J to 375 FT E of Twy J; non movement area S of Twy B FM trml aprn to 200 FT W of Twy H; SE half of trml aprn; tsnt prkg aprn. Terminal apron, cargo apron, Twy B, B2, B3, F, D, D7, D9 and H for acft over 12,500 lbs. All other twys rstd to acft less than 12,500 lbs. Twy F rstd to acft wingspan less than 118 ft. Arpt CLOSED to touch and go lds and planned low apchs for turbojet acft 0600-1500Z† exc by PPR from arpt mgr Part 36 Stage 3 acft. Practice circling apchs to Rwys 11L/11R not allowed for any turbine powered/prop driven acft exceeding 12,500 lbs exc PPR from arpt mgr. Avoid overflying San Joaquin General Hospital and the city of Manteca. Ldg fee for acft over 12,500 lbs.

AIRPORT MANAGER: 209-468-4700

WEATHER DATA SOURCES: ASOS (209) 982-4270 LAWRS.

COMMUNICATIONS: CTAF 120.3 ATIS 118.25 209-982-4667 UNICOM 122.95

RCO 122.4 (RANCHO MURIETA RADIO)

Ⓡ NORCAL APP CON 123.85 (SE-NW 7000' and blo) 125.1 (N-SE 7000' and blo) 124.8 (8000' and avb)

TOWER 120.3 (1500-0500Z†) GND CON 121.9

Ⓡ NORCAL DEP CON 125.1

CLEARANCE DELIVERY PHONE: For CD when ATCT clsd ctc NorCal Apch at 916-361-0516.

AIRSPACE: CLASS D svc 1500-0500Z†; other times CLASS E.

RADIO AIDS TO NAVIGATION: NOTAM FILE RIU.

LINDEN (VH) (DH) VOR/DME 114.8 LIN Chan 95 N38°04.47' W121°00.23' 209° 15.5 NM to fld. 266/17E.

DME unusable:

191°-235°

VOR unusable:

228°-232° byd 40 NM

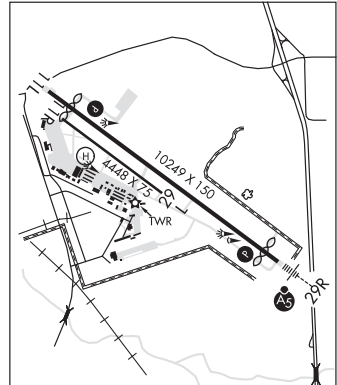
236°-240° byd 40 NM

ILS/DME 109.1 I-SCK Chan 28 Rwy 29R. Class IIE.

• • • • •
HELIPAD H1: H70X70 (CONC) S-45, D-55

HELIPAD H1: ODALS.

HELIPORT REMARKS: Helipad H1 ODALS.



STOVEPIPE WELLS (See DEATH VALLEY NATIONAL PARK on page 143)