

CONTINUED FROM PRECEDING PAGE

RADIO AIDS TO NAVIGATION: NOTAM FILE DEN.

(H) (H) VORW/DME 117.9 DEN Chan 126 N39°48.75' W104°39.64' 341° 3.0 NM to fld. 5452/8E.

VOR unusable:

180°-200° byd 20 NM blo 14,000'

ILS/DME 111.55 I-DZG Chan 52(Y) Rwy 07. Class IE.

ILS/DME 108.9 I-FUI Chan 26 Rwy 08. Class IE.

ILS/DME 111.1 I-LTT Chan 48 Rwy 16L. Class IE.

ILS/DME 111.9 I-DQQ Chan 56 Rwy 16R. Class IT.

ILS/DME 110.15 I-BXP Chan 38(Y) Rwy 17L. Class IE.

ILS/DME 108.5 I-ACX Chan 22 Rwy 17R. Class IE.

ILS/DME 111.55 I-ERP Chan 52(Y) Rwy 25. Class IE.

ILS/DME 108.9 I-JOY Chan 26 Rwy 26. Class IE.

ILS/DME 111.9 I-DXU Chan 56 Rwy 34L. Class IIIE.

ILS/DME 111.1 I-OUF Chan 48 Rwy 34R. Class IIIE.

ILS/DME 108.5 I-AQD Chan 22 Rwy 35L. Class IIIE.

ILS/DME 110.15 I-DPP Chan 38(Y) Rwy 35R. Class IIIE.

ROCKY MOUNTAIN METRO (BJC)(KBJC) 9 NW UTC-7(-6DT) N39°54.53' W105°07.03'

DENVER

5673 B ARFF Index—See Remarks NOTAM FILE BJC

H-3F, 5A, L-10F, A

RWY 12L-30R: H9000X100 (ASPH-GRVD) S-65, D-105, 2S-95,

IAP, AD

2D-150 PCN 31 F/D/W/T HIRL

RWY 12L: REIL. PAPI(P4L)—GA 3.0° TCH 41'. 1.0% down.

RWY 30R: MALSR. PAPI(P4L)—GA 3.0° TCH 52'. Rgt tfc. 1.1% up.

RWY 12R-30L: H7002X75 (ASPH-GRVD) S-47, D-61

PCN 18 F/D/X/T MIRL 1.1% up NW

RWY 12R: REIL. PAPI(P2L)—GA 3.0° TCH 40'. Rgt tfc.

RWY 30L: REIL. PAPI(P2L)—GA 3.0° TCH 41'.

RWY 03-21: H3600X75 (ASPH) S-40, D-45, 2D-65 MIRL

0.4% up S

RWY 03: PAPI(P2L)—GA 3.0° TCH 30'.

RWY 21: PAPI(P2L)—GA 3.0° TCH 40'. Rgt tfc.

RUNWAY DECLARED DISTANCE INFORMATION

RWY 03: TORA-3600 TODA-3600 ASDA-3600 LDA-3600

RWY 12L: TORA-9000 TODA-9000 ASDA-9000 LDA-9000

RWY 12R: TORA-7002 TODA-7002 ASDA-7002 LDA-7002

RWY 21: TORA-3600 TODA-3600 ASDA-3600 LDA-3600

RWY 30L: TORA-7002 TODA-7002 ASDA-7002 LDA-7002

RWY 30R: TORA-9000 TODA-9000 ASDA-9000 LDA-9000

SERVICE: S4 FUEL 100LL, JET A OX 1, 2, 3, 4 LGT When ATCT clsd

ACTVT MALSR Rwy 30R; REIL Rwy 12L, 12R and 30L; PAPI Rwy 03, 12L, 12R, 21, 30L and 30R; MIRL Rwy 03-21 and 12R-30L; HIRL Rwy 12L-30R—CTAF.

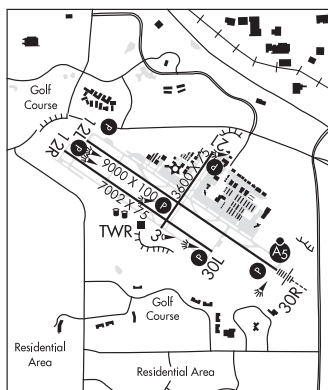
NOISE: Noise abatement proc in efct ctc noise office 303-271-4850.**AIRPORT REMARKS:** Attended continuously. 100LL self svc. Birds and wildlife on and in/ov rwy. Hel arr/dep fm rwy and twys.

Pilots are requested to avoid fit due to nesting eagles: Below 6500 ft MSL, BJC VOR 25 deg radial, 2.7 DME; Over Standley Lake below 8000 ft MSL, BJC VOR 150 deg radial, 3.0 DME. Class II ARFF Index A. 24 hr PPR for unsked acf ops with more than 30 pax seats—720-352-0395. ARFF Index B avbl PPR—720-352-0395. Twy C1 and Twy D mkd with reflectors. N trml ramp slp exceeds rcmdnd std. Flight Notification Service (ADCUS) avbl. NOTE: See Special Notices—Extensive Helicopter Flight Training. See Special Notices—USAF 306 FTG Flight Training Areas, Vicinity of Colorado Springs and Pueblo Colorado. See Special Notices—Arrival Alert.

AIRPORT MANAGER: (303) 271-4851**WEATHER DATA SOURCES:** AWOS-3 (720) 887-8067**COMMUNICATIONS:** CTAF 118.6 ATIS 126.25 303-466-8744

DENVER APP/DEP CON 125.12

METRO TOWER 118.6 (1300-0500Z) GND CON 121.7 CLNC DEL 132.6

AIRSPACE: CLASS D svc 1300-0500Z; other times CLASS G.

CONTINUED ON NEXT PAGE

CONTINUED FROM PRECEDING PAGE

RADIO AIDS TO NAVIGATION: NOTAM FILE BJC.

JEFFCO (VH) (DH) VORW/DME 115.4 BJC Chan 101 N39°54.78' W105°08.34' 093° 1.0 NM to fld. 5737/11E.

VOR unusable:

- 180°-225° byd 40 NM
- 226°-245° byd 36 NM blo 17,000'
- 246°-278° byd 30 NM blo 19,000'
- 279°-300° byd 34 NM blo 18,000'
- 301°-335° byd 40 NM

DME unusable:

- 246°-278° byd 30 NM

ILS 111.7 I-BJC Rwy 30R. Class IA. Unmonitored when ATCT closed.

COMM/NAV/WEATHER REMARKS: Emerg frequency 121.5 not avbl at twr.

DOVE CREEK (8V6) 1 E UTC-7(-6DT) N37°45.89' W108°53.32'

DENVER

6975 TPA-7700(725) NOTAM FILE DEN

RWY 01-19: 4200X50 (DIRT) 1.0% up S

RWY 01: Road.

RWY 19: Road.

AIRPORT REMARKS: Unattended. Arpt CLOSED when snow covered. Vehicle on arpt. Rwy 01-19 soft when wet; -3 ft ditch along both sides; +4 ft bushes various locations 15 ft fm rwy edge. Rwy 01-19 rodent holes throughout. Rwy 01 +4 ft fence 0 ft fm and parallel to thr; +15 ft road 80 ft fm and parallel to thr; +30 ft trees 189 ft fm thr; apch rasion 0:1.

Rwy 19 +12 ft ground 258 ft R of ctrln parallel to extdd ctrln first 500 ft.

AIRPORT MANAGER: 970-677-2282

COMMUNICATIONS: CTAF 122.9

CLEARANCE DELIVERY PHONE: For CD ctc Denver ARTCC at 303-651-4257.

DOVE CREEK N37°48.52' W108°55.88' NOTAM FILE DEN.

DENVER

(VH) (H) VORTACW 114.6 DVC Chan 93 277° 20.8 NM to Monticello. 6990/14E.

H-3D, L-9D

VOR unusable:

- 047°-066° byd 40 NM blo 14,500'
- 047°-066° byd 48 NM blo 18,000'
- 047°-066° byd 54 NM blo 33,000'
- 067°-110° byd 40 NM
- 112°-123° byd 40 NM
- 152°-156° byd 40 NM
- 255°-266° byd 40 NM
- 319°-330° byd 40 NM
- 332°-046° byd 40 NM

RCO 122.5 (DENVER RADIO)

DURANGO

ANIMAS AIR PARK (ØØC) 4 S UTC-7(-6DT) N37°12.19' W107°52.15'

DENVER

6684 NOTAM FILE DEN

H-4K, L-8I, 9E

RWY 01-19: H5010X50 (ASPH) MIRL 1.1% up N

RWY 01: Rgt tfc.

RWY 19: Brush.

SERVICE: S4 FUEL 100LL, JET A OX 1 LGT Actvt MIRL Rwy

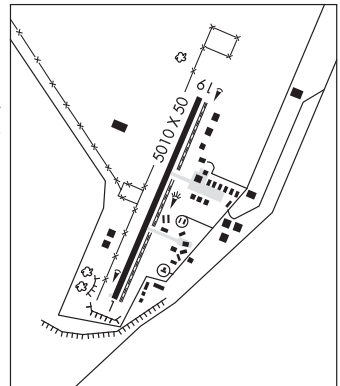
01-19-122.9. Rwy 01-19 thr lgts N end 162 ft fm pavement end.

AIRPORT REMARKS: Attended dalgt hrs. CTN: Hel hosp ops 2.4 NM NE. Rwy 01-19 -1 to -2 ft drainage ditches 35 ft W and 30 ft E alg cntrln; +4 ft fence 87 ft W alg cntrln; +10 ft road 105 ft W alg cntrln. Rwy 01, 200 ft dropoff 120 ft fm and parallel thr; +15 ft trees 1817 ft fm thr 105 ft L of cntrln.

AIRPORT MANAGER: 970-247-4632

COMMUNICATIONS: CTAF/UNICOM 122.8

CLEARANCE DELIVERY PHONE: For CD ctc Denver ARTCC at 303-651-4257.



CONTINUED ON NEXT PAGE