

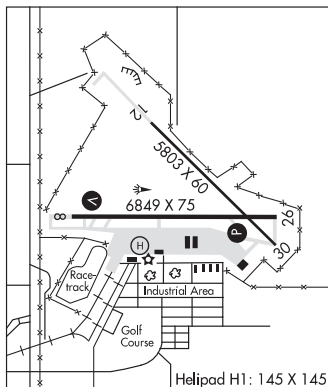
KREMMLING N40°00.16' W106°26.55' NOTAM FILE DEN.
(VH) (DH) VORW/DME 113.8 RLG Chan 85 034° 4.6 NM to Mc Elroy Airfield. 9415/14E.
 DME unusable:
 285°-305° byd 34 NM blo 16,300'
 VOR unusable:
 040°-050° byd 40 NM blo 16,000'
 040°-050° byd 55 NM
 051°-061° byd 40 NM
 062°-072° byd 40 NM blo 15,600'
 062°-072° byd 64 NM
 073°-085° byd 40 NM blo 15,000'
 073°-085° byd 48 NM
 086°-119° byd 40 NM
 120°-130° byd 40 NM blo 16,500'
 120°-130° byd 62 NM
 131°-185° byd 40 NM
 187°-197° byd 40 NM
 217°-221° byd 40 NM
 260°-320° byd 40 NM
 350°-039° byd 40 NM
RCO 122.3 (DENVER RADIO)

CHEYENNE
 H-3E, 5A, L-9E, 11E

LA JUNTA MUNI (LHX)(KLHX) 3 N UTC-7(-6DT) N38°03.00' W103°30.59'

WICHITA
 H-5A, L-10F
 IAP

4229 B NOTAM FILE LHX
RWY 08-26: H6849X75 (ASPH) S-30, D-50, 2D-90 MIRL
 1.1% up W
RWY 08: REIL. VASI(V4L)—GA 3.0° TCH 45'. Road.
RWY 26: REIL. PAPI(P2L)—GA 3.0° TCH 43'.
RWY 12-30: H5803X60 (ASPH-CONC) S-50, D-65, 2D-100
 0.5% up NW
SERVICE: FUEL 100LL, JET A LGT ACTVT MIRL Rwy 08-26, VASI Rwy 08, PAPI Rwy 26 and REIL Rwy 08 & Rwy 26—CTAF.
AIRPORT REMARKS: Attended Mon-Fri 1400-2300Z. Self serve Jet A not avbl. Antelope on and invov arpt. Rwy 12-30 sfc raveling with fod potential. Be alert: intensive USAF student training invov Colorado Springs & Pueblo Colorado. Rwy 12-30 has loose asph mtrl in prim sfc W side of rwy full length. Rwy 12-30 edge undefined. Heavy agricultural ops during summer months. See Special Notices—USAF 306 FTG Flight Training Areas, Vicinity of Colorado Springs and Pueblo Colorado.
AIRPORT MANAGER: (719) 384-2698
WEATHER DATA SOURCES: ASOS 135.525 (719) 384-5961.
COMMUNICATIONS: CTAF/UNICOM 123.0
RCO 122.6 (DENVER RADIO)



(R) DENVER CENTER APP/DEP CON 128.375
CLEARANCE DELIVERY PHONE: For CD ctc Denver ARTCC at 303-651-4257.
RADIO AIDS TO NAVIGATION: NOTAM FILE LAA.
LAMAR (VH) (DH) VORW/DME 116.9 LAA Chan 116 N38°11.83' W102°41.25' 245° 39.9 NM to fld. 3944/12E.
 • • • • •
HELIPAD H1: H145X145 (ASPH)