

**ELY/YELLAND FLD** (ELY)(KELY) 3 NE UTC-8(-7DT) N39°17.98' W114°50.51'

LAS VEGAS

6260 B NOTAM FILE ELY

H-3D, L-9B

**RWY 18-36:** H6017X150 (ASPH-GRVD) S-70, D-85, 2D-130

IAP, AD

HIRL 0.6% up S

**RWY 18:** REIL. PAPI(P4L)—GA 3.0° TCH 50'.**RWY 36:** REIL. PAPI(P4L)—GA 3.0° TCH 50'.**RWY 12-30:** H4825X60 (ASPH) S-15 MIRL 0.4% up SE**RWY 12:** PAPI(P4R)—GA 3.0° TCH 40'.**RWY 30:** Pole.**SERVICE:** FUEL 100LL, JET A OX 3 LGT ACTVT REIL RWY 18 and RWY 36; PAPI RWY 12, RWY 18 and RWY 36; HIRL RWY 18-36; MIRL RWY 12-30—CTAF.**AIRPORT REMARKS:** Attended Mon-Sat 1600-0100Z±. Fuel avbl aft hrs. Ultra-light acft ops on and invof arpt drg dlgt hrs. Rwy 12-30 not avbl for acft over 30 pax seats. Gld ops on and invof arpt May-Sept.**AIRPORT MANAGER:** 775-293-7161**WEATHER DATA SOURCES:** ASOS 120.625 (775) 289-4466.**COMMUNICATIONS:** CTAF/UNICOM 122.8

RCO 122.2 (RENO RADIO)

Ⓡ SALT LAKE CENTER APP/DEP CON 133.45

**CLEARANCE DELIVERY PHONE:** For CD if una to ctc on FSS freq, ctc Salt Lake ARTCC at 801-320-2568.**RADIO AIDS TO NAVIGATION:** NOTAM FILE ELY.

(H) (H) VORW/DME 113.95 ELY Chan 86(Y) N39°17.89' W114°50.90' at fld. 6248/14E.

VOR unusable:

020°-130° byd 16 NM

170°-275° byd 17 NM

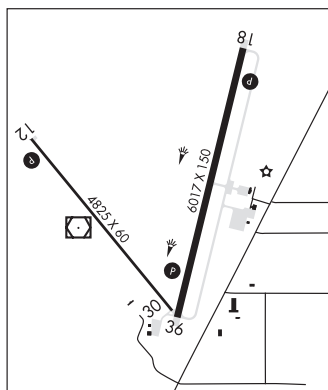
296°-345° byd 20 NM

DME unusable:

010°-130° byd 16 NM

170°-275° byd 17 NM

296°-345° byd 20 NM

**EUREKA** (Ø5U) 6 NW UTC-8(-7DT) N39°36.23' W116°00.22'

LAS VEGAS

5958 B NOTAM FILE RNO

H-3C, L-9B

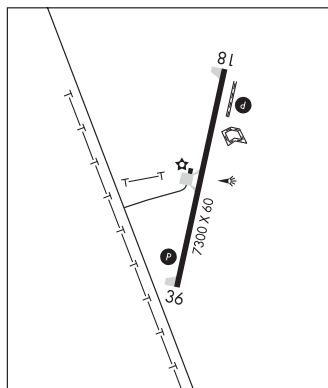
**RWY 18-36:** H7300X60 (ASPH-AFSC) S-30 HIRL 0.3% up S

IAP

**RWY 18:** REIL. PAPI(P2L)—GA 3.0° TCH 45'.**RWY 36:** REIL. PAPI(P2L)—GA 3.0° TCH 40'. P-line.**SERVICE:** FUEL 100LL, JET A, A+ LGT ACTVT REIL Rwy 18 and 36; PAPI Rwy 18 and 36; HIRL Rwy 18-36—CTAF. Dusk-dawn; REIL Rwy 18 and 36; PAPI Rwy 18 and 36; HIRL Rwy 18-36 preset low intst; incr intst—CTAF.**AIRPORT REMARKS:** Attended 1600-0100Z±. Aft hr-775-237-5330. Cold temperature airport. Altitude correction required at or below -17C.**AIRPORT MANAGER:** 775-237-5372**WEATHER DATA SOURCES:** AWOS-3 128.325 (775) 237-6133.**COMMUNICATIONS:** CTAF 122.9

RCO 122.3 (RENO RADIO)

Ⓡ SALT LAKE CENTER APP/DEP CON 132.25

**CLEARANCE DELIVERY PHONE:** For CD if una to ctc on FSS freq, ctc Salt Lake ARTCC at 801-320-2568.

CONTINUED ON NEXT PAGE

## CONTINUED FROM PRECEDING PAGE

RADIO AIDS TO NAVIGATION: NOTAM FILE EKO.

**BULLION (VL) (DH) VORW/DME** 115.85 BQU Chan 105(Y) N40°45.58' W115°45.68' 172° 70.2 NM to fld.  
6466/17E.

VOR unusable:

042°-060° byd 40 NM  
068°-115° byd 40 NM  
088°-110° byd 32 NM  
116°-126° byd 40 NM blo 26,000'  
127°-135° byd 40 NM  
144°-154° byd 40 NM  
187°-225° byd 40 NM  
287°-295° byd 40 NM  
325°-332° byd 40 NM

DME unusable:

079°-100° byd 32 NM  
088°-110° byd 20 NM  
101°-130° byd 20 NM  
111°-130° byd 32 NM

**FALLON MUNI** (FLX)(KFLX) 2 NE UTC-8(-7DT) N39°29.95' W118°44.93'

3966 B TPA-4766(800) NOTAM FILE RNO

**RWY 03-21:** H5705X75 (ASPH) S-17 MIRL

**RWY 03:** PAPI(P2L)—GA 3.0° TCH 40'. Thld dspcd 102'. Road.

**RWY 21:** PAPI(P2L)—GA 3.0° TCH 40'. Trees.

**RWY 13-31:** 3581X60 (DIRT)

**RWY 13:** Trees.

**RWY 31:** Road.

**RUNWAY DECLARED DISTANCE INFORMATION**

**RWY 03:** TORA-5703 TODA-5703

**RWY 21:** TORA-5703 TODA-5703

**SERVICE:** S4 FUEL 100LL, JET A OX 4

**AIRPORT REMARKS:** Attended 1600-0100Z±. Ovhd jet and ultralight act invof arpt. Line of sight btn Rwy 03 and Rwy 13 end blocked; tmt all arr and dep.

**AIRPORT MANAGER:** 775-213-3457

**WEATHER DATA SOURCES:** AWOS-AV 118.25 (775) 423-2201.

**COMMUNICATIONS:** CTAF/UNICOM 122.8

**HAZEN RCO** 122.1R 114.1T (RENO RADIO)

Ⓡ **NAVY FALLON APP/DEP CON** 120.85 (1515-0645Z± Mon-Fri, 1800-0200Z± Sat, 2000-0200Z± Sun, clsd holidays, other times by NOTAM). Other times ctc

Ⓡ **OAKLAND CENTER APP/DEP CON** 128.8 285.5

**CLEARANCE DELIVERY PHONE:** For CD ctc Oakland ARTCC at 510-745-3380.

**RADIO AIDS TO NAVIGATION:** NOTAM FILE RNO.

**HAZEN (L) (L) VORTAC** 114.1 HZN Chan 88 N39°30.98' W118°59.86' 078° 11.6 NM to fld. 4086/17E.

VOR portion unusable:

300°-320° byd 30 NM blo 9,500'

**SAN FRANCISCO**

H-3B, L-9A

IAP, AD

