

**DOUBLE EAGLE II** (AEG)(KAEG) 7 NW UTC-7(-6DT) N35°08.69' W106°47.71'

5837 B NOTAM FILE AEG

ALBUQUERQUE

H-4K, L-8I

IAP, AD

**RWY 04-22:** H7398X100 (ASPH-PFC) S-30 PCN 16 F/C/X/T MIRL

0.4% up SW

**RWY 04:** PAPI(P4L)—GA 3.0° TCH 52'.**RWY 22:** MALSR. Rgt tfc.**RWY 17-35:** H5983X100 (ASPH-PFC) S-30 PCN 11 F/D/X/T MIRL**RWY 17:** REIL. PAPI(P4L)—GA 3.0° TCH 52'.**RWY 35:** REIL. Rgt tfc.**SERVICE:** S4 **FUEL** 100LL, JET A1 **OX 1, 3** **LGT** ACTVT MALSR Rwy 22; REIL Rwy 17 and 35; PAPI Rwy 04 and 17; MIRL Rwy 04-22 and 17-35—CTAF.**AIRPORT REMARKS:** Attended 1300-0100Z±. 100LL avbl 24 hrs self svc with major credit card, \$150 call out fee for JET A1. For attendant after hrs call 505-884-4530. Wildlife on and invof arpt. Live fire range 1.6 NM west of the AER 04. Avoidance advised.**AIRPORT MANAGER:** 505-244-7888**WEATHER DATA SOURCES:** AWOS-3PT (505) 842-2009**COMMUNICATIONS:** CTAF 120.15 ATIS 119.025Ⓡ **ALBUQUERQUE APP/DEP CON** 127.4**TOWER** 120.15 (1300-0500Z±) **GND CON** 121.625**CLNC DEL** 124.8 (when twr clsd)**AIRSPACE:** CLASS D svc 1300-0500Z±; other times CLASS G.**RADIO AIDS TO NAVIGATION:** NOTAM FILE ABQ.**ALBUQUERQUE (VH) (H) VORTACW** 113.2 ABQ Chan 79 N35°02.63' W106°48.98' 357° 6.1 NM to fld. 5749/13E.**TACAN AZIMUTH** unusable:

040°-055° byd 30 NM blo 15,000'

**VOR** unusable:

039°-078° byd 40 NM

111°-133° byd 40 NM blo 14,000'

211°-216° byd 40 NM blo 9,000'

211°-216° byd 52 NM

257°-262° byd 40 NM blo 9,000'

257°-262° NM byd 63 NM

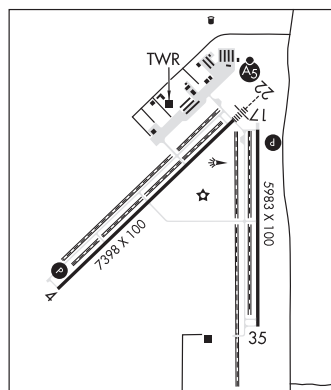
271°-280° byd 40 NM blo 13,300'

271°-280° byd 49 NM

281°-327° byd 40 NM blo 11,000'

281°-327° byd 63 NM

327°-333° byd 40 NM blo 11,500'

**DUDLE NDB (LOMW)** 351 AE N35°13.04' W106°42.77' 212° 5.9 NM to fld. 5455/11E. NOTAM FILE AEG.**ILS** 110.1 I-AEG Rwy 22. Class IT. LOM DUDLE NDB. LOM unmonitored. Unmonitored.**ANDREW OTHOLE MEML** (See ZUNI on page 457)