

HI-TACAN X RWY 34

TACAN Chan 63	DYS	APCH CRS 338°	Rwy ldg 13,500 TDZE 1788 Arprt Elev 1790
-------------------------	-----	-------------------------	---

JAL-2 [USAF]

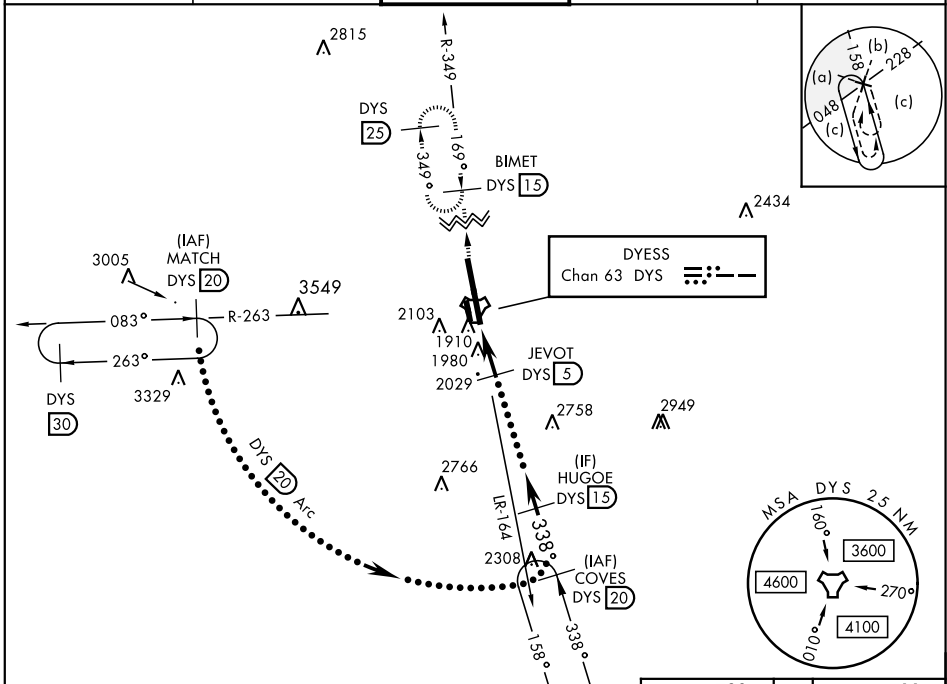
DYESS AFB (KDYS)

* When ALS inop, increase CAT CDE vis to 1 3/8 miles.
 ** Circling to other than Rwy 16 NA.

ALSF-1

MISSED APPROACH: Climb to 4000 via
 DYS TACAN R-349 to BIMET and hold.

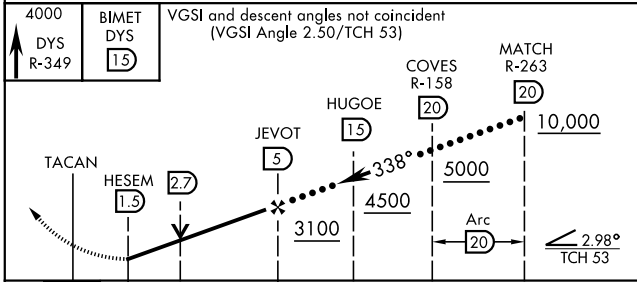
ATIS ★ 269.175	ABILENE APP CON 125.0 338.3 EAST 127.2 282.3 WEST	DYESS TOWER 133.0 257.675	GND CON 118.35 275.8	ASR
--------------------------	---	-------------------------------------	--------------------------------	-----



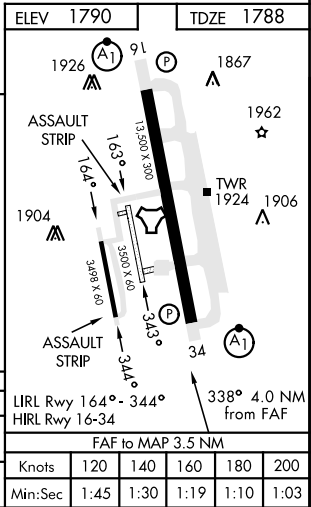
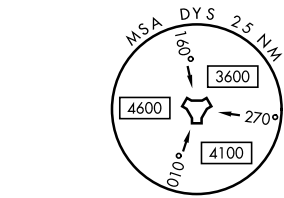
SC-2, 11 JUL 2024 to 08 AUG 2024

SC-2, 11 JUL 2024 to 08 AUG 2024

EMERG SAFE ALT 100 NM 4600



4000 DYS R-349	BIMET DYS 15	VGS1 and descent angles not coincident (VGS1 Angle 2.50/TCH 53)		
TACAN	HESEM 1.5	JEVOT 5	HUGOE 15	COVES R-158 20
				MATCH R-263 20
CATEGORY	C	D	E	
S-34 *	2280/50	492	(500-1)	
CIRCLING **	2460-1 3/4 670 (700-1 3/4)	2460-2 670 (700-2)	2460-2 1/4 670 (700-2 1/4)	



HI-TACAN X RWY 34