

TACAN W RWY 34

TACAN Chan 63	DYS 338°	APCH CRS 338°	Rwy Idg 13,500
		TDZE 1788	Arprt Elev 1790

AL-2 [USAF]

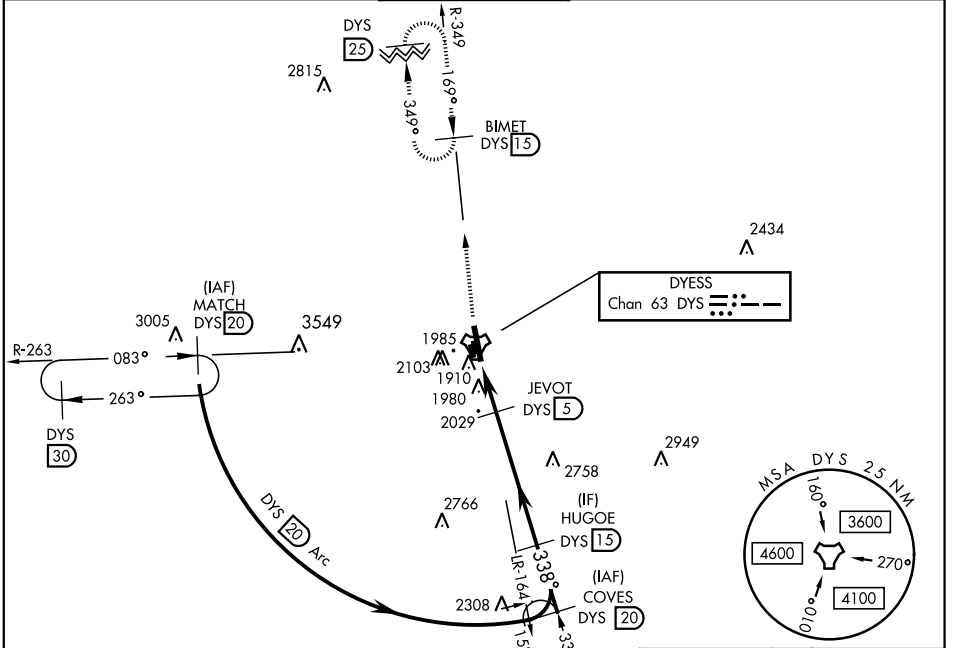
DYESS AFB (KDYS)

* When ALS inop, increase CAT AB RVR to 55 and vis to 1 mile, CAT CDE vis to 1½ miles.
 ** Circling to other than RWY 16 NA



MISSED APPROACH: Climb to 4000 via
 DYS TACAN R-349 to BIMET and hold.

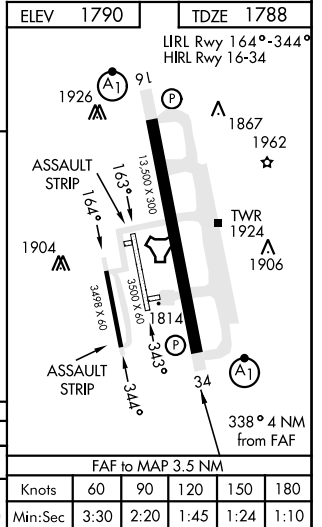
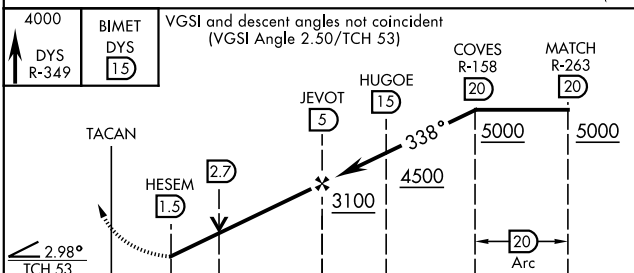
ATIS ★ 269.175	ABILENE APP CON 125.0 338.3 EAST 127.2 282.3 WEST	DYESS TOWER 133.0 257.675	GND CON 118.35 275.8	ASR
--------------------------	---	-------------------------------------	--------------------------------	-----



SC-2, 11 JUL 2024 to 08 AUG 2024

SC-2, 11 JUL 2024 to 08 AUG 2024

EMERG SAFE ALT 100 NM 4600



CATEGORY	A	B	C	D	E
S-34 *	2280/24	492 (500-½)	2280/50	492 (500-1)	
CIRCLING **	2300-1 510 (600-1)	2320-1 530 (600-1)	2460-1½ 670 (700-1¾)	2460-2 670 (700-2)	2460-2½ 670 (700-2½)

TACAN W RWY 34