

ABILENE, TEXAS

VOR/DME RWY 34

VOR/DME TQA 111.6 Chan 53	APCH CRS 340°	Rwy ldg 13,500 TDZE 1788 Arprt Elev 1790
---	-------------------------	---

AL-2 [USAF]

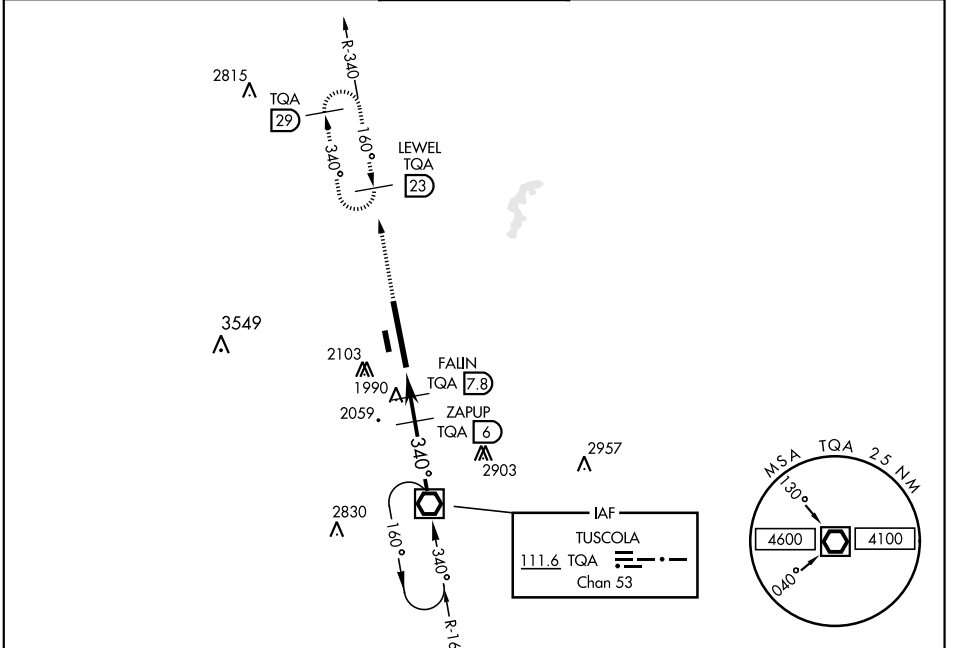
DYESS AFB (KDYS)

* When ALS inop, increase CAT AB RVR to 55 and vis to 1 mile, CAT CDE RVR vis to 1 3/8 miles.
 ** Circling to other than Rwy 16 NA



MISSED APPROACH: Climb to 4000 via TQA VOR/DME R-340 to LEWEL and hold.

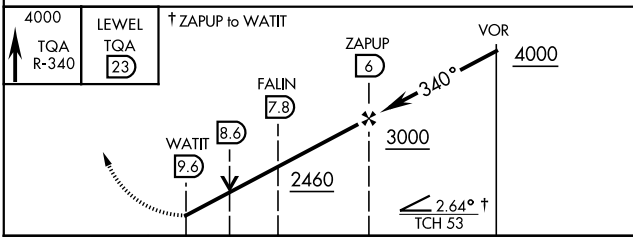
ATIS ★ 269.175	ABILENE APP CON 125.0 338.3 EAST 127.2 282.3 WEST	DYESS TOWER 133.0 257.675	GND CON 118.35 275.8	ASR
--------------------------	---	-------------------------------------	--------------------------------	-----



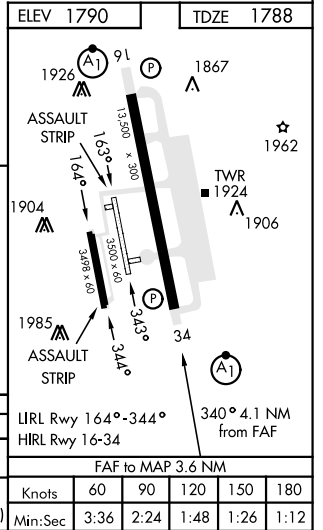
SC-2, 11 JUL 2024 to 08 AUG 2024

SC-2, 11 JUL 2024 to 08 AUG 2024

EMERG SAFE ALT 100 NM 4600



CATEGORY	A	B	C	D	E
S-34 *	2260/24	472 (500-1/2)	2260/50	472 (500-1)	
CIRCLING **	2300-1 510 (600-1)	2320-1 530 (600-1)	2460-1 3/4 670 (700-1 3/4)	2460-2 670 (700-2)	2460-2 1/4 670 (700-2 1/4)



ABILENE, TEXAS

32°25' -99°51'W

DYESS AFB (KDYS)

Amdt 3 10NOV16

VOR/DME RWY 34

ELEV 1790	TDZE 1788
ASSAULT STRIP 13,500 x 300 1,630° 1,640° 3,000 x 60 3,000 x 60 3,000 x 60 3,463° 3,463° 3,463°	
IRL Rwy 164°-344° HIRL Rwy 16-34	
FAF to MAP 3.6 NM	
Knots	60 90 120 150 180
Min:Sec	3:36 2:24 1:48 1:26 1:12