

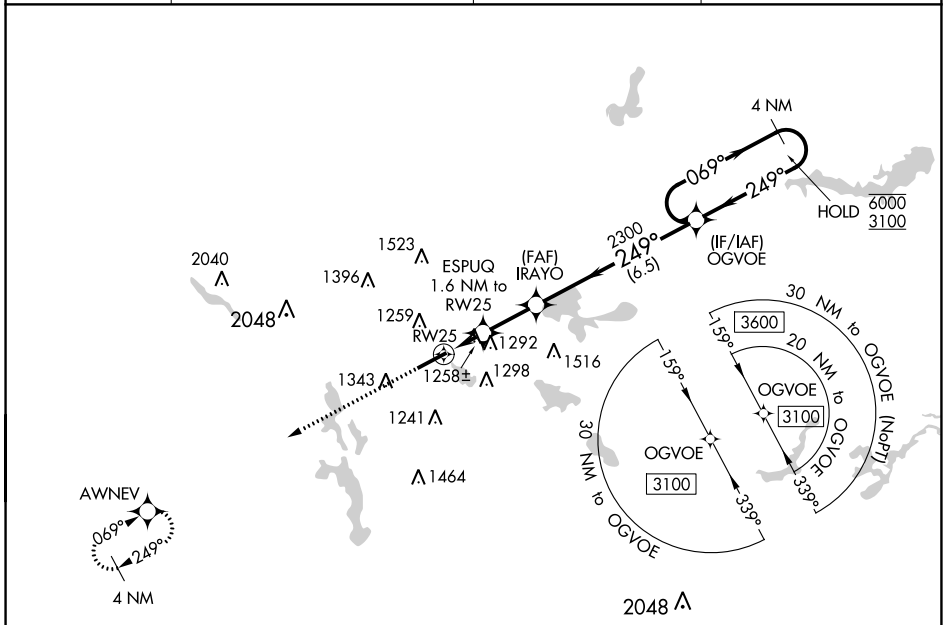
WAAS CH 99735 W25A	APP CRS 249°	Rwy Idg TDZE Apt Elev	6074 1059 1068
--	------------------------	-----------------------------	---

RNAV (GPS) RWY 25

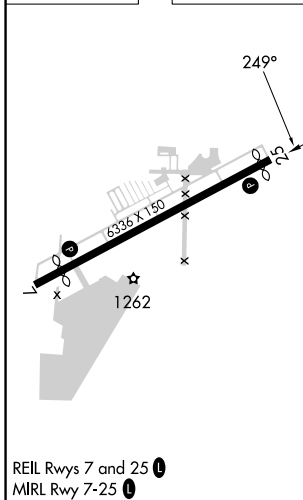
AKRON FULTON INTL (AKR)

RNP APCH.	MISSED APPROACH: Climb to 3100 direct AWNEV and hold.
⚠ ⚠	Rwy 25 helicopter visibility reduction below 1 SM NA. Circling Rwy 7 NA at night.

ASOS 126.825	CLEVELAND APP CON ★ 125.5 371.875	CLNC DEL 121.6	UNICOM 123.075 (CTAF) ⚠
------------------------	---	--------------------------	--



ELEV 1068	TDZE 1059
-----------	-----------



3100	AWNEV	Visual Segment - Obstacles.	4 NM	
↑	☀		OGVOE Holding Pattern	
ESPUQ 1.6 NM to RWY 25	IRAYO		069° → 6000 ← 249° 3100	
RWY 25	2300			
1.6 NM	2.2 NM	6.5 NM		
CATEGORY	A	B	C	D
LP MDA	1520-1	461 (500-1)	1520-1 3/8	461 (500-1 3/8)
LNAV MDA	1560-1	501 (500-1)	1560-1 3/8	501 (500-1 3/8)
C CIRCLING	1600-1 532 (600-1)	1680-1 612 (700-1)	1800-2 732 (800-2)	1840-2 1/2 772 (800-2 1/2)

REIL Rwy 7 and 25 **⚠**
MIRL Rwy 7-25 **⚠**

EC-2, 11 JUL 2024 to 08 AUG 2024

EC-2, 11 JUL 2024 to 08 AUG 2024