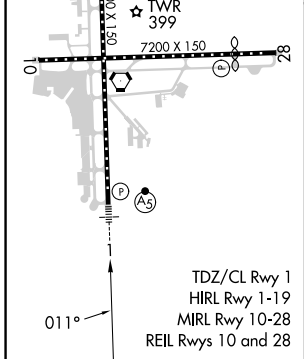
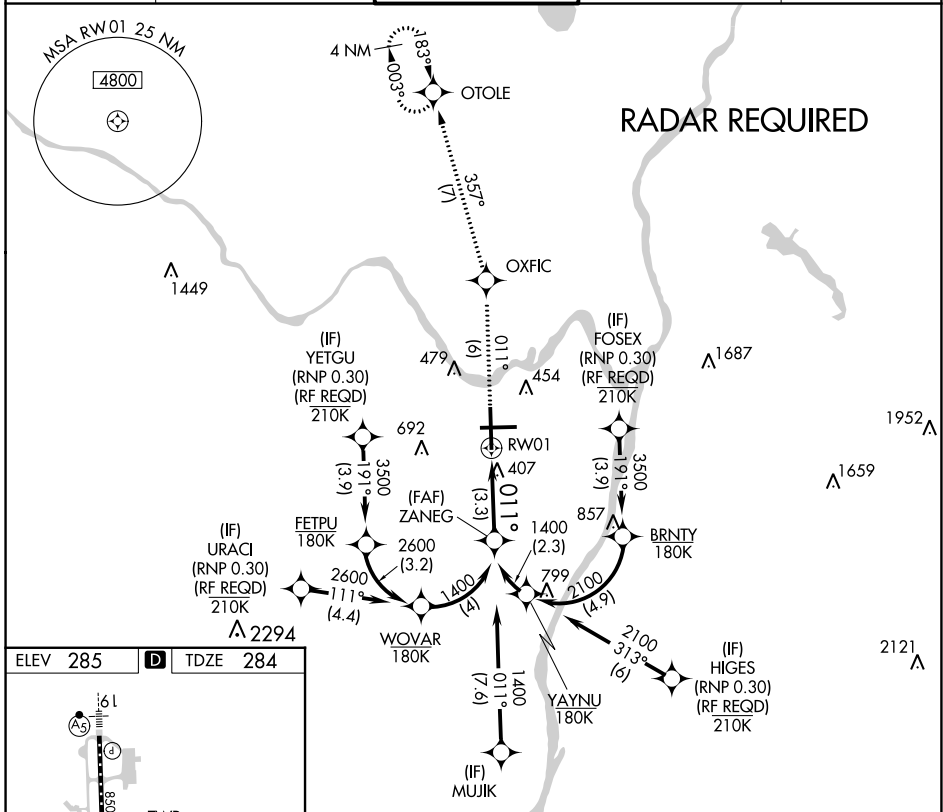


APP CRS <b>011°</b>	Rwy Idg <b>8500</b>	TDZE <b>284</b>
	Apt Elev <b>285</b>	

# RNAV (RNP) Z RWY 1

ALBANY INTL (ALB)

<p><b>▼</b> GPS required. For uncompensated Baro-VNAV systems, procedure NA below -15°C (3°F) or above 47°C (117°F). For inoperative MALSR, increase RNP 0.15 visibility to 1¼ and RNP 0.30 visibility to 1½.</p>		<p>MALSR</p>	<p>MISSED APPROACH: Climb to 3000 on track 011° to OXFIC and on track 357° to OTOLE and hold.</p>	
D-ATIS <b>120.45</b>	ALBANY APP CON <b>132.825 307.2</b>	ALBANY TOWER <b>119.5 257.8</b>	GND CON <b>121.7 348.6</b>	CLNC DEL <b>127.50</b>



3000	OXFIC	OTOLE	ZANEG
↑	tr 011°	tr 357°	1400
<p>See planview for multiple IF locations.</p>			
<p>GP 3.00° TCH 56</p>			

CATEGORY	A	B	C	D
RNP 0.15 DA		656/40	372 (400-¾)	
RNP 0.30 DA		727/50	443 (500-1)	

**AUTHORIZATION REQUIRED**

NE-2, 11 JUL 2024 to 08 AUG 2024

NE-2, 11 JUL 2024 to 08 AUG 2024