



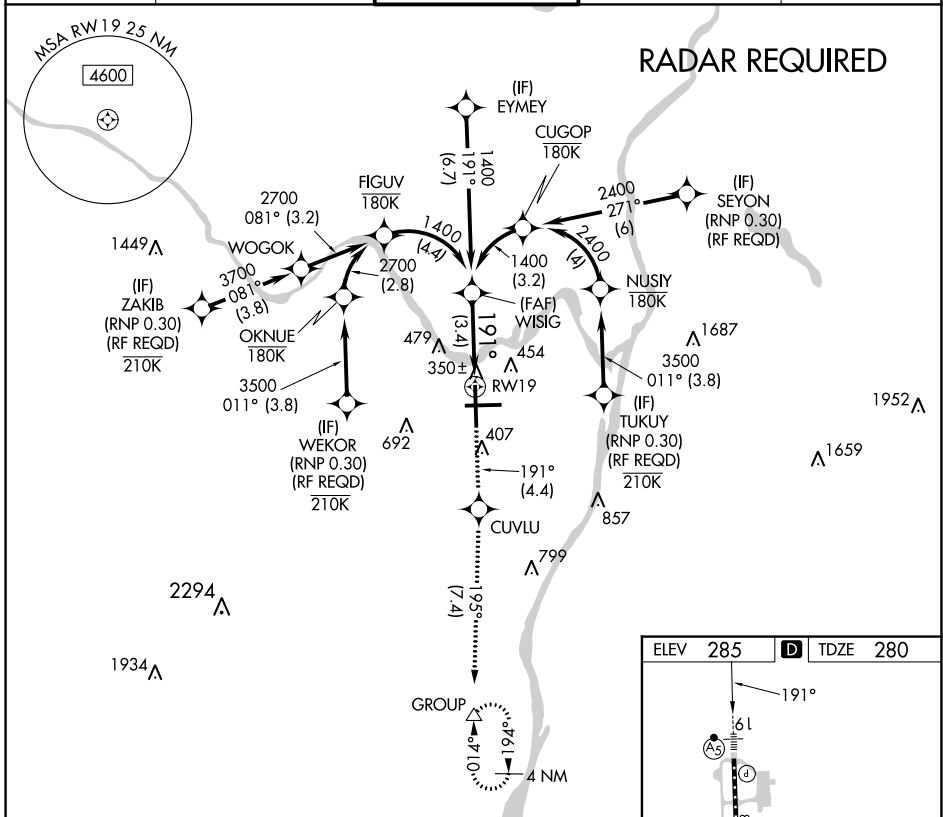
APP CRS	Rwy Idg	<b>8500</b>
<b>191°</b>	TDZE	<b>280</b>
	Apt Elev	<b>285</b>

# RNAV (RNP) Z RWY 19

ALBANY INTL (ALB)

RNP AR APCH.	MALSR 	MISSED APPROACH: Climb to 3000 on track 191° to CUVLU and on track 195° to GROUP and hold.
<p> For uncompensated Baro-VNAV systems, procedure NA below -15°C or above 47°C. For inop ALS increase RNP 0.30 visibility to 1 1/2.</p>		

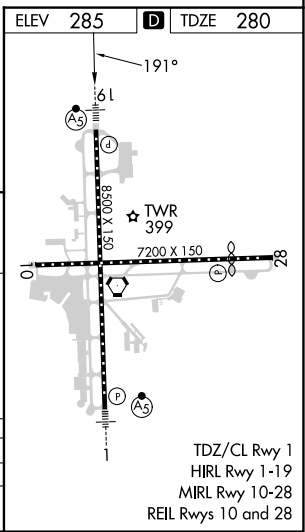
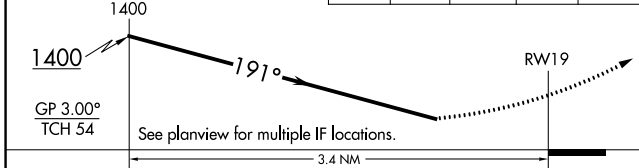
D-ATIS <b>120.45</b>	ALBANY APP CON <b>132.825 307.2</b>	ALBANY TOWER <b>119.5 257.8</b>	GND CON <b>121.7 348.6</b>	CLNC DEL <b>127.50</b>
-------------------------	--	------------------------------------	-------------------------------	---------------------------



NE-2, 11 JUL 2024 to 08 AUG 2024

NE-2, 11 JUL 2024 to 08 AUG 2024

3000	↑	tr 191°	CUVLU	tr 195°	GROUP
------	---	---------	-------	---------	-------



CATEGORY	A	B	C	D
RNP 0.30 DA		763/50	483 (500-1)	

## AUTHORIZATION REQUIRED

TDZ/CL Rwy 1  
HIRL Rwy 1-19  
MIRL Rwy 10-28  
REIL Rwy 10 and 28