

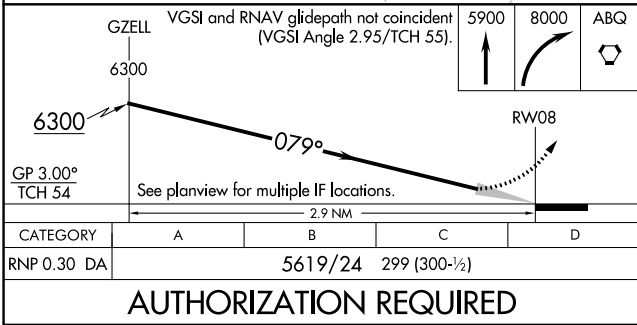
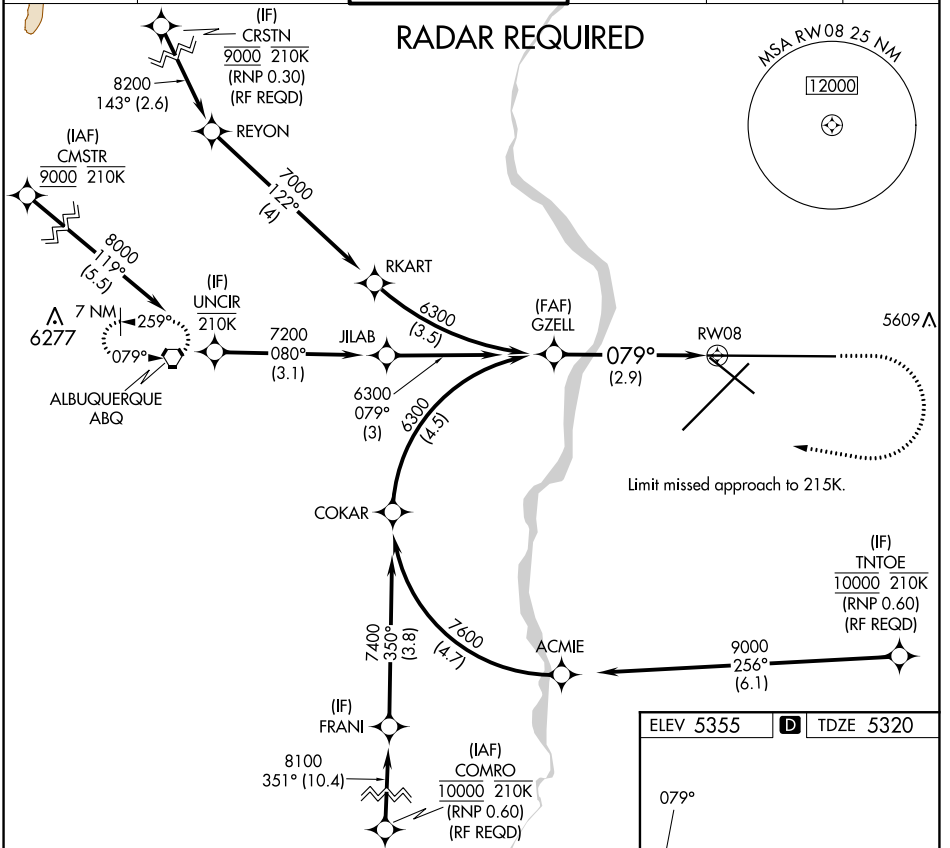
APP CRS 079°	Rwy Idg 12793 TDZE 5320 Apt Elev 5355
------------------------	--

RNAV (RNP) Z RWY 8

ALBUQUERQUE INTL SUNPORT (ABQ)

<p>ASR For uncompensated Baro-VNAV systems, procedure NA below -12°C (11°F) or above 47°C (117°F). For inop MALSR, increase RNP 0.30 all Cats visibility to RVR 4700. GPS required.</p>	<p>MALSR</p>	<p>MISSED APPROACH: Climb to 5900 then climbing right turn to 8000 direct ABQ VORTAC and hold.</p>
--	---------------------	---

D-ATIS 118.0 257.7	ALBUQUERQUE APP CON 123.9 354.1	ALBUQUERQUE TOWER 120.3 351.9	GND CON 121.9 348.6	CLNC DEL 119.2 259.3	CPDLC
------------------------------	---	---	-------------------------------	--------------------------------	-------



ELEV 5355	D TDZE 5320
-----------	--------------------

TWR 5533
13793 X 150
6000 X 150
10000 X 150

MIRL Rwy 12-30
TDZ/CL Rwy 3 and 8
HIRL Rwy 3-21 and 8-26
REIL Rwy 21, 26, and 30

ALBUQUERQUE, NEW MEXICO
Amdt 1A 10DEC15

35°02'N-106°36'W

ALBUQUERQUE INTL SUNPORT (ABQ)
RNAV (RNP) Z RWY 8

SW-1, 11 JUL 2024 to 08 AUG 2024

SW-1, 11 JUL 2024 to 08 AUG 2024