

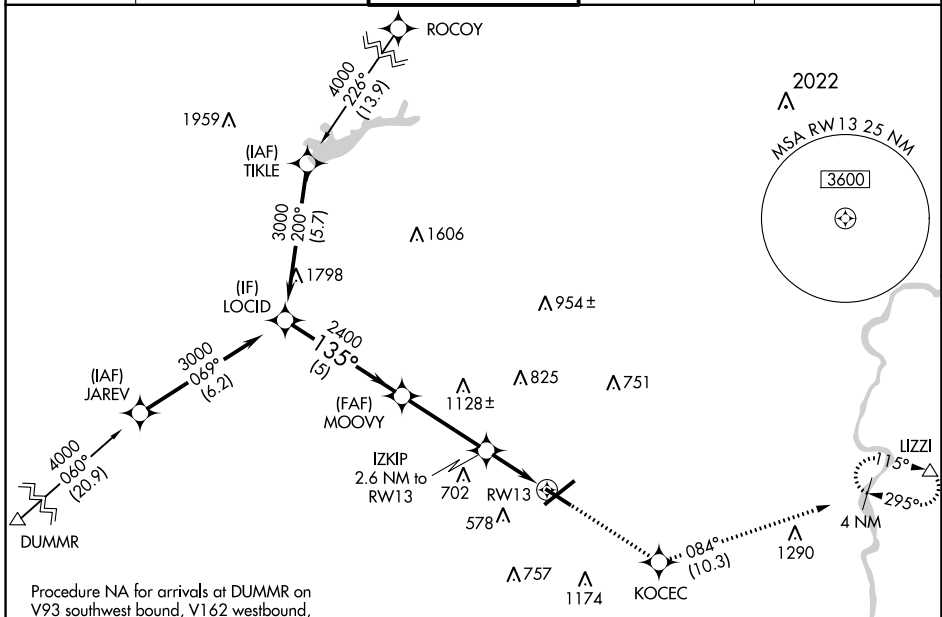
WAAS CH 82532 W13A	APP CRS 135°	Rwy Idg TDZE 386 Apt Elev 394	5800
--	------------------------	---	-------------

RNAV (GPS) RWY 13

LEHIGH VALLEY INTL (ABE)

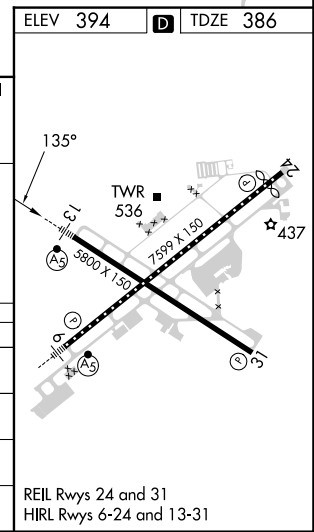
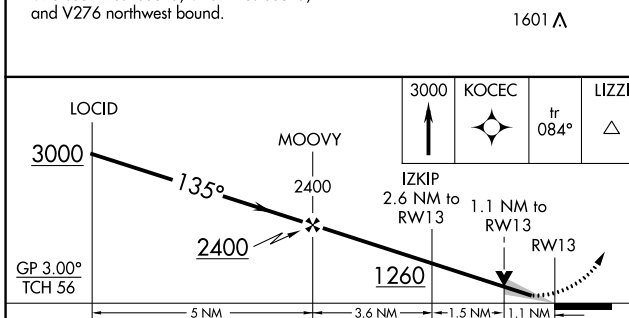
RNP APCH - GPS.			MALSR 	MISSED APPROACH: Climb to 3000 direct KOCEC and on track 084° to LIZZI and hold.
 For uncompensated Baro-VNAV systems, LNAV/VNAV NA below -16°C or above 54°C. For inop ALS, increase LNAV Cat C/D visibility to 1 1/8 SM.				

ATIS 126.975	ALLENTOWN APP CON 119.65 124.45 351.8	ALLENTOWN TOWER 120.5 257.95	GND CON 121.9 257.95	CLNC DEL 124.05 257.95
------------------------	---	--	--------------------------------	----------------------------------



NE-4, 11 JUL 2024 to 08 AUG 2024

NE-4, 11 JUL 2024 to 08 AUG 2024



CATEGORY	A	B	C	D
LPV DA		586-1/2	200 (200-1/2)	
LNAV/VNAV DA		700-1/2	314 (400-1/2)	
LNAV MDA	800-1/2	414 (500-1/2)	800-3/4	414 (500-3/4)
CIRCLING	900-1	506 (600-1)	1180-2 1/4 786 (800-2 1/4)	1600-3 1206 (1300-3)