

WAAS CH <b>82499</b> <b>W31A</b>	APP CRS <b>315°</b>	Rwy Idg TDZE <b>383</b> Apt Elev <b>394</b>
--	------------------------	---

# RNAV (GPS) RWY 31

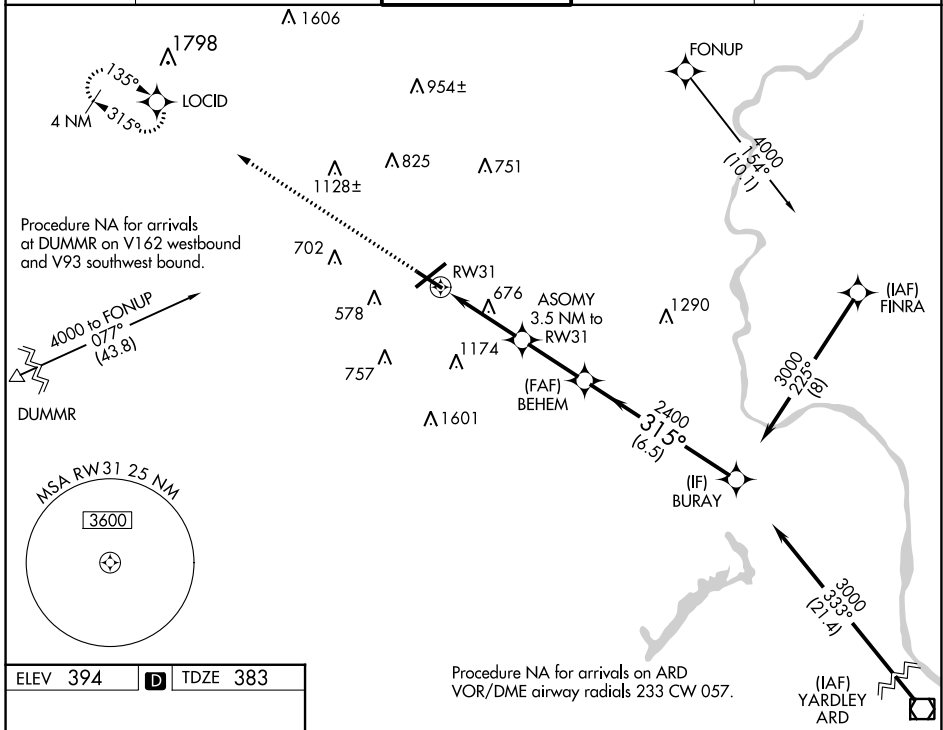
LEHIGH VALLEY INTL (ABE)

RNP APCH - GPS

▼ For uncompensated Baro-VNAV systems, LNAV/VNAV NA below -8°C or above 54°C. Rwy 31 helicopter visibility reduction below 3/4 SM NA.

MISSED APPROACH: Climb to 3000 direct LOCID and hold.

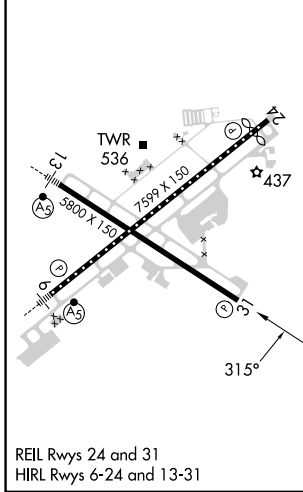
ATIS <b>126.975</b>	ALLENTOWN APP CON <b>119.65 124.45 351.8</b>	ALLENTOWN TOWER <b>120.5 257.95</b>	GND CON <b>121.9 257.95</b>	CLNC DEL <b>124.05 257.95</b>
------------------------	---	--	--------------------------------	----------------------------------



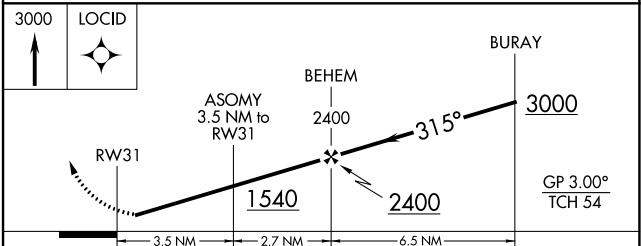
NE-4, 11 JUL 2024 to 08 AUG 2024

NE-4, 11 JUL 2024 to 08 AUG 2024

ELEV <b>394</b>	<b>D</b>	TDZE <b>383</b>
-----------------	----------	-----------------



REIL Rws 24 and 31  
HIRL Rws 6-24 and 13-31



CATEGORY	A	B	C	D
LPV DA		633-3/4	250 (300-3/4)	
LNAV/VNAV DA		758-1 1/4	375 (400-1 1/4)	
LNAV MDA	940-1	557 (600-1)	940-1 5/8	557 (600-1 1/4)
<b>C</b> CIRCLING	940-1	546 (600-1)	1180-2 1/4 786 (800-2 1/4)	1600-3 1206 (1300-3)