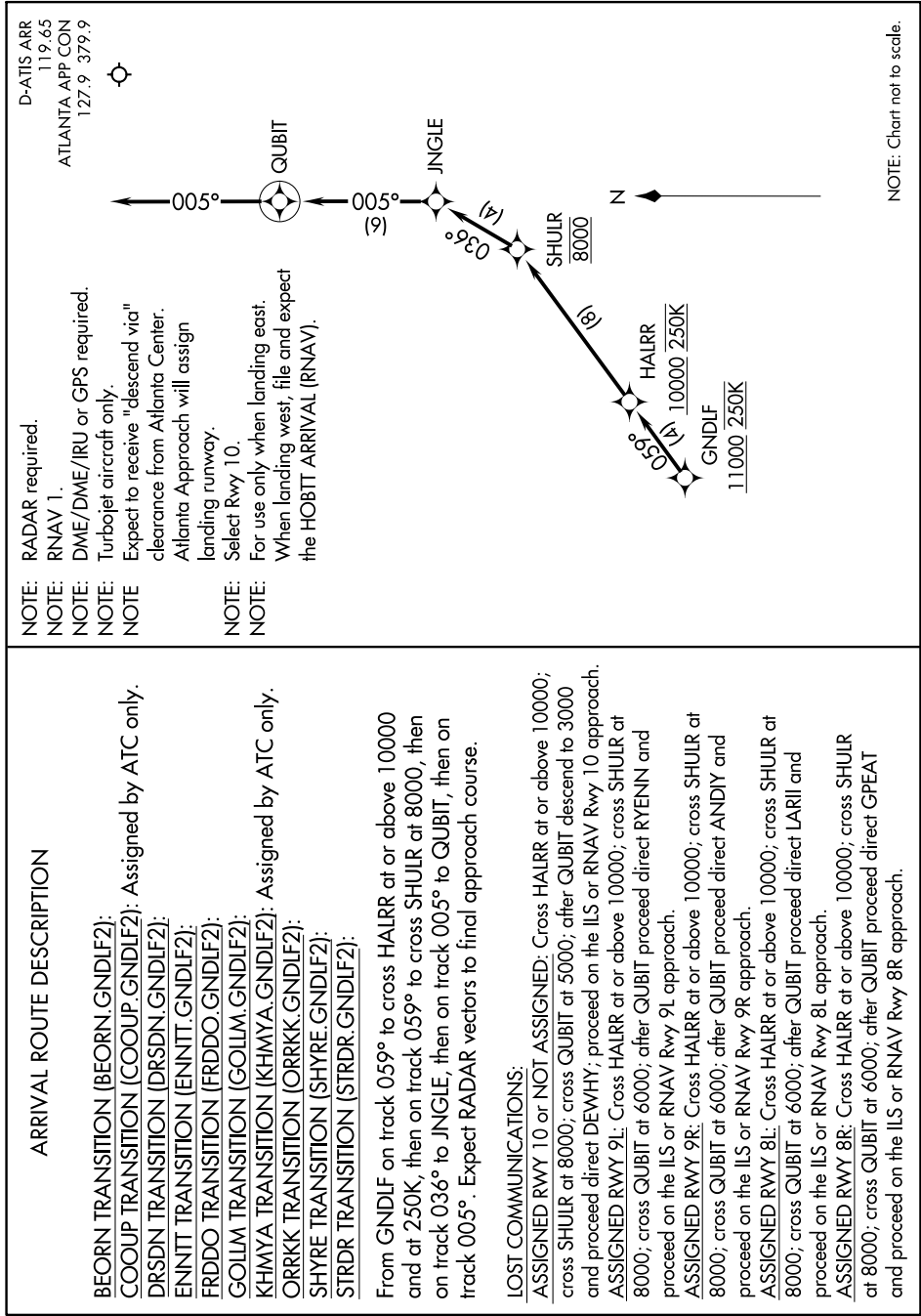


GNDLF TWO ARRIVAL(RNAV) Arrival Routes

SE-4, 11 JUL 2024 to 08 AUG 2024



NOTE: Chart not to scale.

ARRIVAL ROUTE DESCRIPTION

- BEORN TRANSITION (BEORN.GNDLF2):
- COOUP TRANSITION (COOUP.GNDLF2): Assigned by ATC only.
- DRSDN TRANSITION (DRSDN.GNDLF2):
- ENNTT TRANSITION (ENNTT.GNDLF2):
- FRDDO TRANSITION (FRDDO.GNDLF2):
- GOLLM TRANSITION (GOLLM.GNDLF2):
- KHMYA TRANSITION (KHMYA.GNDLF2): Assigned by ATC only.
- ORRKK TRANSITION (ORRKK.GNDLF2):
- SHYRE TRANSITION (SHYRE.GNDLF2):
- STRDR TRANSITION (STRDR.GNDLF2):

From GNDLF on track 059° to cross HALRR at or above 10000 and at 250K, then on track 059° to cross SHULR at 8000, then on track 036° to JNGLE, then on track 005° to QUBIT, then on track 005°. Expect RADAR vectors to find approach course.

LOST COMMUNICATIONS:

- ASSIGNED RWY 10 or NOT ASSIGNED: Cross HALRR at or above 10000; cross SHULR at 8000; cross QUBIT at 5000; after QUBIT descend to 3000 and proceed direct DEWHY; proceed on the ILS or RNAV Rwy 10 approach.
- ASSIGNED RWY 9L: Cross HALRR at or above 10000; cross SHULR at 8000; cross QUBIT at 6000; after QUBIT proceed direct RYENN and proceed on the ILS or RNAV Rwy 9L approach.
- ASSIGNED RWY 9R: Cross HALRR at or above 10000; cross SHULR at 8000; cross QUBIT at 6000; after QUBIT proceed direct ANDYI and proceed on the ILS or RNAV Rwy 9R approach.
- ASSIGNED RWY 8L: Cross HALRR at or above 10000; cross SHULR at 8000; cross QUBIT at 6000; after QUBIT proceed direct LARIL and proceed on the ILS or RNAV Rwy 8L approach.
- ASSIGNED RWY 8R: Cross HALRR at or above 10000; cross SHULR at 8000; cross QUBIT at 6000; after QUBIT proceed direct GPEAT and proceed on the ILS or RNAV Rwy 8R approach.

SE-4, 11 JUL 2024 to 08 AUG 2024