

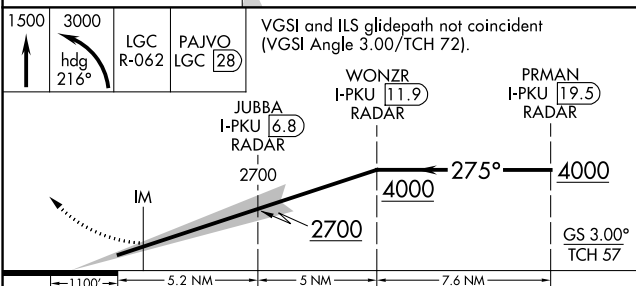
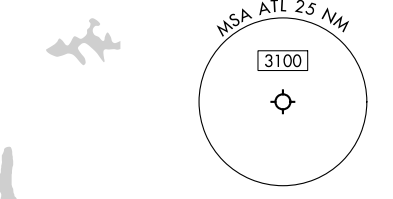
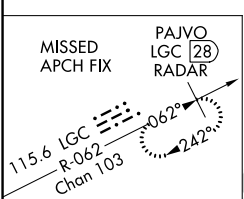
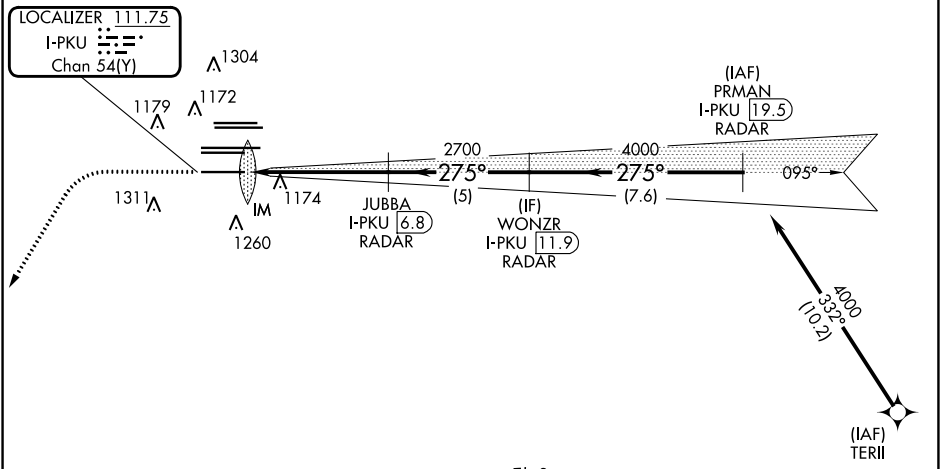
LOC/DME I-PKU 111.75 Chan 54(Y)	APP CRS 275°	Rwy ldg TDZE 998 Apt Elev 1026
---	------------------------	--

ILS RWY 28 (CAT II)

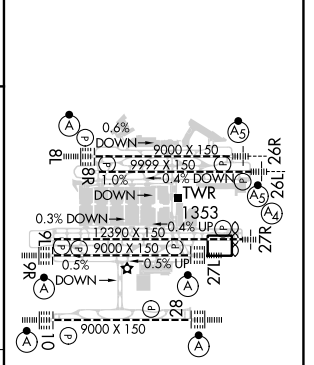
HARTSFIELD-JACKSON ATLANTA INTL (ATL)

RNAV 1-GPS or RADAR required for procedure entry. From TERII: RNAV 1-GPS required. DME or RADAR required.	ALSF-2 	MISSED APPROACH: Climb to 1500 then climbing left turn to 3000 on heading 216° and LGC VORTAC R-062 to PAJVO/LGC 28 DME/RADAR and hold.
Simultaneous approach authorized.		

D-ATIS ARR 119.65	ATLANTA APP CON	ATLANTA TOWER				ALL RWYS	GND CON	ALL RWYS
DEP 125.55	127.9 379.9	8L-26R	8R-26L	9L-27R	9R-27L	10-28	(8L-26R,8R-26L) (9L-27R,9R-27L)	10-28
		119.1	125.325	123.85	119.3	119.5	121.9	121.75
							121.65	121.65 254.4



ELEV 1026	D	TDZE 998
-----------	----------	----------



CATEGORY	A	B	C	D
S-ILS 28	RA 188/12		100 DA 1098	
CATEGORY II ILS - SPECIAL AIRCREW & AIRCRAFT CERTIFICATION REQUIRED				

HIRL all Rwys
TDZ/CL Rwys 8L, 9R,
10, 26R, 27L and 28

SE-4, 11 JUL 2024 to 08 AUG 2024

SE-4, 11 JUL 2024 to 08 AUG 2024