

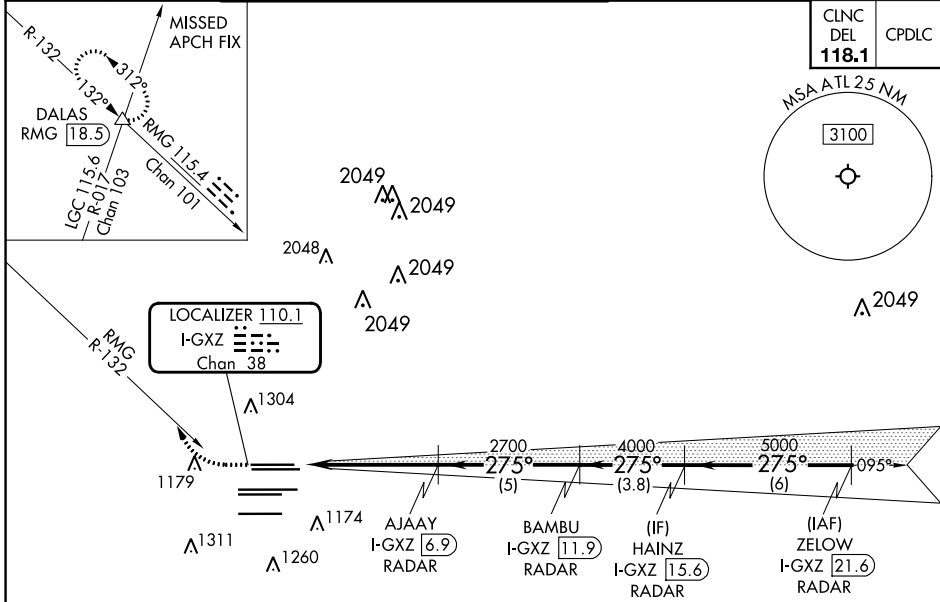
LOC/DME I-GXZ 110.1 Chan 38	APP CRS 275°	Rwy Idg TDZE Apt Elev	26R 8500 990 1026	26L 9999 996 1026
---	------------------------	-----------------------------	---	---

ILS or LOC RWY 26R

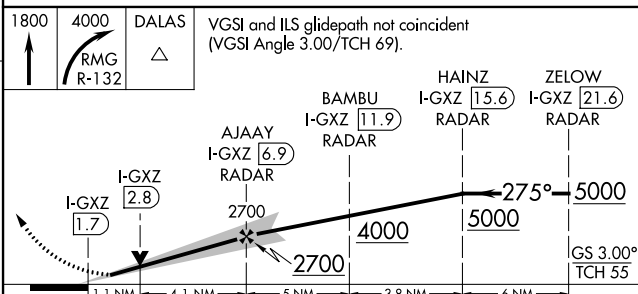
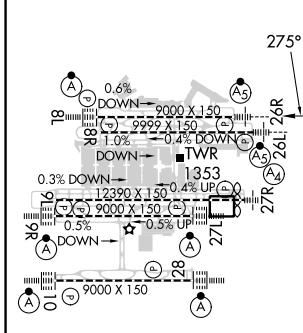
HARTSFIELD-JACKSON ATLANTA INTL (ATL)

RADAR required.		Rwy 26R MALSR	Rwy 26L MALSR	MISSED APPROACH: Climb to 1800 then climbing right turn to 4000 on RMG VORTAC R-132 to DALAS INT/RMG 18.5 DME and hold.
▼ Simultaneous approach authorized. For inop ALS, increase sidestep Rwy 26L Cats A and B visibility ¼ SM.				

D-ATIS ARR 119.65	ATLANTA APP CON DEP 127.9 379.9	ATLANTA TOWER 8L-26R 8R-26L 9L-27R 9R-27L 10-28 RWYS				ALL RWYS (8L-26R, 8R-26L) (9L-27R, 9R-27L) 10-28 RWYS	GND CON DEP 121.9	ALL RWYS 10-28 RWYS DEP 121.75 121.65 254.4
-----------------------------	--	---	--	--	--	---	-----------------------------	---



ELEV 1026	D TDZE 26R 990 TDZE 26L 996
-----------	---------------------------------------



HIRL all Rwy's TDZ/CL Rwy's 8L, 9R, 10, 26R, 27L and 28				
FAF to MAP 5.2 NM				
Knots	60	90	120	150
Min:Sec	5:12	3:28	2:36	2:05
				1:44
CATEGORY	A	B	C	D
S-ILS 26R		1190/18	200 (200-½)	
S-LOC 26R	1420/24	430 (400-½)	1420/40	430 (400-¾)
SIDESTEP 26L	1420/55	424 (400-1)	1420-1¼ 424 (400-1¼)	1420-1¾ 424 (400-1¾)

SE-4, 11 JUL 2024 to 08 AUG 2024

SE-4, 11 JUL 2024 to 08 AUG 2024