

ATLANTA, GEORGIA

AL-26 (FAA)

24165  
ILS PRM RWY 28 (CAT II)

(CLOSE PARALLEL)

HARTSFIELD-JACKSON ATLANTA INTL (ATL)

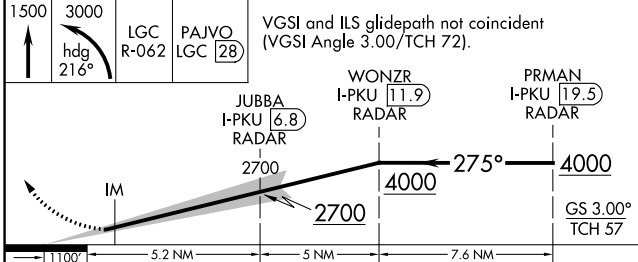
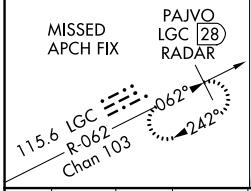
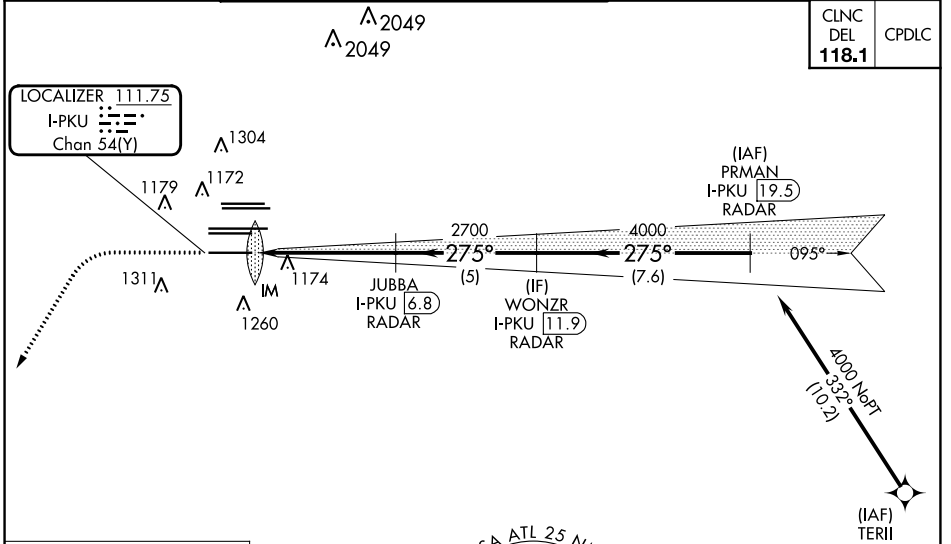
LOC/DME I-PKU <b>111.75</b> Chan <b>54(Y)</b>	APP CRS <b>275°</b>	Rwy ldg <b>9000</b> TDZE <b>998</b> Apt Elev <b>1026</b>
---	------------------------	---

RNAV 1-GPS or RADAR required for procedure entry.  
From TERII: RNAV 1-GPS required. DME or RADAR required.

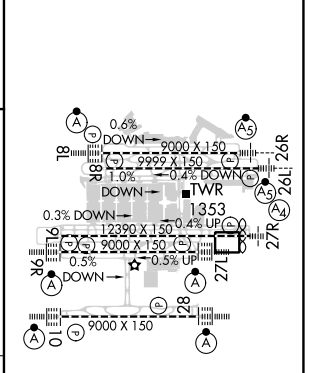
ALSIF-2 	MISSED APPROACH: Climb to 1500 then climbing left turn to 3000 on heading 216° and LGC VORTAC R-062 to PAJVO/LGC 28 DME/RADAR and hold.
-------------	---

Simultaneous approach authorized. Use of FD or AP required during simultaneous operations. Dual VHF comm required. See additional requirements on AAUP.

D-ATIS ARR <b>119.65</b> DEP <b>125.55</b>	ATLANTA APP CON <b>127.9 379.9</b>	ATLANTA TOWER 8L-26R 8R-26L 9L-27R 9R-27L 10-28 RWYS <b>119.1 125.325 123.85 119.3 119.5 254.4</b> PRM <b>133.425</b>	ALL RWYS (8L-26R,8R-26L) (9L-27R,9R-27L) 10-28 <b>121.9 121.75 121.65 254.4</b>	GND CON <b>121.9 121.75 121.65 254.4</b>
--	---------------------------------------	--	---	---



ELEV 1026	<b>D</b>	TDZE 998
-----------	----------	----------



CATEGORY	A	B	C	D
S-ILS 28	RA 188/12		100 DA 1098	
<b>CATEGORY II ILS - SPECIAL AIRCREW &amp; AIRCRAFT CERTIFICATION REQUIRED</b>				

HIRL all Rwys  
TDZ/CL Rwwys 8L, 9R,  
10, 26R, 27L and 28

ATLANTA, GEORGIA  
Amdt 5 07OCT21

33°38'N-84°26'W

HARTSFIELD-JACKSON ATLANTA INTL (ATL)  
ILS PRM RWY 28 (CAT II) (CLOSE PARALLEL)

SE-4, 11 JUL 2024 to 08 AUG 2024

SE-4, 11 JUL 2024 to 08 AUG 2024