

WAAS CH 97400 W09B	APP CRS 095°	Rwy Idg TDZE 1026 Apt Elev 1026	9000
--	------------------------	---	-------------

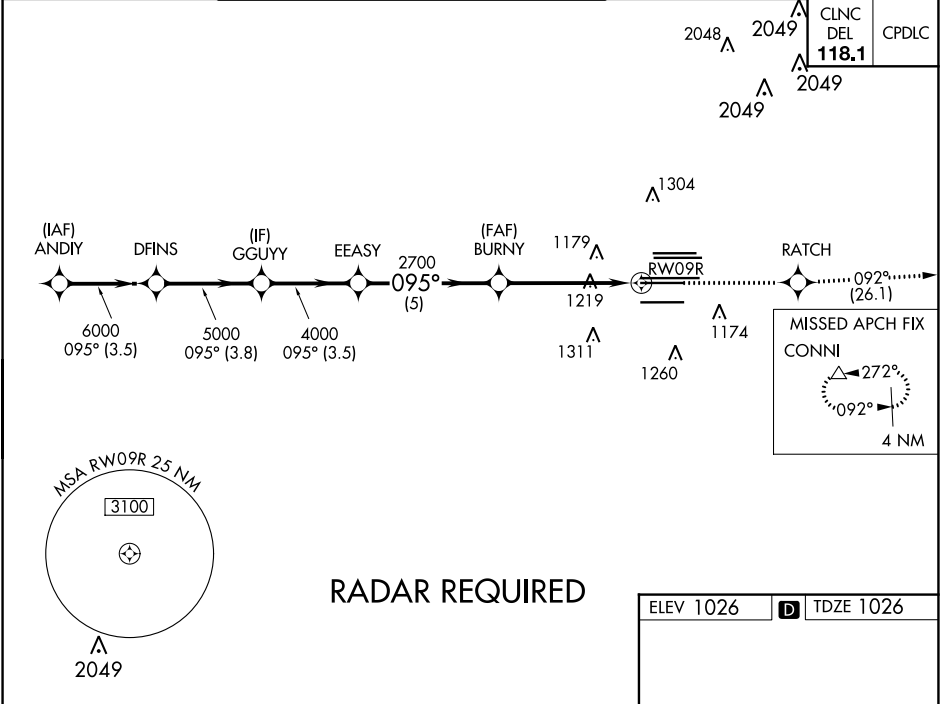
RNAV (GPS) RWY 9R

HARTSFIELD-JACKSON ATLANTA INTL (ATL)

For uncompensated Baro-VNAV systems, LNAV/VNAV NA below -7°C (20°F) or above 54°C (130°F). DME/DME RNP-0.3 NA. Simultaneous approach authorized with Rwy 8L or 8R. LNAV procedure NA during simultaneous operations. Use of FD or AP providing RNAV track guidance required during simultaneous operations.

ALSF-2
MISSED APPROACH: Climb to 4000 direct RATCH and on track 092° to CONNI and hold.

D-ATIS ARR 119.65	ATLANTA APP CON	ATLANTA TOWER					ALL RWYS	GND CON	ALL RWYS
DEP 125.55	127.9 379.9	119.1	125.325	123.85	119.3	119.5	254.4	121.9	121.75 121.65 254.4



SE-4, 11 JUL 2024 to 08 AUG 2024

SE-4, 11 JUL 2024 to 08 AUG 2024

VGSIs and RNAV glidepath not coincident (VGSi Angle 3.00/TCH 70).		4000	RATCH	tr 092°	CONNI
ANDIY	DFINS	GGUYY	EEASY	BURNY	RATCH
7000	6000	5000	4000	2700	2700
GP 3.00° TCH 56					
	3.5 NM	3.8 NM	3.5 NM	5 NM	3.9 NM
CATEGORY	A	B	C	D	
LPV DA		1226/18	200 (200-½)		
LNAV/VNAV DA		1403/40	377 (500-¾)		
LNAV MDA	1480/24	454 (500-½)	1480/45	454 (500-⅞)	

