
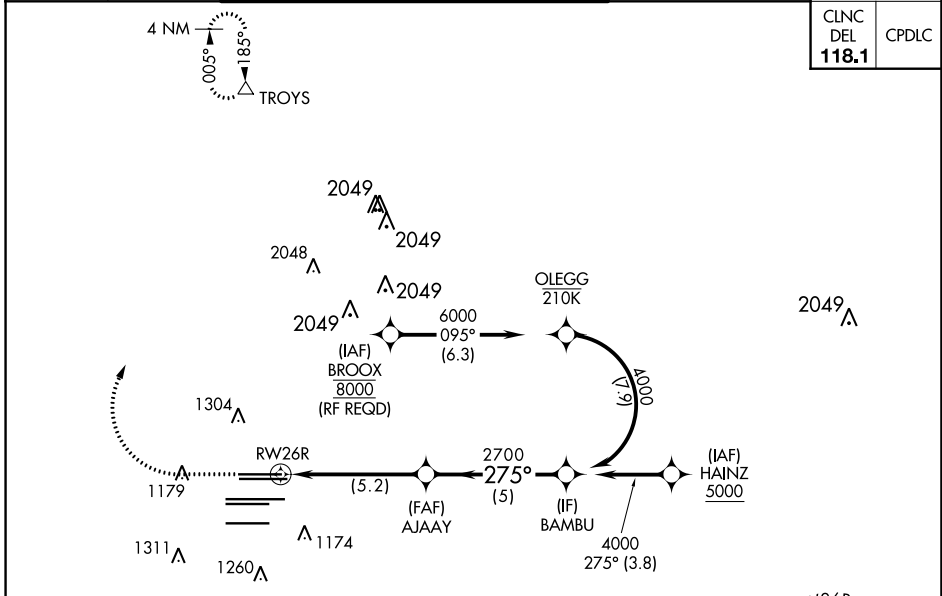


APP CRS	Rwy ldg	8500
275°	TDZE	990
	Apt Elev	1026

RNAV (RNP) Z RWY 26R
HARTSFIELD-JACKSON ATLANTA INTL (ATL)

<p>For uncompensated Baro-VNAV systems, procedure NA below -8°C (18°F) or above 54°C (130°F). GPS required. Simultaneous approach authorized. Arrival from BROOX NA during simultaneous triple approaches.</p>					<p>MALSR</p> 		<p>MISSED APPROACH: Climb to 1500 then climbing right turn to 3500 direct TROYS and hold.</p>		
D-ATIS	ATLANTA APP CON	ATLANTA TOWER				ALL RWYS	GND CON		ALL RWYS
ARR 119.65	127.9 379.9	8L-26R	8R-26L	9L-27R	9R-27L	10-28	8L-26R, 8R-26L	9L-27R, 9R-27L	10-28
DEP 125.55	127.9 379.9	119.1	125.325	123.85	119.3	119.5	121.9	121.75	121.65 254.4



SE-4, 11 JUL 2024 to 08 AUG 2024

SE-4, 11 JUL 2024 to 08 AUG 2024

ELEV 1026	D	TDZE 990
-----------	----------	----------

275°

1500

3500

TROYS

VGSI and RNAV glidepath not coincident (VGSI Angle 3.00/TCH 69).

BAMBUB

4000

AJAAY

2700

275°

2700

RW26R

5.2 NM

5 NM

GP 3.00° TCH 55

CATEGORY	A	B	C	D
RNP 0.30 DA	1402/45		412 (400-1)	

AUTHORIZATION REQUIRED

HIRL all Rwys
 TDZ/ CL Rwys 8L, 9R, 10, 26R, 27L and 28