

VORTAC CEC 109.0 Chan 27	APP CRS 346°	Rwy Idg 4850 TDZE 59 Apt Elev 61
---------------------------------------	------------------------	---

VOR/DME RWY 36

JACK MC NAMARA FLD (CEC)

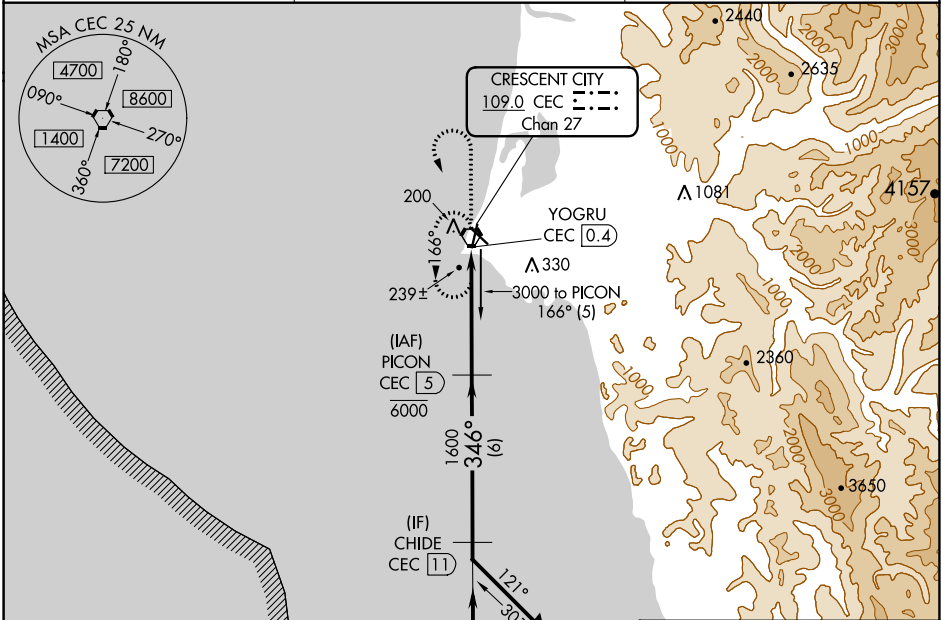
⚠ When local altimeter setting not received, use Brookings altimeter setting and increase all MDA 100 feet; increase S-36 Cat C/D and Circling Cat D visibilities ¼ mile and Circling Cat C visibility ½ mile. Helicopter visibility reduction below 1 SM NA.
Night landing: Rwy 36 operational VGSI required, remain on or above VGSI glidepath until threshold. Night landing: Rwy 18, 30 NA.

MISSED APPROACH: Climb to 1000 then climbing left turn to 3000 direct CEC VORTAC and hold, continue climb-in-hold to 3000.

ASOS
119.925

SEATTLE CENTER
124.85 306.3

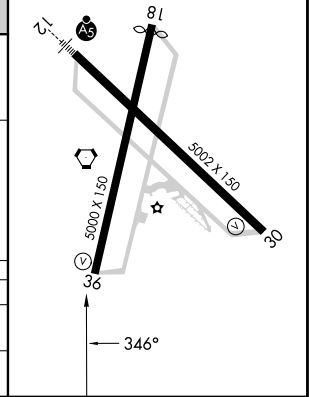
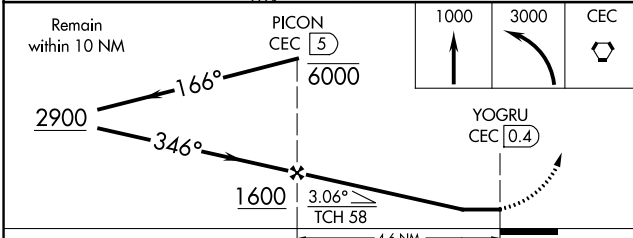
UNICOM
122.8 (CTAF) 0



SW-2, 11 JUL 2024 to 08 AUG 2024

SW-2, 11 JUL 2024 to 08 AUG 2024

ELEV 61	D	TDZE 59
HIRL Rwy 12-30 0		
REIL Rws 18, 30 and 36 0		
MIRL Rwy 18-36 0		



CATEGORY	A	B	C	D
S-36	500-1	441 (500-1)	500-1 ³ / ₈	441 (500-1 ³ / ₈)
C CIRCLING	540-1	479 (500-1)	640-1 ¹ / ₂ 579 (600-1 ¹ / ₂)	640-2 579 (600-2)