

WAAS CH 78418 W12A	APP CRS 121°	Rwy Idg 10848 TDZE 510 Apt Elev 510
--	------------------------	--

RNAV (GPS) RWY 12L

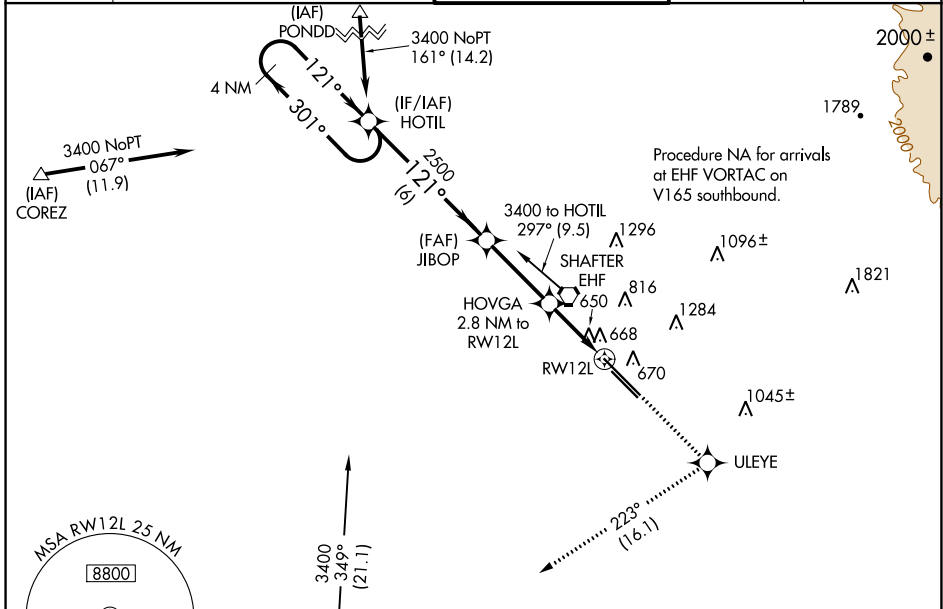
MEADOWS FLD (BFL)

RNP APCH.

Baro-VNAV NA when using Porterville altimeter setting. For uncompensated Baro-VNAV systems, LNAV/VNAV NA below -16°C or above 54°C. Rwy 12L helicopter visibility reduction below ¾ SM NA. When local altimeter setting not received, use Porterville altimeter setting and increase all DA 92 feet, all MDA 100 feet, increase LPV all Cats, LNAV/VNAV all Cats and LNAV Cats C/D visibility ¼ mile.

MISSED APPROACH: Climb to 3000 direct ULEYE and right turn on track 223° to MARIC and hold.

ATIS 118.6	BAKERSFIELD APP CON * 118.8 284.625 (SOUTH) 118.9 270.3 (NORTH)	BAKERSFIELD TOWER * 118.1 (CTAF) 257.8	GND CON 121.7	UNICOM 122.95
----------------------	--	---	-------------------------	-------------------------



SW-3, 11 JUL 2024 to 08 AUG 2024

SW-3, 11 JUL 2024 to 08 AUG 2024

ELEV 510		TDZE 510	
<p>4 NM Holding Pattern</p> <p>3400 ← 301°</p> <p>GP 3.00° TCH 52</p>		<p>HOTIL</p> <p>JIBOP</p> <p>ULEYE</p> <p>MARIC</p>	
<p>3000</p> <p>HOVGA 2.8 NM to RW12L</p>		<p>2500</p> <p>1.1 NM to RW12L</p> <p>RW12L</p>	
<p>6 NM</p>		<p>3.2 NM</p> <p>1.7 NM</p> <p>1.1</p>	
CATEGORY	A	B	C
LPV DA	760-1 250 (300-1)		
LNAV/VNAV DA	1073-2 563 (600-2)		
LNAV MDA	920-1 410 (500-1)		920-1¼ 410 (500-1¼)
<p>TDZ/CL Rwy 30R</p> <p>HIRL Rwy 12L-30R</p> <p>MIRL Rwy 12R-30L</p> <p>REIL Rwy 12R and 30L</p>			