

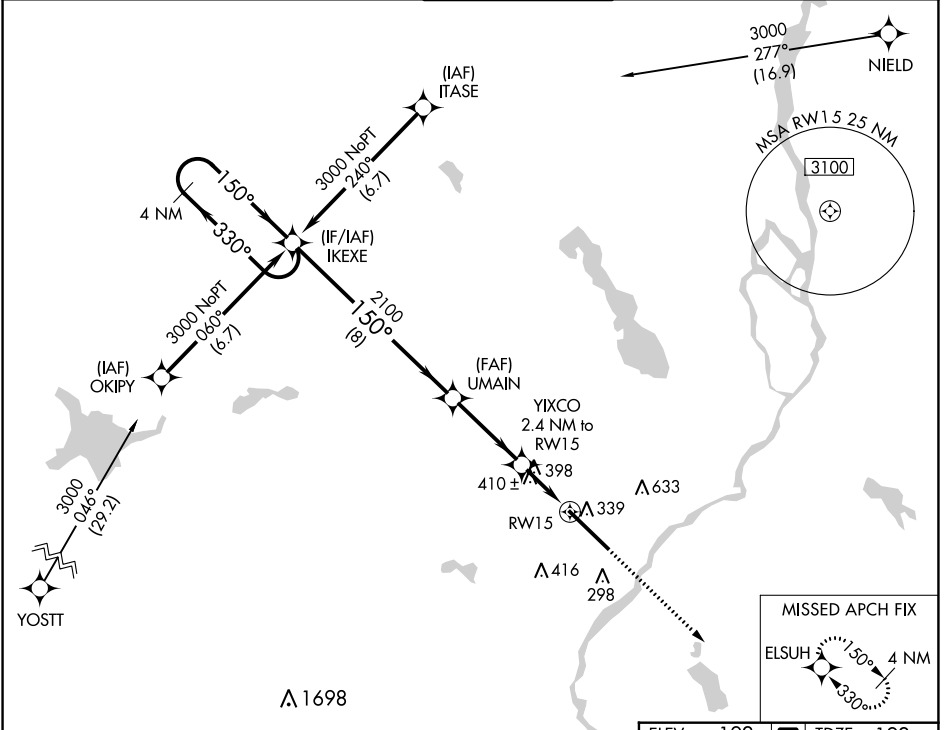
WAAS CH 82307 W15A	APP CRS 150°	Rwy Idg 11440 TDZE 192 Apt Elev 192
---------------------------------	------------------------	--

RNAV (GPS) RWY 15

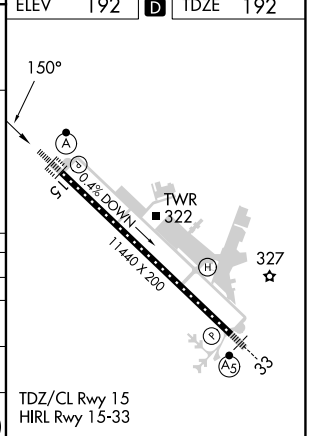
BANGOR INTL (BGR)

<p>ASR</p>	<p>For uncompensated Baro-VNAV systems, LNAV/VNAV NA below -19°C (-2°F) or above 54°C (130°F). DME/DME RNP-0.3 NA. For inoperative ALS, increase LPV Cat E visibility to RVR 4000, LNAV/VNAV all Cats visibility to RVR 6000, and LNAV Cats C/D/E visibility to 1 3/8 SM. Circling NA NE of Rwy 15-33.</p>	<p>ALSIF-2</p>	<p>MISSED APPROACH: Climb to 3000 direct ELSUH and hold.</p>
------------	--	----------------	--

<p>ATIS 127.75</p>	<p>BANGOR APP CON 118.925 239.3</p>	<p>BANGOR TOWER 120.7 233.7</p>	<p>GND CON 121.9 348.6</p>	<p>CLNC DEL 135.9 348.6</p>
-------------------------------	--	--	---------------------------------------	--



<p>4 NM Holding Pattern</p> <p>3000 ← 330° / 150° →</p> <p>GP 3.00° TCH 50</p>		<p>VGSI and RNAV glidepath not coincident (VGSI Angle 3.00/TCH 55).</p>		<p>3000</p> <p>ELSUH</p> <p>* LNAV only.</p>	
<p>IKEXE</p> <p>2100</p> <p>1000*</p>		<p>UMAIN</p> <p>YIXCO 2.4 NM to RW15</p> <p>* 1.3 NM to RW15</p> <p>RW15</p>		<p>8 NM</p> <p>3.4 NM</p> <p>1.1</p> <p>1.3</p>	
CATEGORY	A	B	C	D	E
LPV DA	392/24		200 (200-1/2)		
LNAV/VNAV DA	541/40		349 (400-3/4)		
LNAV MDA	660/24	468 (500-1/2)	660/50		468 (500-1)
CIRCLING	660-1 468 (500-1)	720-1 528 (600-1)	740-1 1/2 548 (600-1 1/2)	820-2 628 (700-2)	880-2 1/2 688 (700-2 1/2)



NE-1, 11 JUL 2024 to 08 AUG 2024

NE-1, 11 JUL 2024 to 08 AUG 2024