

LOC/DME I-BTR <b>110.3</b> Chan <b>40</b>	APP CRS <b>133°</b>	Rwy Idg <b>5720</b> TDZE <b>67</b> Apt Elev <b>70</b>
---	------------------------	---

# ILS or LOC RWY 13

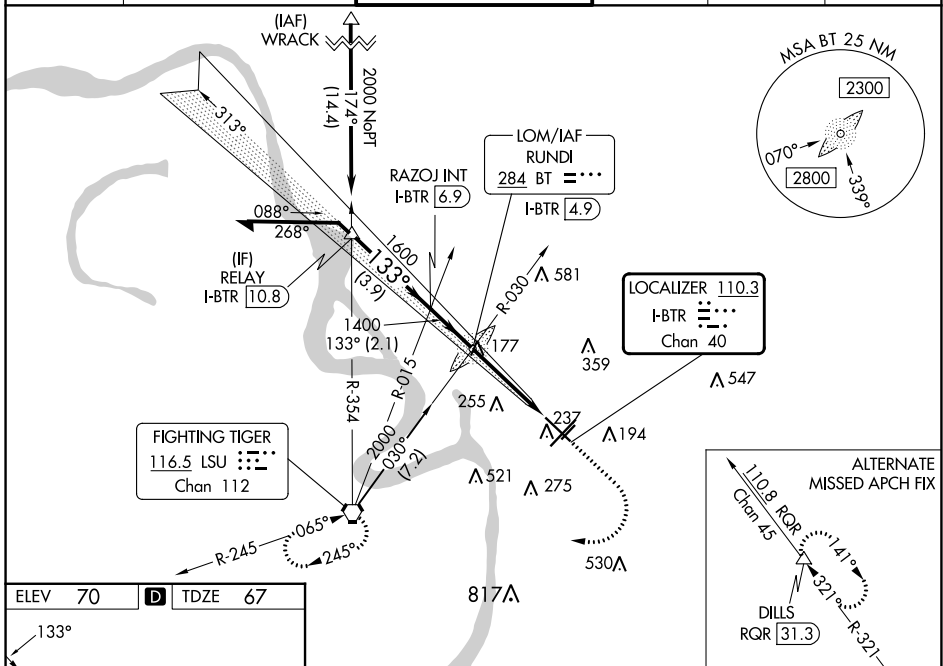
BATON ROUGE METRO, RYAN FLD (BTR)

**ASR** For inop MALSRR when using Hammond altimeter setting, increase S-ILS 13 all Cats visibility to 3/8 mile, and S-LOC 13 visibility to 1 3/8 mile. VDP NA with Hammond altimeter setting. When local altimeter setting not received, use Hammond altimeter setting and increase all DA 91 feet and all MDA 100 feet, increase S-LOC 13 Cats C and D visibility 1/4 mile, increase Circling Cats C and D visibility 1/4 mile. For inop MALSRR, increase S-LOC 13 Cats C and D to 1 1/8 mile.

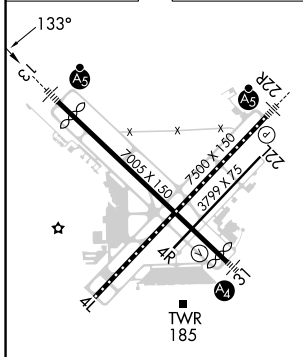
**MALSRR**

**MISSED APPROACH:**  
Climb to 700 then climbing right then to 2000 direct LSU VORTAC and hold.

ATIS <b>125.2</b>	BATON ROUGE APP CON * <b>120.3 278.3</b>	RYAN TOWER * <b>118.45 (CTAF) 257.8</b>	GND CON <b>121.9</b>	CLNC DEL <b>119.4</b>	UNICOM <b>122.95</b>
----------------------	---	--	-------------------------	--------------------------	-------------------------



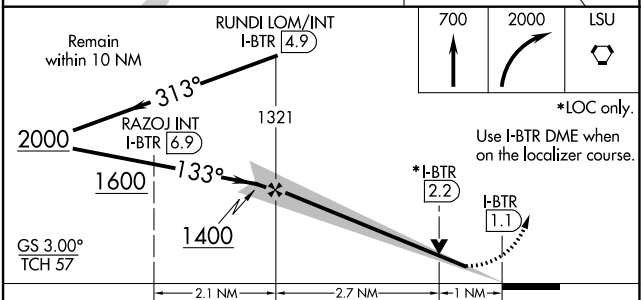
ELEV 70	<b>D</b>	TDZE 67
---------	----------	---------



TDZ/CL Rwy 22R  
HIRL Rwy 13-31 and 4L-22R  
MIRL Rwy 4R-22L

FAF to MAP 3.7 NM

Knots	60	90	120	150	180
Min:Sec	3:42	2:28	1:51	1:29	1:14



CATEGORY	A	B	C	D
S-ILS 13		267-1/2	200 (200-1/2)	
S-LOC 13	480-1/2	413 (500-1/2)	480-3/4	413 (500-3/4)
<b>C</b> CIRCLING	560-1 490 (500-1)	660-1 590 (600-1)	780-2 710 (800-2)	840-2 1/2 770 (800-2 1/2)

SC-4, 11 JUL 2024 to 08 AUG 2024

SC-4, 11 JUL 2024 to 08 AUG 2024