

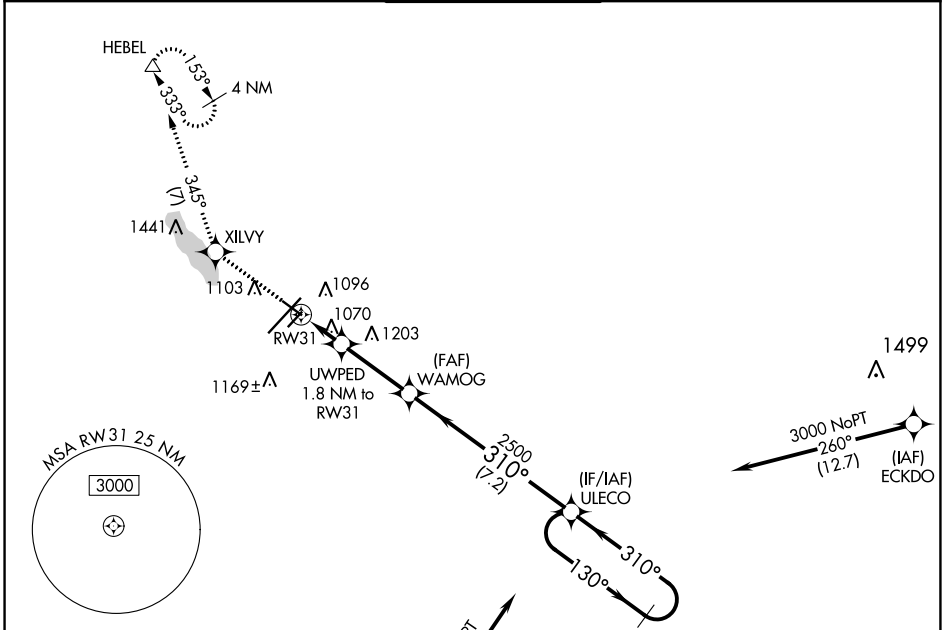
APP CRS	Rwy Idg	4835
310°	TDZE	930
	Apt Elev	952

RNAV (GPS) RWY 31

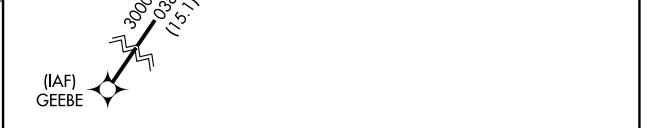
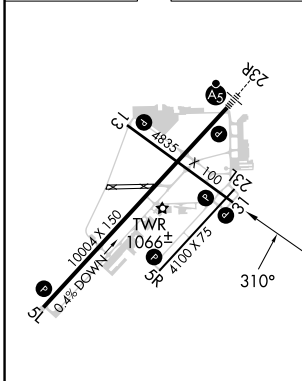
BATTLE CREEK EXEC AT KELLOGG FLD (BTL)

RNP APCH.	MISSED APPROACH: Climb to 3000 direct XILVY and on 345° track to HEBEL and hold.
<p>▼ Circling NA to Rwys 5R and 23L. Rwy 31 helicopter visibility reduction below 1 SM NA. Procedure NA at night.</p>	

ATIS 128.325	GREAT LAKES APP CON★ 119.2 239.25	BATTLE CREEK TOWER★ 126.825 (CTAF)	GND CON 121.7	UNICOM 122.95
------------------------	---	--	-------------------------	-------------------------



ELEV 952	D	TDZE 930
----------	----------	----------



3000	XILVY	tr 345°	HEBEL	4 NM Holding Pattern
UWPED 1.8 NM to RW31	WAMOG	3.00 TCH 40	2500	130° → 3000
RW31	1540	310°	7.2 NM	← 310°
VGSI and descent angles not coincident (VGSI Angle 3.00/TCH 25).				

CATEGORY	A	B	C	D
LNAV MDA	1320-1	390 (400-1)	1320-1½	390 (400-1½)
C CIRCLING	1420-1 468 (500-1)	1480-1 528 (600-1)	1520-1½ 568 (600-1½)	1520-2 568 (600-2)

HIRL Rwy 5L-23R
MIRL Rwys 13-31 and 5R-23L
REIL Rwys 5L, 5R, 13, 23L and 31

EC-1, 11 JUL 2024 to 08 AUG 2024

EC-1, 11 JUL 2024 to 08 AUG 2024