

WAAS CH 49141 W13A	APP CRS 128°	Rwy Idg 3668 TDZE 31 Apt Elev 32
--	------------------------	---

RNAV (GPS) RWY 13

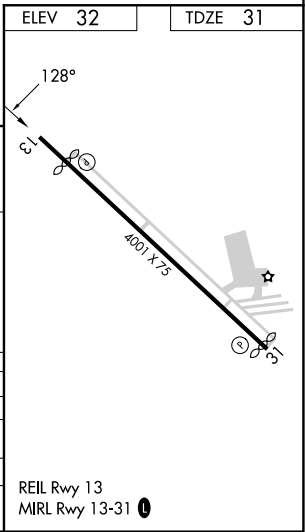
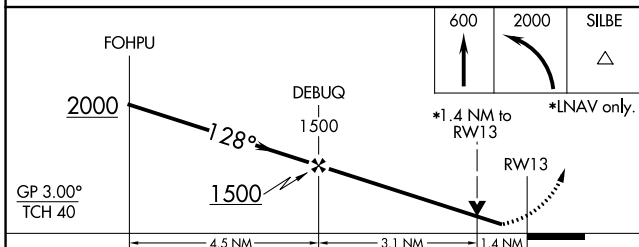
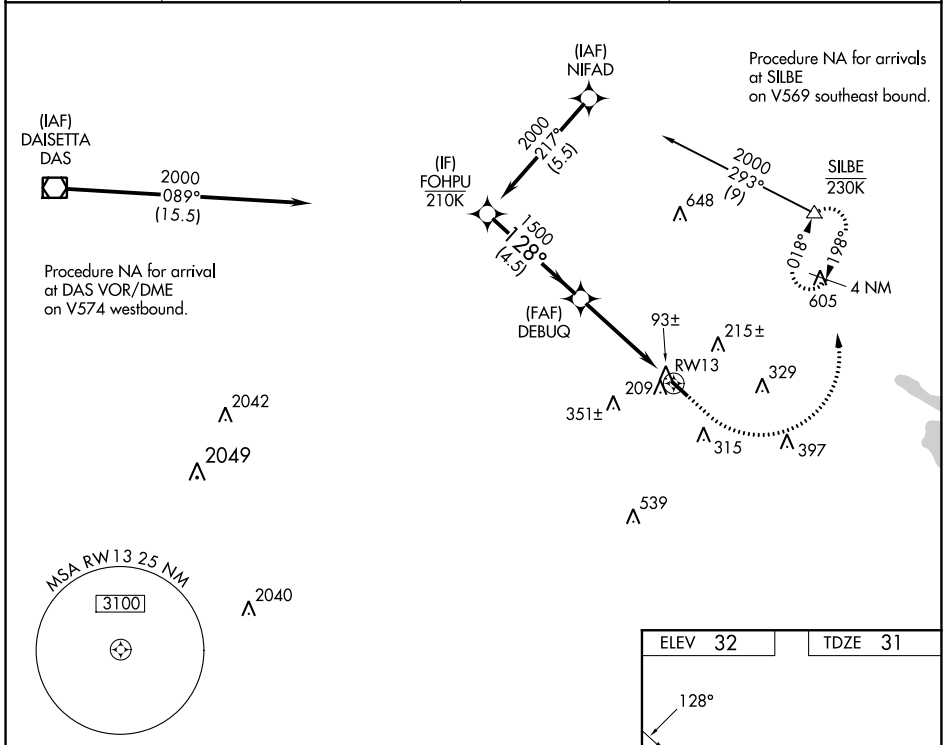
BEAUMONT MUNI (BMT)

RNP APCH GPS.

▼ For uncompensated Baro-VNAV systems, LNAV/VNAV NA below -15°C or above 54°C. Circling Rwy 31 NA at night. Rwy 13 helicopter visibility reduction below ¾ SM NA.

MISSED APPROACH: (Do not exceed 230K until SILBE) Climb to 600 then climbing left turn to 2000 direct SILBE and hold.

AWOS-3PT 118.425	HOUSTON APP CON 121.3 377.1	CLNC DEL 121.75	UNICOM 123.0 (CTAF) 1
----------------------------	---------------------------------------	---------------------------	--



CATEGORY	A	B	C	D
LPV DA		295- ⁷ / ₈	264 (300- ⁷ / ₈)	
LNAV/VNAV DA		433-1 ¹ / ₈	402 (500-1 ¹ / ₈)	
LNAV MDA	520-1	489 (500-1)	520-1 ³ / ₈	489 (500-1 ³ / ₈)
CIRCLING	580-1	620-1	720-2	720-2 ¹ / ₄
	548 (600-1)	588 (600-1)	688 (700-2)	688 (700-2 ¹ / ₄)

SC-5, 11 JUL 2024 to 08 AUG 2024

SC-5, 11 JUL 2024 to 08 AUG 2024