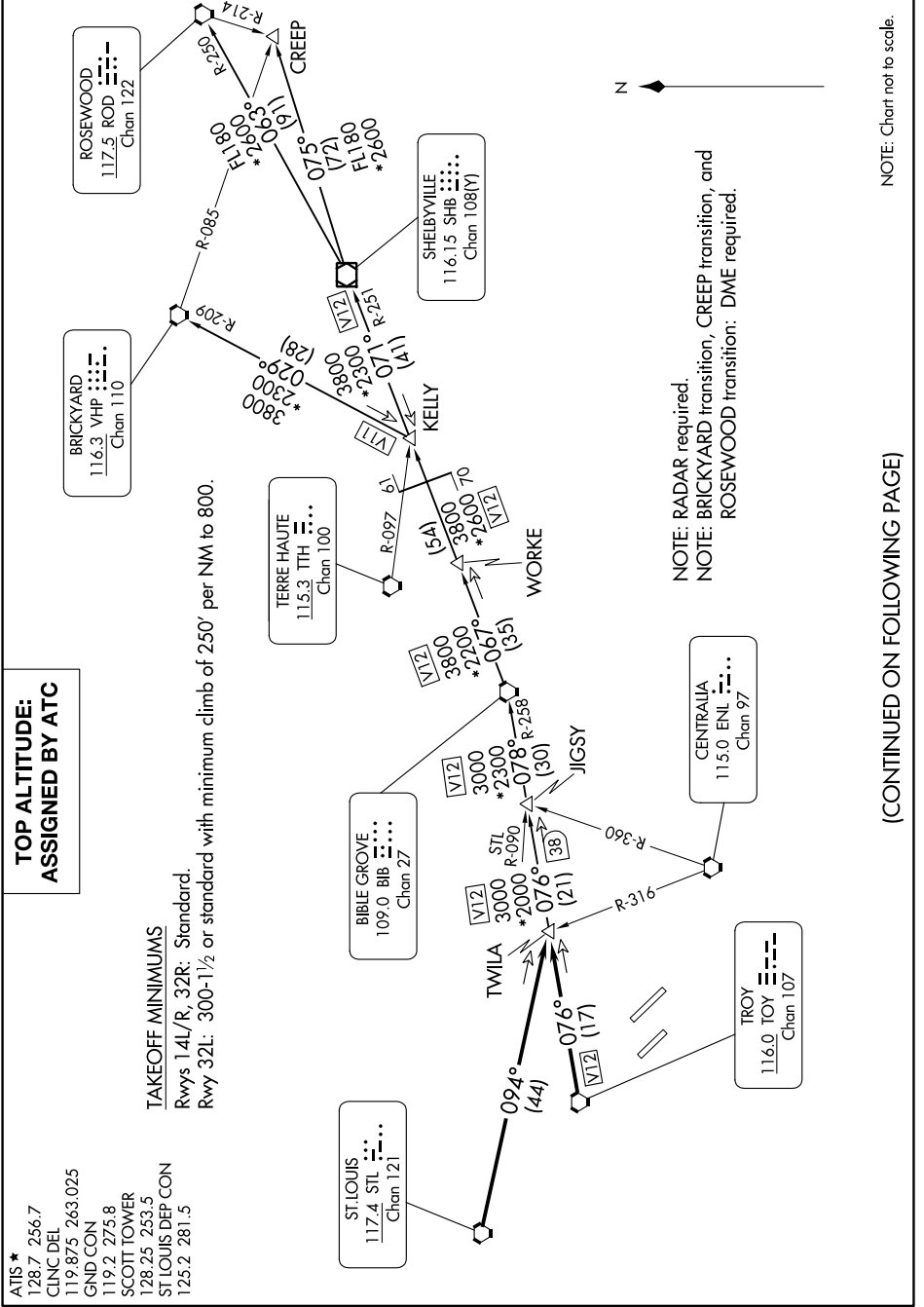


GATEWAY ONE DEPARTURE

AL-46 (FAA)

SCOTT AFB/MIDAMERICA ST LOUIS (BLV)
BELLEVILLE, ILLINOIS

EC-3, 11 JUL 2024 to 08 AUG 2024



**TOP ALTITUDE:
ASSIGNED BY ATC**

- ATIS * 128.7 256.7
- CINC DEL 119.875 263.025
- GND CON 119.2 275.8
- SCOTT TOWER 128.25 253.5
- ST LOUIS DEP CON 125.2 281.5

TAKEOFF MINIMUMS

Rwys 14L/R, 32R: Standard.
Rwy 32L: 300-1½ or standard with minimum climb of 250' per NM to 800.

NOTE: RADAR required.
NOTE: BRICKYARD transition, CREEP transition, and ROSEWOOD transition: DME required.

(CONTINUED ON FOLLOWING PAGE)

NOTE: Chart not to scale.

EC-3, 11 JUL 2024 to 08 AUG 2024