

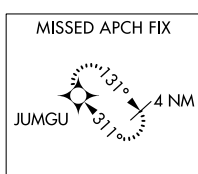
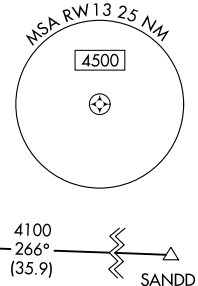
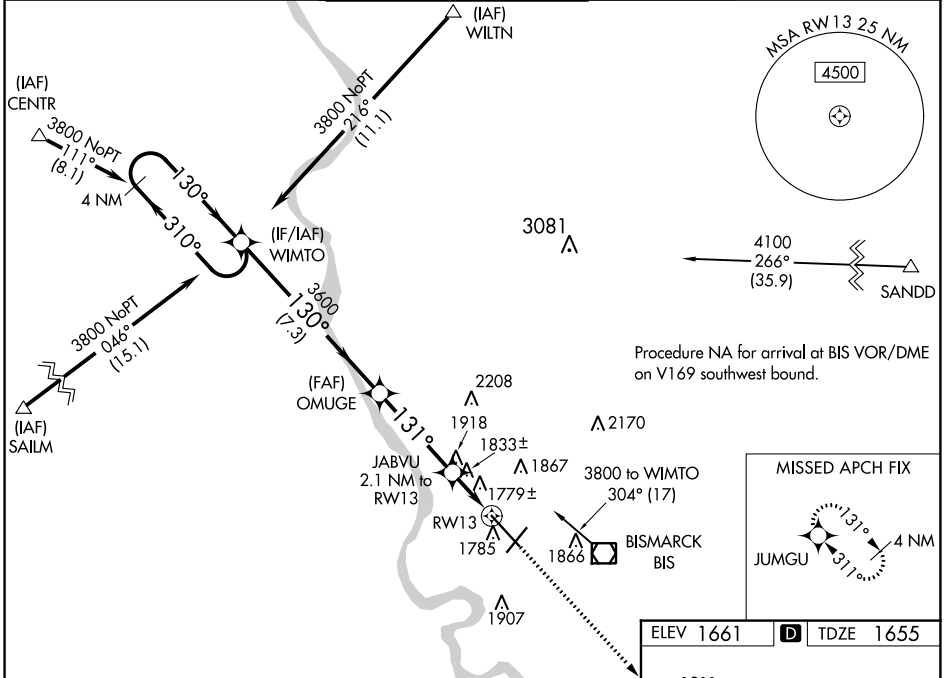
WAAS CH <b>86920</b> <b>W13A</b>	APP CRS <b>131°</b>	Rwy Idg <b>8794</b> TDZE <b>1655</b> Apt Elev <b>1661</b>
--	------------------------	---

# RNAV (GPS) RWY 13

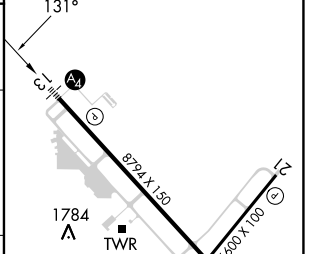
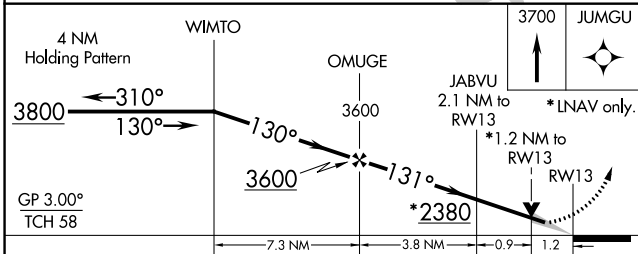
BISMARCK MUNI (BIS)

 	Inoperative table does not apply. For uncompensated Baro-VNAV systems, LNAV/VNAV NA below -18°C (0°F) or above 33°C (91°F). DME/DME RNP-0.3 NA.	MALS 	MISSED APPROACH: Climb to 3700 direct JUMGU and hold.
		(A2)	

ATIS <b>119.35</b>	BISMARCK APP CON * <b>126.3 298.9</b>	BISMARCK TOWER * <b>118.3 (CTAF) 0 257.8</b>	GND CON <b>121.9</b>	UNICOM <b>122.95</b>
-----------------------	--	---	-------------------------	-------------------------



ELEV 1661	<b>D</b>	TDZE 1655
-----------	----------	-----------



CATEGORY	A	B	C	D
LPV DA	1855-3/4		200 (200-3/4)	
LNAV/VNAV DA	2083-1 3/8		428 (500-1 3/8)	
LNAV MDA	2100-1	445 (500-1)	2100-1 3/8	445 (500-1 3/8)
<b>C</b> CIRCLING	2200-1	539 (600-1)	2460-2 1/4	2460-2 1/2
			799 (800-2 1/4)	799 (800-2 1/2)

NC-1, 11 JUL 2024 to 08 AUG 2024

NC-1, 11 JUL 2024 to 08 AUG 2024