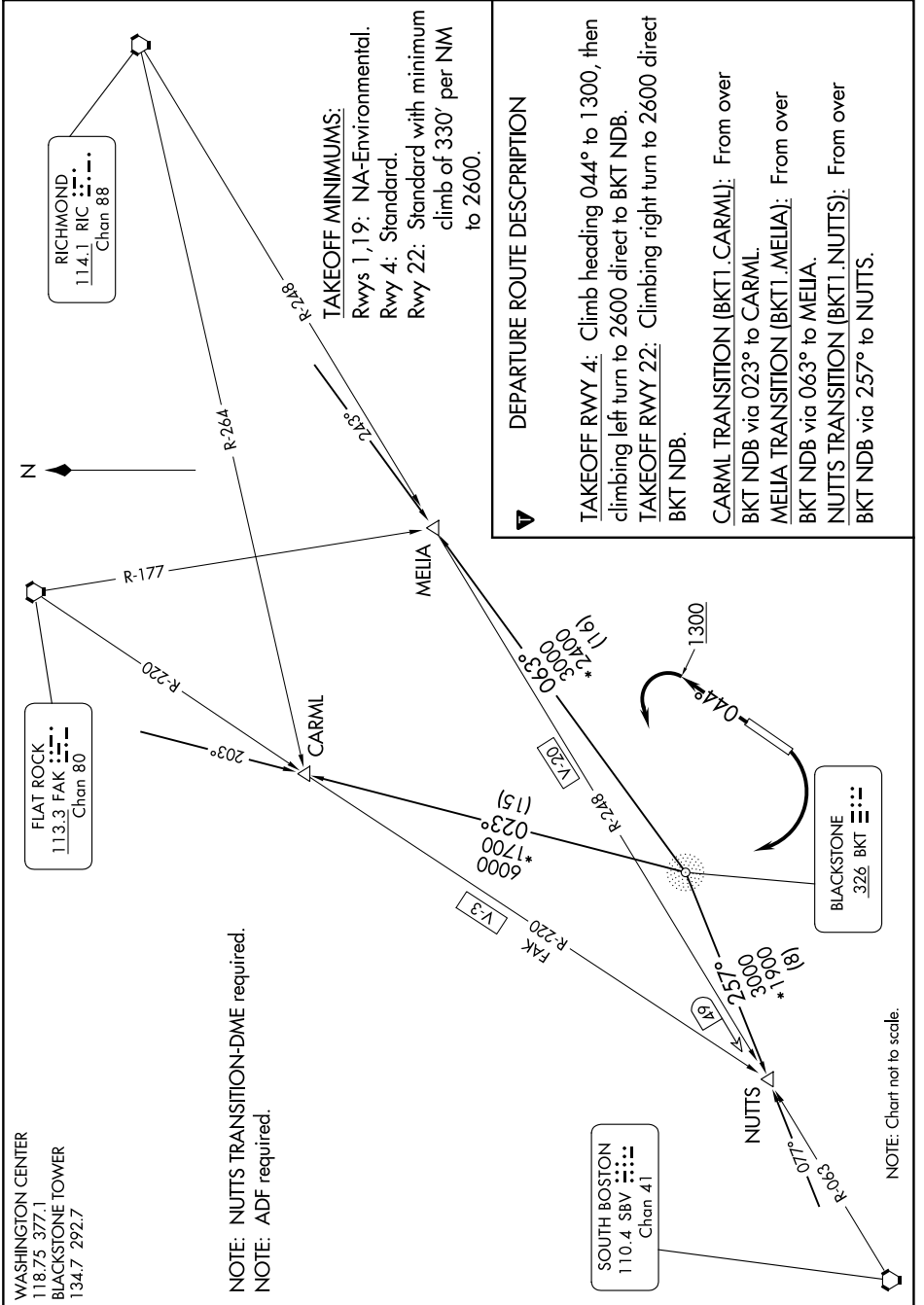


BLACKSTONE ONE DEPARTURE

NE-3, 11 JUL 2024 to 08 AUG 2024



WASHINGTON CENTER
118.75 377.1
BLACKSTONE TOWER
134.7 292.7

FLAT ROCK
113.3 FAK
Chan 80

RICHMOND
114.1 RIC
Chan 88

SOUTH BOSTON
110.4 SBV
Chan 41

BLACKSTONE
326 BKT

NOTE: NUTTS TRANSITION+DME required.
NOTE: ADF required.

NOTE: Chart not to scale.

DEPARTURE ROUTE DESCRIPTION

TAKEOFF RWY 4: Climb heading 044° to 1300, then climbing left turn to 2600 direct to BKT NDB.
TAKEOFF RWY 22: Climbing right turn to 2600 direct BKT NDB.

CARMEL TRANSITION (BKT1.CARMEL): From over BKT NDB via 023° to CARMEL.
MELIA TRANSITION (BKT1.MELIA): From over BKT NDB via 063° to MELIA.
NUTTS TRANSITION (BKT1.NUTTS): From over BKT NDB via 257° to NUTTS.

TAKEOFF MINIMUMS:

Rwys 1, 19: NA-Environmental.
 Rwy 4: Standard.
 Rwy 22: Standard with minimum climb of 330' per NM to 2600.

NE-3, 11 JUL 2024 to 08 AUG 2024

BLACKSTONE ONE DEPARTURE