

(PELYT.SADYL4) 21112

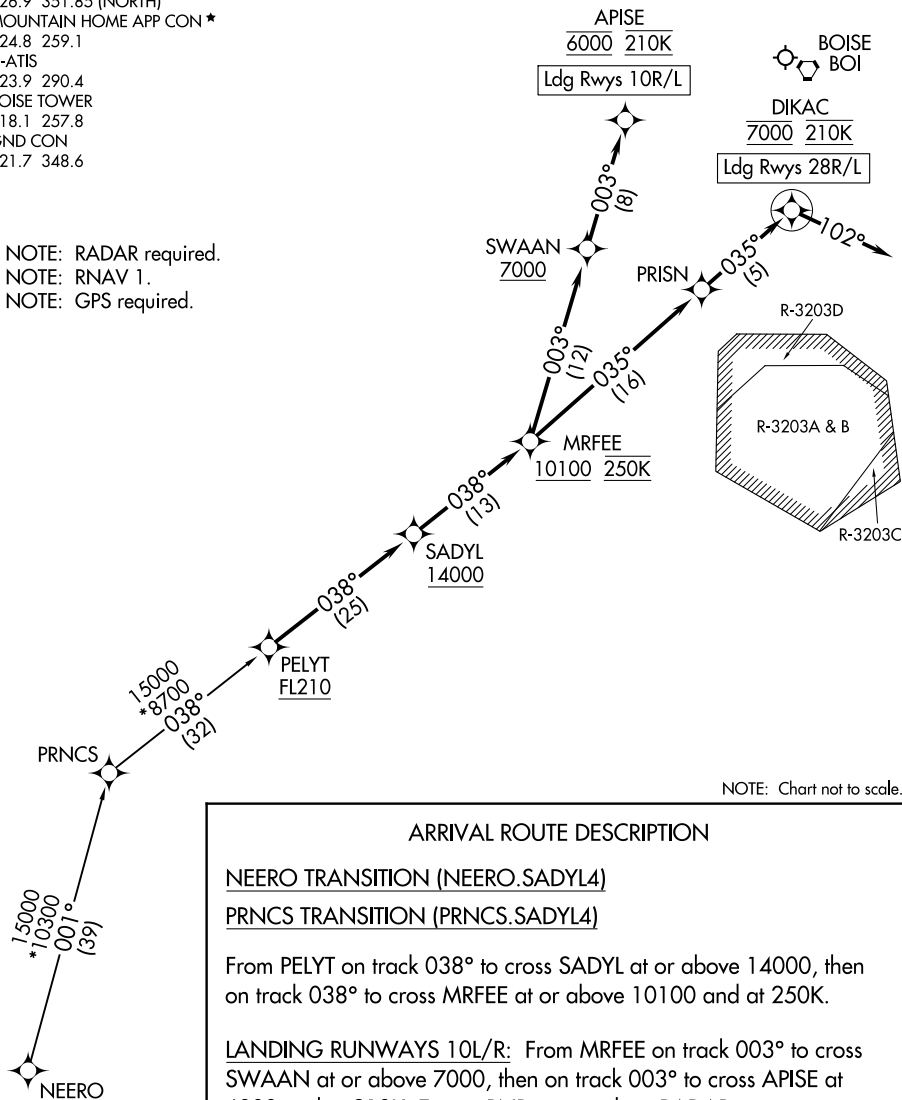
# SADYL FOUR ARRIVAL (RNAV)

AL-57 (FAA)

BOISE AIR TRML/GOWEN FLD (BOI)  
BOISE, IDAHO

BIG SKY APP CON  
 119.6 269.4 (SOUTH)  
 126.9 351.85 (NORTH)  
 MOUNTAIN HOME APP CON ★  
 124.8 259.1  
 D-ATIS  
 123.9 290.4  
 BOISE TOWER  
 118.1 257.8  
 GND CON  
 121.7 348.6

NOTE: RADAR required.  
 NOTE: RNAV 1.  
 NOTE: GPS required.



NOTE: Chart not to scale.

## ARRIVAL ROUTE DESCRIPTION

### NEERO TRANSITION (NEERO.SADYL4)

### PRNCS TRANSITION (PRNCS.SADYL4)

From PELYT on track 038° to cross SADYL at or above 14000, then on track 038° to cross MRFEE at or above 10100 and at 250K.

LANDING RUNWAYS 10L/R: From MRFEE on track 003° to cross SWAAN at or above 7000, then on track 003° to cross APISE at 6000 and at 210K. Expect RNP approach or RADAR vectors to final approach course.

LANDING RUNWAYS 28L/R: From MRFEE on track 035° to PRISN, then on track 035° to cross DIKAC at 7000 and at 210K, then on heading 102° or as assigned by ATC. Expect RNP approach or RADAR vectors to final approach course.

# SADYL FOUR ARRIVAL (RNAV)

(PELYT.SADYL4) 10SEP20

BOISE, IDAHO  
BOISE AIR TRML/GOWEN FLD (BOI)

NW-1, 11 JUL 2024 to 08 AUG 2024

NW-1, 11 JUL 2024 to 08 AUG 2024