

HYLND SEVEN DEPARTURE (RNAV)

AL-58 (FAA)

BOSTON, MASSACHUSETTS

BOSTON DEP CON
 133.0
 D-ATIS 135.0
 CLNC DEL
 121.65 257.8
 CPDLC
 GND CON
 121.75 121.9
 BOSTON TOWER
 128.8 257.8 (WEST)
 132.225 257.8 (EAST)

RNAV 1 - DME/DME/IRU or GPS.

TOP ALTITUDE:
5000

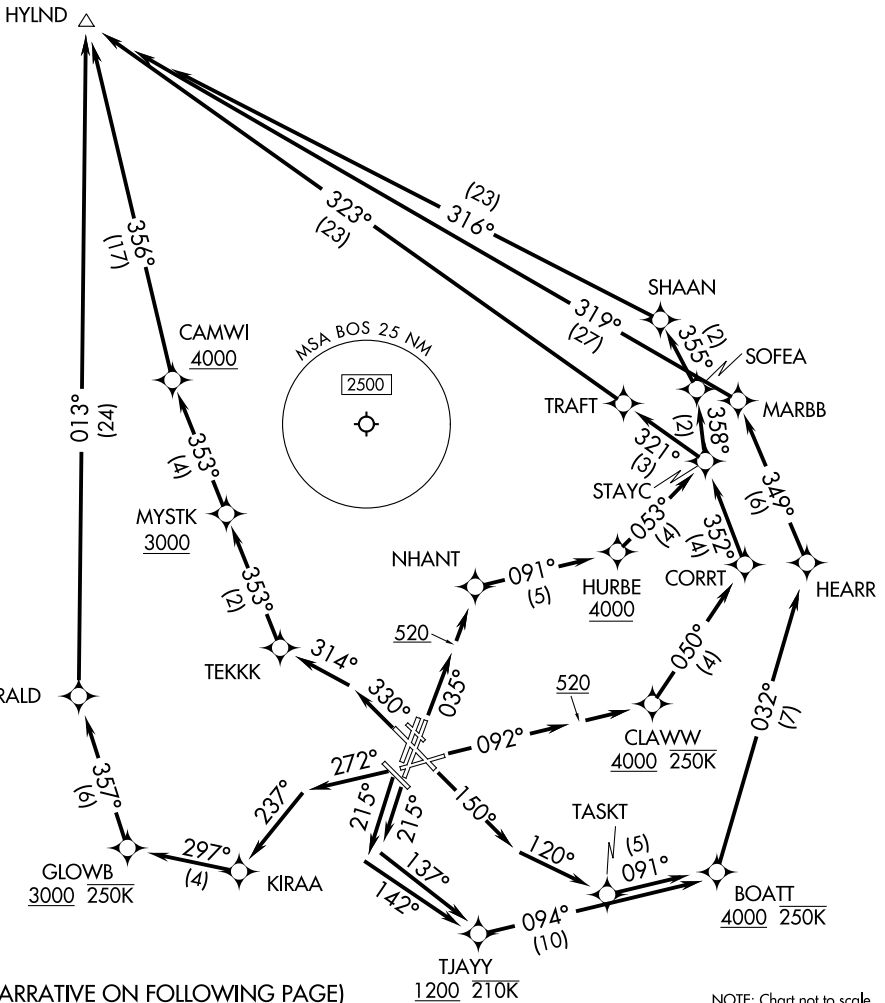
RADAR required for non-GPS equipped aircraft.

TAKEOFF MINIMUMS:

Rwys 4L, 14, 15L, 32, 33R: NA-ATC.
 Rwys 4R, 9, 15R, 22R, 33L: Standard with minimum climb of 500'/NM to 520.
 Rwy 22L: 300-1 with minimum climb of 500'/NM to 520, or standard with minimum climb of 500'/NM to 520 if tower reports no tall vessels in the departure area.
 Rwy 27: Standard with minimum climb of 500'/NM to 1300.

△ MANCH

NOTE: Jet aircraft only.



(NARRATIVE ON FOLLOWING PAGE)

NOTE: Chart not to scale.

HYLND SEVEN DEPARTURE (RNAV)

BOSTON, MASSACHUSETTS