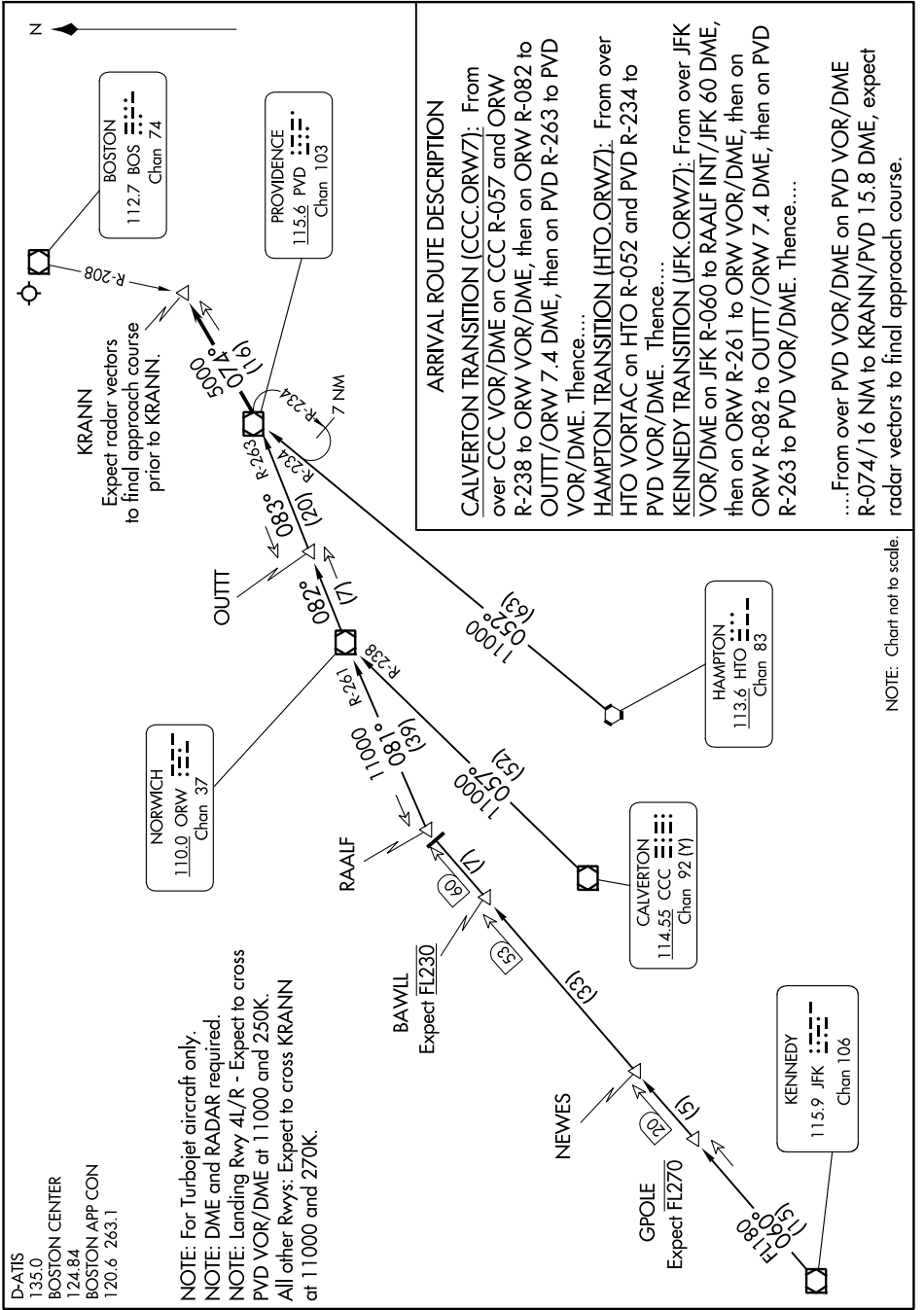


NORWICH SEVEN ARRIVAL

NE-1, 11 JUL 2024 to 08 AUG 2024



NORWICH SEVEN ARRIVAL

NOTE: Chart not to scale.

NE-1, 11 JUL 2024 to 08 AUG 2024

ARRIVAL ROUTE DESCRIPTION

CALVERTON TRANSITION (CCC.ORW7): From over CCC VOR/DME on CCC R-057 and ORW over R-238 to ORW VOR/DME, then on ORW R-082 to OUITT/ORW 7.4 DME, then on PVD R-263 to PVD VOR/DME. Thence....

HAMPTON TRANSITION (HTO.ORW7): From over HTO VORTAC on HTO R-052 and PVD R-234 to PVD VOR/DME. Thence....

KENNEDY TRANSITION (JFK.ORW7): From over JFK VOR/DME on JFK R-060 to RAALF INT/JFK 60 DME, then on ORW R-261 to ORW VOR/DME, then on ORW R-082 to OUITT/ORW 7.4 DME, then on PVD R-263 to PVD VOR/DME. Thence....

....From over PVD VOR/DME on PVD VOR/DME R-074/16 NM to KRANN/PVD 15.8 DME, expect radar vectors to final approach course.

NOTE: For Turbojet aircraft only.
NOTE: DME and RADAR required.
NOTE: Landing Rwy 4L/R - Expect to cross PVD VOR/DME at 11000 and 250K.
 All other Rwy's: Expect to cross KRANN at 11000 and 270K.

D-ATIS
 135.0
 BOSTON CENTER
 124.84
 BOSTON APP CON
 120.6 263.1