

APP CRS	Rwy Idg	<b>8994</b>
<b>303°</b>	TDZE	<b>4462</b>
	Apt Elev	<b>4473</b>

# RNAV (RNP) Z RWY 30

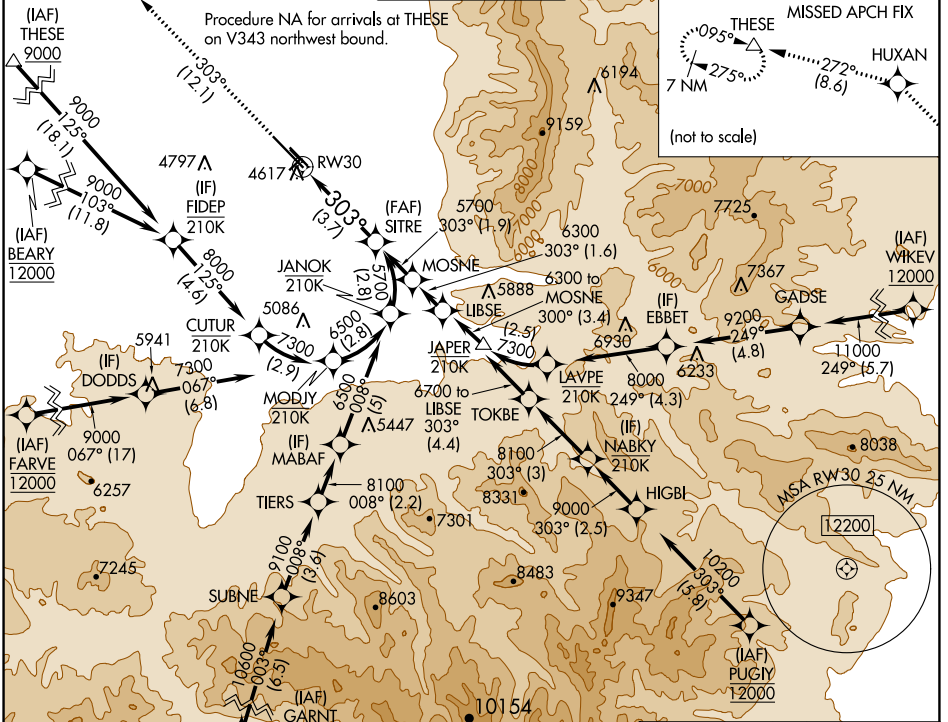
## BOZEMAN YELLOWSTONE INTL (BZN)

RNP AR APCH - GPS.

For uncompensated Baro-VNAV systems, procedure NA below -27°C or above 54°C. When local altimeter setting not received, procedure NA.

MISSED APPROACH: Climb to 10000 on track 303° to HUXAN and on track 272° to THESE and hold, continue climb-in-hold to 10000.

ATIS <b>135.425</b>	BIG SKY APP CON ★ <b>118.975 226.675</b>	BOZEMAN TOWER ★ <b>118.2 (CTAF) 0</b>	GND CON <b>121.8</b>	UNICOM <b>122.95</b>
------------------------	---	--	-------------------------	-------------------------



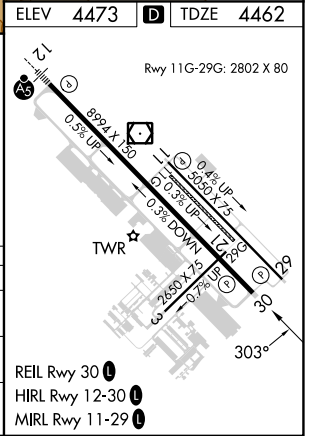
ELEV	<b>4473</b>	TDZE	<b>4462</b>
------	-------------	------	-------------



10000	HUXAN	tr 303°	THESE	SITRE
			tr 272°	5700
See planview for multiple IF locations.				
	RW30			
				GP 3.00°
				TCH 45
				3.7 NM

CATEGORY	A	B	C	D
RNP 0.11 DA		4806-1	344 (400-1)	
RNP 0.30 DA		4885-1¼	423 (500-1¼)	

**AUTHORIZATION REQUIRED**



- REIL Rwy 30 0
- HIRL Rwy 12-30 0
- MIRL Rwy 11-29 0

NW-1, 11 JUL 2024 to 08 AUG 2024

NW-1, 11 JUL 2024 to 08 AUG 2024