

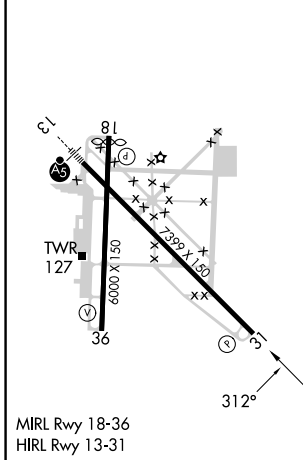
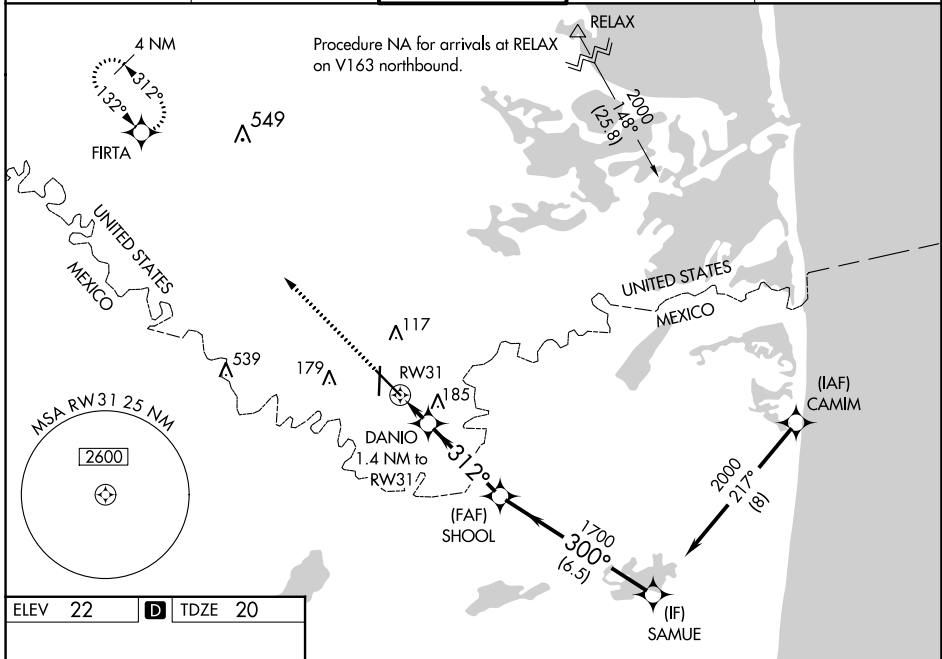
WAAS CH 65843 W31A	APP CRS 312°	Rwy Idg TDZE Apt Elev	7399 20 22
--	------------------------	-----------------------------	---------------------------------------

RNAV (GPS) RWY 31

BROWNSVILLE/SOUTH PADRE ISLAND INTL (BRO)

RNP APCH.		MISSED APPROACH: Climb to 2000 direct FIRTA and hold.	
⚠	Circling Rwy 18 NA at night. Rwy 31 helicopter visibility reduction below 3/4 SM NA. For uncompensated Baro-VNAV systems, LNAV/VNAV NA below 2° C or above 54° C.		

ATIS 128.55	VALLEY APP CON 119.5 257.6	BROWNSVILLE TOWER* 118.9(CTAF) 239.3	GND CON 121.9	UNICOM 122.95
-----------------------	--------------------------------------	---	-------------------------	-------------------------



2000 ↑ FIRTA *LNAV only.	VGSI and RNAV glidepath not coincident (VGSI Angle 3.00/TCH 68).			
	DANIO 1.4 NM to RWY 31 SHOOOL 1700 SAMUE 2000 GP 3.00° TCH 60			
*0.9 NM to RWY 31 *0.5 NM to RWY 31		3.7 NM 6.5 NM		
CATEGORY	A	B	C	D
LPV DA		270-3/4	250 (300-3/4)	
LNAV/VNAV DA		270-3/4	250 (300-3/4)	
LNAV MDA		380-1	360 (400-1)	
C CIRCLING	440-1 418 (500-1)	500-1 478 (500-1)	500-1 1/2 478 (500-1 1/2)	680-2 658 (700-2)

SC-3, 11 JUL 2024 to 08 AUG 2024

SC-3, 11 JUL 2024 to 08 AUG 2024