

VORTAC BRO <b>116.3</b> Chan 110	APP CRS <b>242°</b>	Rwy Idg TDZE Apt Elev	N/A N/A <b>22</b>
--	------------------------	-----------------------------	-------------------------

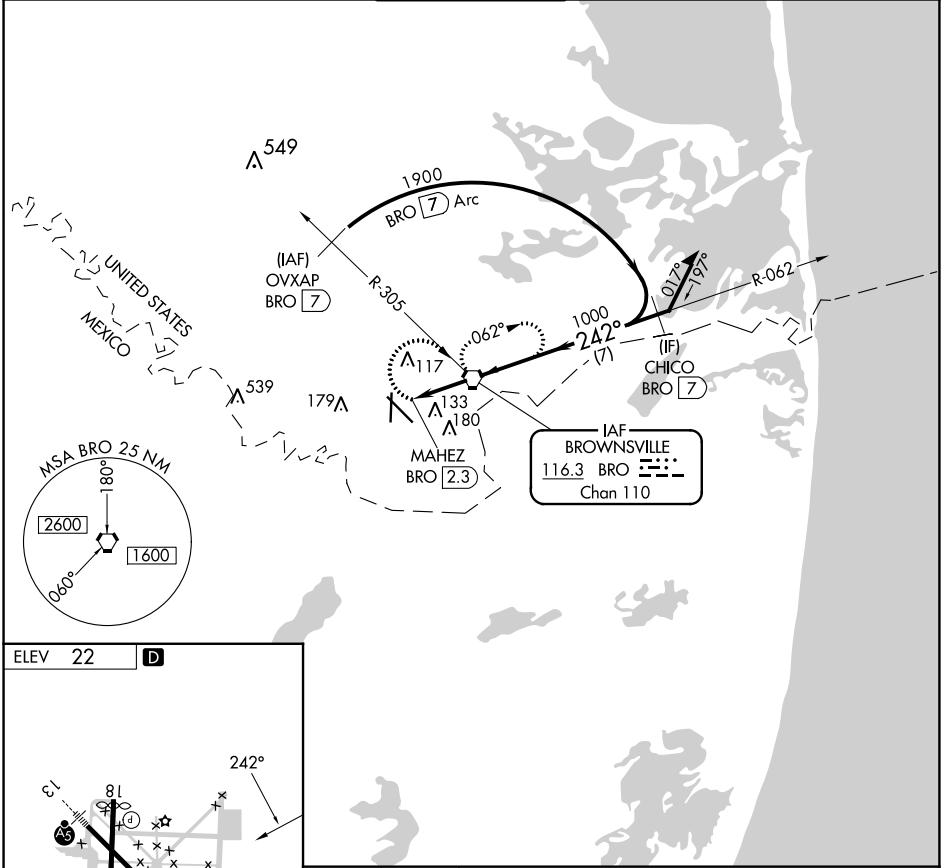
# VOR or TACAN-A

BROWNSVILLE/SOUTH PADRE ISLAND INTL (BRO)

▼ When local altimeter not received, use Port Label altimeter setting and increase all MDA 40 feet  
▲ and Circling Cat D visibility ¼ SM.

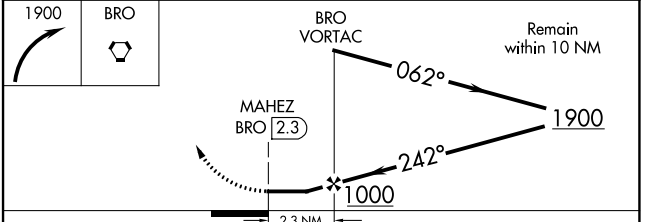
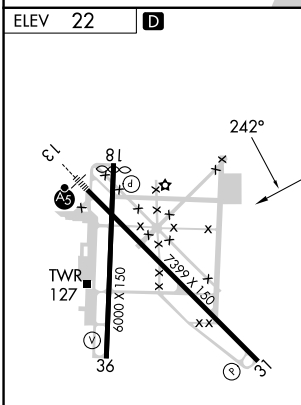
MISSED APPROACH: Climbing right turn to 1900 direct BRO VORTAC and hold. (TACAN aircraft climbing right turn to 1900 on BRO R-062 to CHICO/BRO 7 DME and hold NE, right turn, 242° inbound).

ATIS <b>128.55</b>	VALLEY APP CON <b>119.5 257.6</b>	BROWNSVILLE TOWER* <b>118.9</b> (CTAF) <b>239.3</b>	GND CON <b>121.9</b>	UNICOM <b>122.95</b>
-----------------------	--------------------------------------	--	-------------------------	-------------------------



SC-3, 11 JUL 2024 to 08 AUG 2024

SC-3, 11 JUL 2024 to 08 AUG 2024



FAF to MAP 2.3 NM					CATEGORY	A	B	C	D
Knots	60	90	120	150	180	440-1	540-1	540-1½	680-2
Min:Sec	2:18	1:32	1:09	0:55	0:46	418 (500-1)	518 (600-1)	518 (600-1½)	658 (700-2)
					<b>C</b> CIRCLING				