

WAAS CH 72736 W15A	APP CRS 146°	Rwy Idg TDZE Apt Elev	7820 326 335
----------------------------------------	------------------------	-----------------------------	-----------------------------------------

RNAV (GPS) RWY 15

PATRICK LEAHY BURLINGTON INTL (BTV)

RNP APCH - GPS.

⚠ Circling Rwy 1 NA at night. Rwy 15 helicopter visibility reduction below RVR 4000 NA. Inop table does not apply to LPV. For uncompensated Baro-VNAV systems, LNAV/VNAV NA below -22°C or above 54°C. For inop ALS, increase LNAV/VNAV all Cats visibility to RVR 4500 and LNAV all Cats visibility to RVR 5500.

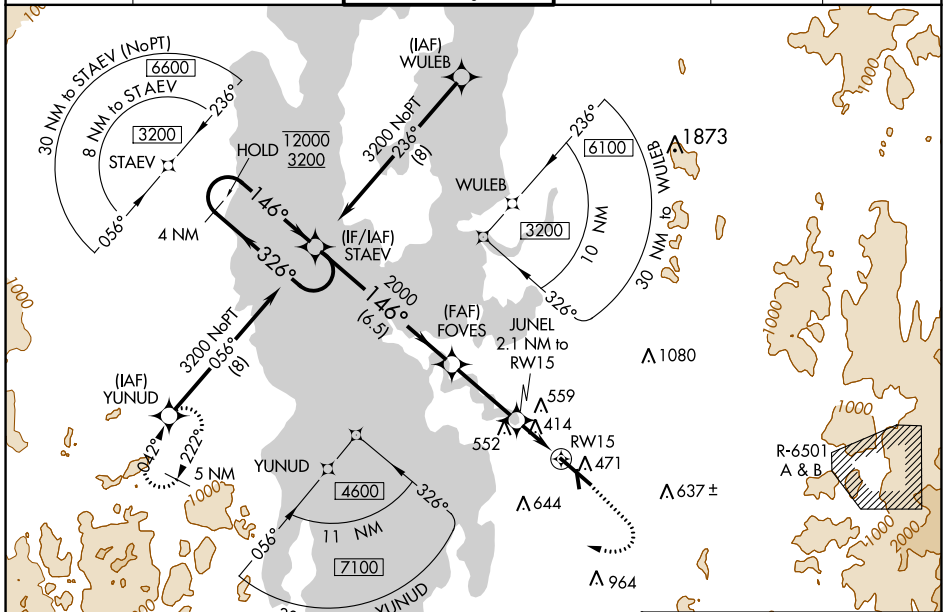
⚠ -10°C

MALSR



MISSED APPROACH: Climb to 1000 then climbing right turn to 5600 direct YUNUD and hold, continue climb-in-hold to 5600.

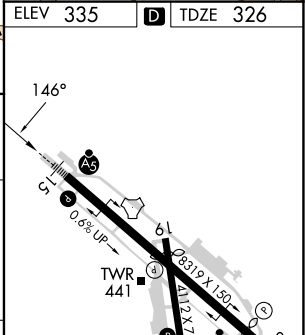
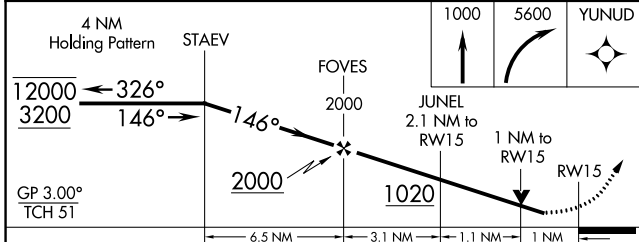
ATIS 123.8 269.9	BURLINGTON APP CON * 121.1 278.8	BURLINGTON TOWER * 118.3 (CTAF) 257.8	GND CON 126.3 348.6	CLNC DEL 119.15	UNICOM 122.95
----------------------------	--------------------------------------------	-------------------------------------------------	-------------------------------	---------------------------	-------------------------



NE-1, 11 JUL 2024 to 08 AUG 2024

NE-1, 11 JUL 2024 to 08 AUG 2024

ELEV 335	D TDZE 326
----------	-------------------



CATEGORY	A	B	C	D
LPV DA		576/40	250 (300-¾)	
LNAV/VNAV DA		645/40	319 (400-¾)	
LNAV MDA		680/40	354 (400-¾)	
C CIRCLING	840-1 505 (600-1)	860-1 525 (600-1)	1220-2¾ 885 (900-2¾)	1380-3 1045 (1100-3)

MIRL Rwy 1-19 **1**
HIRL Rwy 15-33 **1**