

APP CRS	Rwy Idg	<b>10201</b>
<b>303°</b>	TDZE	<b>1380</b>
	Apt Elev	<b>1384</b>

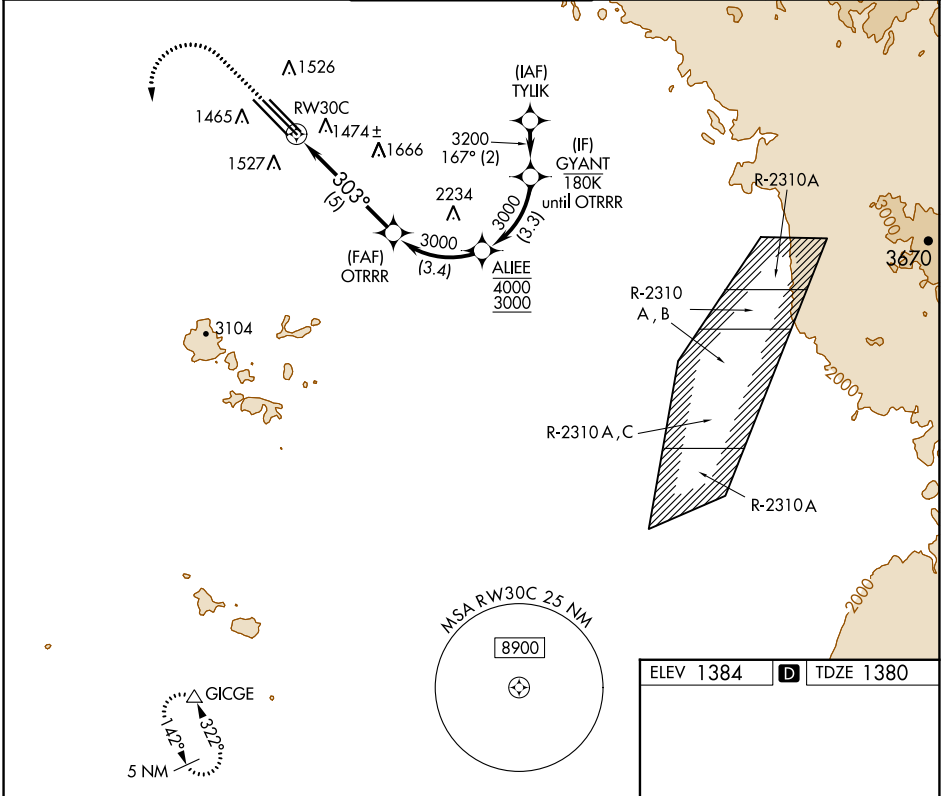
# RNAV (RNP) Z RWY 30C

PHOENIX-MESA GATEWAY (IWA)

**▼** For uncompensated Baro-VNAV systems, procedure NA below -17°C (2°F) or above 54°C (130°F). GPS and RF required.

MISSED APPROACH: Climb to 2800 then climbing left turn to 5000 direct GICGE and hold.

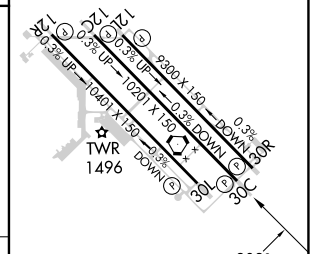
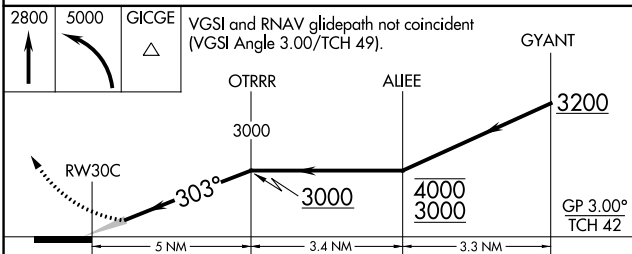
ATIS ★ <b>133.5 270.275</b>	PHOENIX APP CON <b>124.9 353.8</b>	GATEWAY TOWER ★ <b>120.6 (CTAF) 289.4</b>	GND CON <b>128.25 275.8</b>	CLNC DEL <b>135.05</b>
--------------------------------	---------------------------------------	--	--------------------------------	---------------------------



SW-4, 11 JUL 2024 to 08 AUG 2024

SW-4, 11 JUL 2024 to 08 AUG 2024

ELEV 1384	<b>D</b> TDZE 1380
-----------	--------------------



CATEGORY	A	B	C	D
RNP 0.21 DA		1637-7/8	257 (300-7/8)	
RNP 0.30 DA		1711-11/8	331 (400-11/8)	

MIRL Rwy 12R-30L  
HIRL Rwy 12L-30R and 12C-30C  
REIL Rwy 12L and 30R

## AUTHORIZATION REQUIRED