

(BEAVY6.BEAVY) 24081

AL-78 (FAA)

CHARLOTTE/DOUGLAS INTL (CLT)  
CHARLOTTE, NORTH CAROLINA

# BEAVY SIX DEPARTURE (RNAV)

CHARLOTTE DEP CON  
120.5 257.2 (Rwys 36L/C)  
124.0 307.8 (Rwys 18L/C/R, 36R)

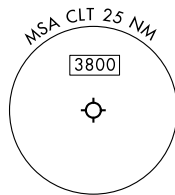
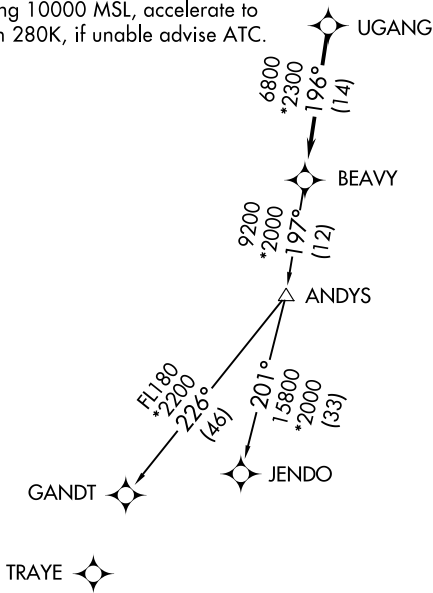
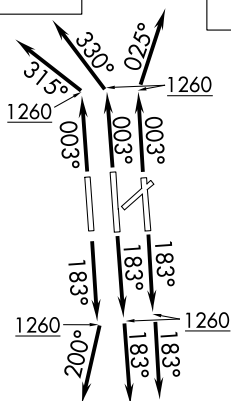
RNAV 1-DME/DME/IRU or GPS.

RADAR required.

**TOP ALTITUDE:  
8000**

D-ATIS DEP  
132.1  
CLNC DEL  
127.15 348.6  
CPDLC  
GND CON  
121.8 348.6 (WEST)  
121.9 348.6 (EAST)  
CHARLOTTE TOWER  
118.1 257.8 (Rwys 18L-36R)  
126.4 257.8 (Rwy 18C-36C)  
133.35 257.8 (Rwy 18R-36L)

- NOTE: For turbo jets only.
- NOTE: If unable to accept climb rates, advise ATC on initial contact.
- NOTE: Transponder code will be issued via PDC or Charlotte CLNC DEL.
- NOTE: Accelerate to 250K, if unable advise ATC. Upon reaching 10000 MSL, accelerate to and maintain 280K, if unable advise ATC.



### TAKEOFF MINIMUMS

Rwys 18L/C/R, 36C/R: Standard with minimum climb of 500' per NM to 1260.  
Rwy 36L: Standard with minimum climb of 500' per NM to 1400.

NOTE: Chart not to scale.

(CONTINUED ON FOLLOWING PAGE)

BEAVY SIX DEPARTURE (RNAV)

(BEAVY6.BEAVY) 21MAR24

CHARLOTTE, NORTH CAROLINA  
CHARLOTTE/DOUGLAS INTL (CLT)

SE-2, 11 JUL 2024 to 08 AUG 2024

SE-2, 11 JUL 2024 to 08 AUG 2024