

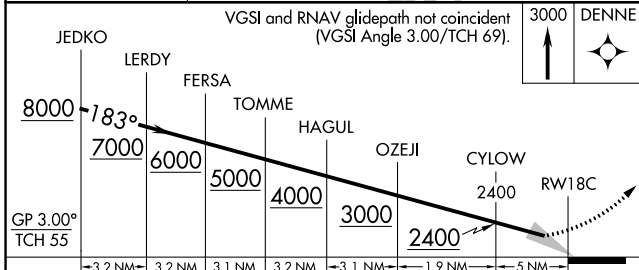
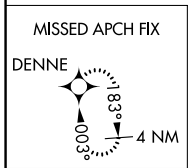
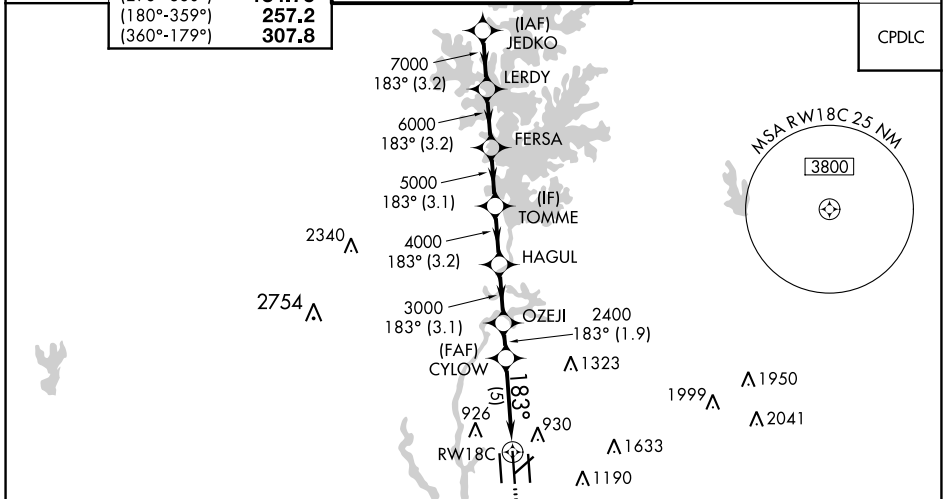
APP CRS	Rwy Idg <b>10000</b>
<b>183°</b>	TDZE <b>742</b>
	Apt Elev <b>748</b>

# RNAV (RNP) Z RWY 18C

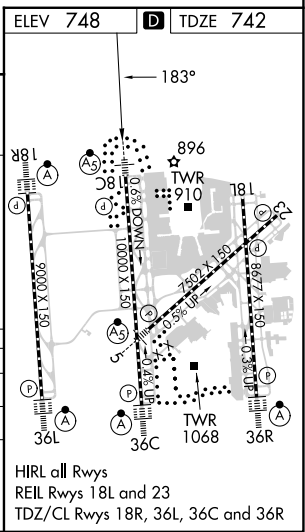
CHARLOTTE/DOUGLAS INTL (CLT)

RNP AR APCH.	MALSRL	MISSED APPROACH: Climb to 3000 direct DENNE and hold.

D-ATIS	CHARLOTTE APP CON	CHARLOTTE TOWER	GND CON	CLNC DEL
ARR <b>121.15</b>	(001°-119°) <b>128.325</b>	(Rwys 18L-36R) <b>118.1 257.8</b>	<b>121.8 348.6 (WEST)</b>	<b>127.15</b>
DEP <b>132.1</b>	(120°-295°) <b>120.05</b>	(Rwy 18C-36C) <b>126.4 257.8</b>	<b>121.9 348.6 (EAST)</b>	<b>348.6</b>
	(296°-360°) <b>134.75</b>	(Rwy 18R-36L) <b>133.35 257.8</b>		
	(180°-359°) <b>257.2</b>			
	(360°-179°) <b>307.8</b>			



CATEGORY	A	B	C	D
RNP 0.11 DA		1067/26	325 (400-½)	
RNP 0.30 DA		1177/40	435 (500-¾)	



**AUTHORIZATION REQUIRED**

SE-2, 11 JUL 2024 to 08 AUG 2024

SE-2, 11 JUL 2024 to 08 AUG 2024