

WAAS CH 86200 W36B	APP CRS 003°	Rwy Idg 10000 TDZE 707 Apt Elev 748
--	------------------------	--

RNAV (GPS) Y RWY 36C

CHARLOTTE/DOUGLAS INTL (CLT)

RNP APCH.

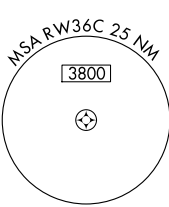
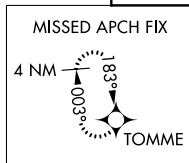
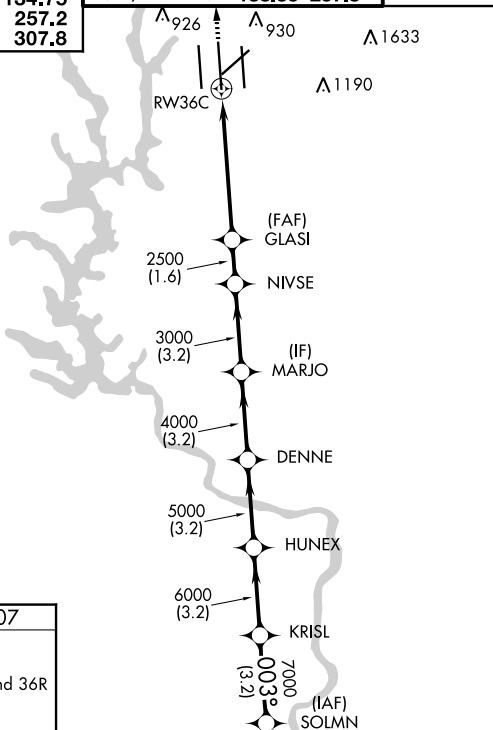
⚠ Circling NA at night. Simultaneous approach authorized. Use of FD or AP required during simultaneous operations. For uncompensated Baro-VNAV systems, LNAV/VNAV NA below -11°C or above 54°C. LNAV procedure NA during simultaneous operations.



MISSED APPROACH:
Climb to 3000 direct
TOMME and hold.

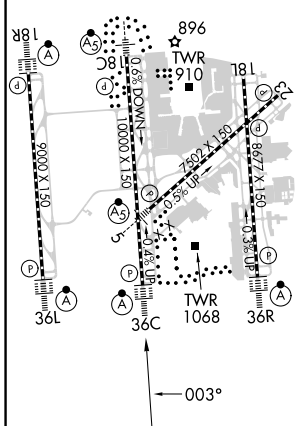
D-ATIS ARR 121.15 DEP 132.1	CHARLOTTE APP CON (001°-119°) 128.32 (120°-295°) 120.05 (296°-360°) 134.75 (180°-359°) 257.2 (360°-179°) 307.8	CHARLOTTE TOWER (Rwys 18L-36R) 118.1 257.8 (Rwy 18C-36C) 126.4 257.8 (Rwy 18R-36L) 133.35 257.8	GND CON 121.8 348.6 (WEST) 121.9 348.6 (EAST)	CLNC DEL 127.15 348.6
---	--	---	---	---

△ 1847	△ 926 △ 930 △ 1633 △ 1190	CPDLC
-----------	------------------------------------	-------



ELEV 748	D	TDZE 707
----------	----------	----------

HIRL all Rwys
REIL Rwys 18L and 23
TDZ/CL Rwys 18R, 36L, 36C and 36R



3000 TOMME	VGSI and RNAV glidepath not coincident (VGSI Angle 3.00/TCH 72).						
↑	GLASI	NIVSE	MARJO	DENNE	HUNEX	KRISL	SOLMN
*LNAV only.	2500	3000	4000	5000	6000	7000	8000
↑ 1.7 NM to RWY 36C	1.7 NM	3.7 NM	1.6 NM	3.2 NM	3.2 NM	3.2 NM	3.2 NM
GP 3.00° TCH 57							
CATEGORY	A		B		C		D
LPV DA	907/18		200 (200-1/2)				
LNAV/VNAV DA	1229-1 3/8		522 (500-1 3/8)				
LNAV MDA	1320/40	613 (600-3/4)	1320-1 3/8	613 (600-1 3/8)			
C CIRCLING	1380-1	632 (700-1)	1500-2 1/4	752 (800-2 1/4)	1500-2 1/2	752 (800-2 1/2)	

SE-2, 11 JUL 2024 to 08 AUG 2024

SE-2, 11 JUL 2024 to 08 AUG 2024