

WAAS CH <b>56515</b> <b>W36A</b>	APP CRS <b>003°</b>	Rwy Idg TDZE Apt Elev	<b>9000</b> <b>744</b> <b>748</b>
--	------------------------	-----------------------------	---

# RNAV (GPS) Y RWY 36L

CHARLOTTE/DOUGLAS INTL (CLT)

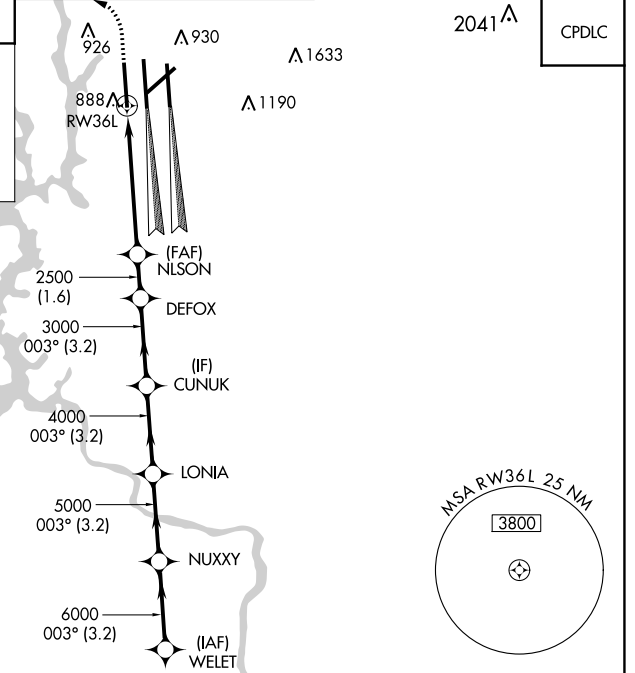
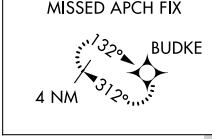
**RADAR required for procedure entry. RNP APCH.**

**⚠** Circling NA at night. Simultaneous approach authorized. LNAV procedure NA during simultaneous operations. Use of FD or AP required during simultaneous operations. For inop ALS, increase LNAV/VNAV all Cats visibility to RVR 4500 and increase LNAV Cats C/D visibility to RVR 6000. For uncompensated Baro-VNAV systems, LNAV/VNAV NA below -10°C or above 54°C.

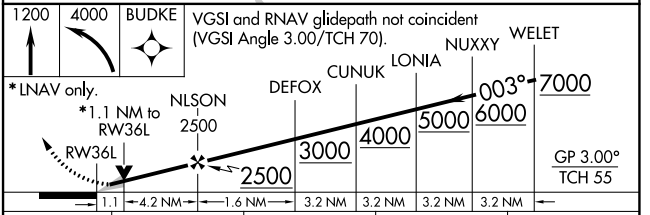
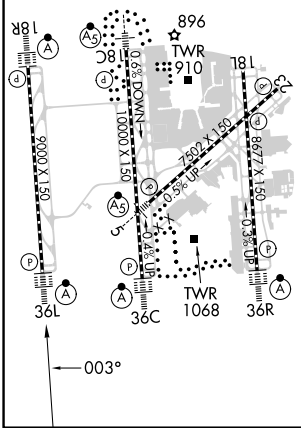
**ALS-F-2**

**MISSED APPROACH:** Climb to 1200 then climbing left turn to 4000 direct BUDKE and hold.

D-ATIS ARR <b>121.15</b> DEP <b>132.1</b>	CHARLOTTE APP CON (001°-119°) <b>128.32</b> (120°-295°) <b>120.05</b> (296°-360°) <b>134.75</b> (180°-359°) <b>257.2</b> (360°-179°) <b>307.8</b>	CHARLOTTE TOWER (Rwys 18L-36R) <b>118.1 257.8</b> (Rwy 18C-36C) <b>126.4 257.8</b> (Rwy 18R-36L) <b>133.35 257.8</b>	GND CON <b>121.8 348.6</b> (WEST) <b>121.9 348.6</b> (EAST)	CLNC DEL <b>127.15</b> <b>348.6</b>
---	--	---	---	---



ELEV 748	<b>D</b>	TDZE 744
HIRL all Rwys REIL Rwys 18L and 23 TDZ/CL Rwys 18R, 36L, 36C and 36R		



CATEGORY	A	B	C	D
LPV DA	944/18		200 (200-½)	
LNAV/VNAV DA	1049/24		305 (400-½)	
LNAV MDA	1140/24	396 (400-½)	1140/35	396 (400-¾)
<b>C</b> CIRCLING	1380-1	632 (700-1)	1500-2¼ 752 (800-2¼)	1500-2½ 752 (800-2½)

SE-2, 11 JUL 2024 to 08 AUG 2024

SE-2, 11 JUL 2024 to 08 AUG 2024