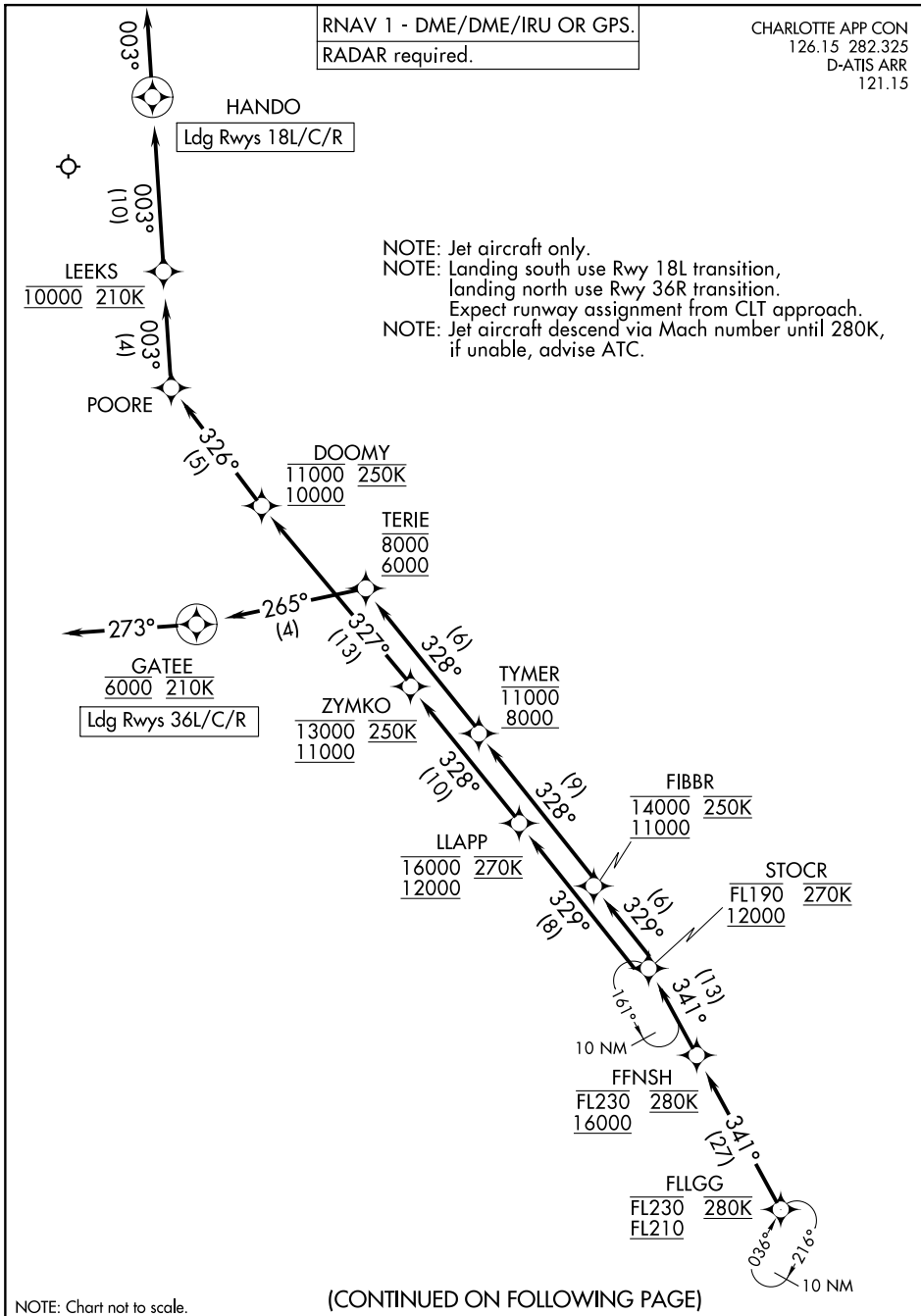


# STOCR FOUR ARRIVAL (RNAV) Arrival Routes

RNAV 1 - DME/DME/IRU OR GPS.  
RADAR required.

CHARLOTTE APP CON  
126.15 282.325  
D-ATIS ARR  
121.15

NOTE: Jet aircraft only.  
NOTE: Landing south use Rwy 18L transition,  
landing north use Rwy 36R transition.  
Expect runway assignment from CLT approach.  
NOTE: Jet aircraft descend via Mach number until 280K,  
if unable, advise ATC.



SE-2, 11 JUL 2024 to 08 AUG 2024

SE-2, 11 JUL 2024 to 08 AUG 2024

NOTE: Chart not to scale.

(CONTINUED ON FOLLOWING PAGE)

# STOCR FOUR ARRIVAL (RNAV) Arrival Routes