

WAAS CH 73009 W09A	APP CRS 085°	Rwy Idg TDZE 6144 Apt Elev 6160	7985
----------------------------------------	------------------------	-----------------------------------------------------	-------------

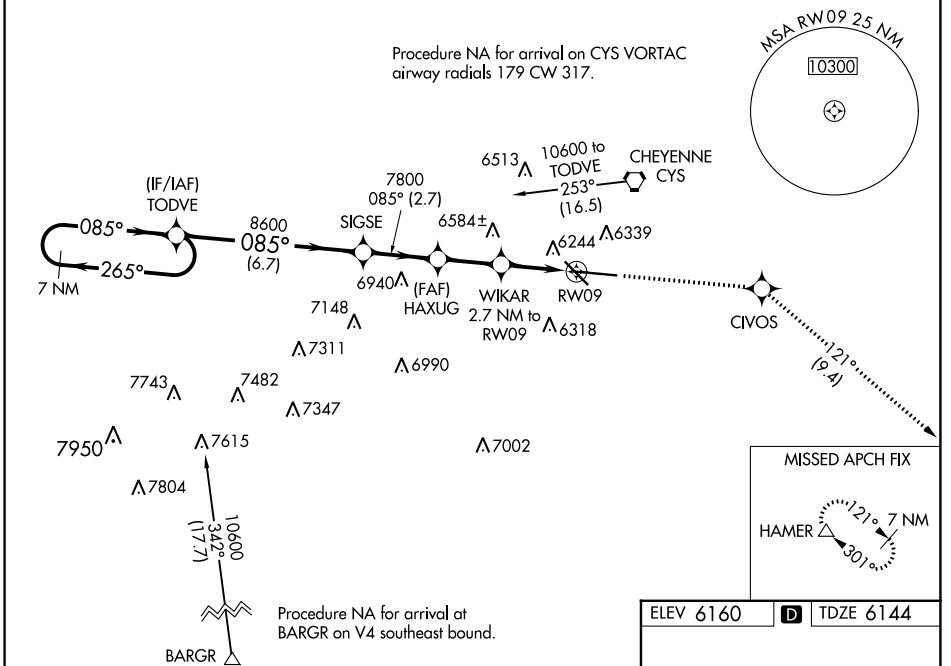
RNAV (GPS) RWY 9

CHEYENNE RGNL/JERRY OLSON FLD (CYS)

⚠ For uncompensated Baro-VNAV systems, LNAV/VNAV NA below -27°C (-16°F) or above 36°C (96°F). DME/DME RNP-0.3 NA. Rwy 9 helicopter visibility reduction below 3/4 SM NA.

MISSED APPROACH: Climb to 8500 direct CIVOS and on track 121° to HAMER and hold.

ATIS 134.425 278.3	CHEYENNE APP CON* 124.55 263.075	CHEYENNE TOWER* 118.7(CTAF) 0 257.8	GND CON 121.9 254.275	UNICOM 122.95
------------------------------	--------------------------------------------	------------------------------------------------------	---------------------------------	-------------------------



7 NM Holding Pattern	TODVE	SIGSE	HAXUG	WIKAR 2.7 NM to RW09	*RNAV only
10600 ← 265°	← 085°	8600	7800	*1.1 NM to RW09	
GP 3.00° TCH 50		7800	*7060		
	6.7 NM	2.7 NM	2.3 NM	1.6 NM	1.1
CATEGORY	A	B	C	D	
LPV DA	6473-1¼		329 (400-1¼)		
LNAV/VNAV DA	6543-1½		399 (400-1½)		
LNAV MDA	6540-1		396 (400-1)		6540-1¼ 396 (400-1¼)
CIRCLING	6640-1 480 (500-1)		6900-2 740 (800-2)		6940-2½ 780 (800-2½)

ELEV 6160 TDZE 6144

MISSED APCH FIX
HAMER 121° 7 NM 301°

REIL Rwy 9, 13, and 31
HIRL Rwy 9-27
MIRL Rwy 13-31

NW-1, 11 JUL 2024 to 08 AUG 2024

NW-1, 11 JUL 2024 to 08 AUG 2024