

LOC/DME I-LPI 109.1 Chan 28	APP CRS 172°	Rwy Idg 13500 TDZE 6187 Apt Elev 6187
---	------------------------	--

ILS RWY 17L (SA CAT I & II)

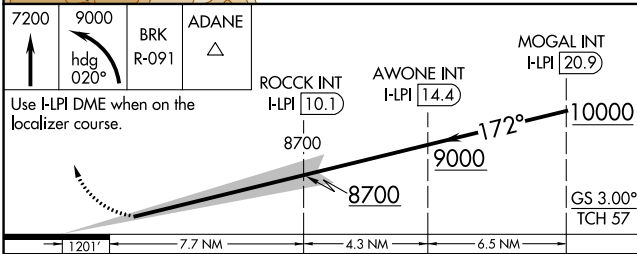
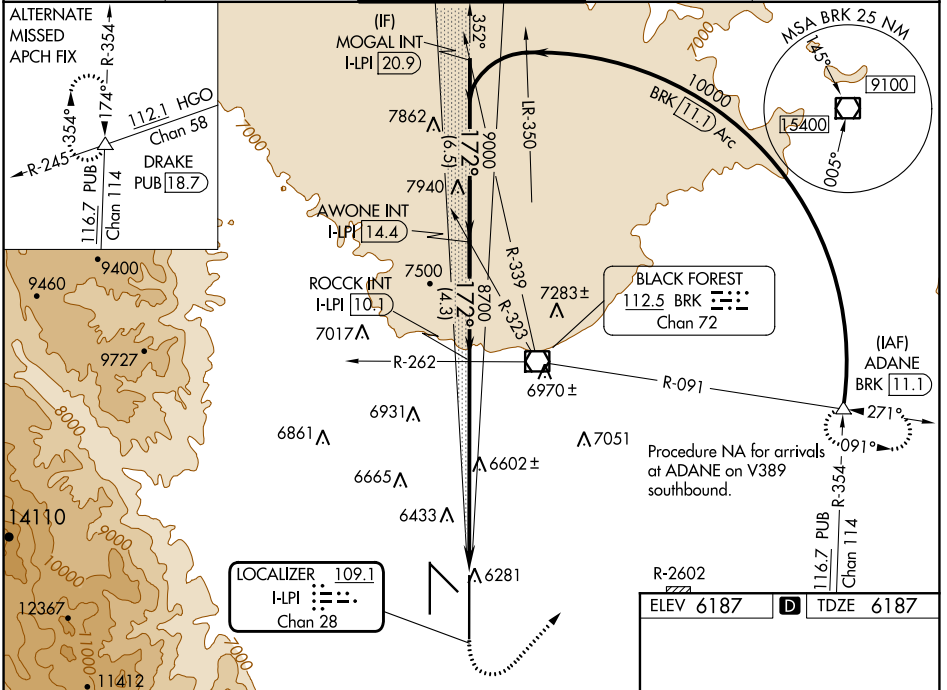
CITY OF COLORADO SPRINGS MUNI (COS)

DME or RADAR required for procedure entry.

⚠ Simultaneous approach authorized with Rwy 17R.
⚠ SA CAT I: Required specific OPSPEC, MSPEC, or LOA approval and use of HUD to DH. SA CAT II: Reduced Lighting: Requires specific OPSPEC, MSPEC, or LOA approval and use of autoland or HUD to touchdown.

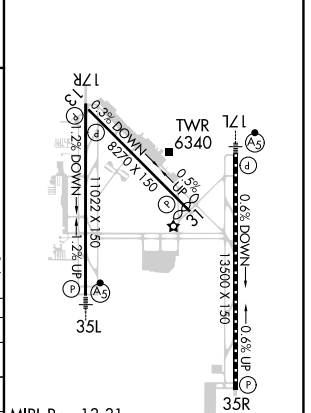
MALS MISSED APPROACH: Climb to 7200 then climbing left turn to 9000 on heading 020° and on BRK VOR/DME R-091 to ADANE INT/BRK VOR/DME 11.1 DME and hold.

ATIS 125.0 254.3	SPRINGS APP CON 124.0 257.875	SPRINGS TOWER 119.9 360.6	GND CON 121.7 348.6	CLNC DEL 134.45 363.125
----------------------------	---	-------------------------------------	-------------------------------	-----------------------------------



CATEGORY	A	B	C	D
S-ILS 17L	SA CAT I RA 169/14 150 DA 6337			
S-ILS 17L	SA CAT II RA 105/16 100 DA 6287			

ELEV 6187	D TDZE 6187
-----------	--------------------



SA CATEGORY I & II ILS SPECIAL AIRCREW & AIRCRAFT CERTIFICATION REQUIRED

MIRL Rwy 13-31
 HIRL Rws 17R-35L and 17L-35R
 REIL Rws 13, 17R, 31 and 35R
 TDZ/CL Rws 17L and 35R

SW-1, 11 JUL 2024 to 08 AUG 2024

SW-1, 11 JUL 2024 to 08 AUG 2024