

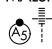
LOC I-COS <b>109.9</b>	APP CRS <b>352°</b>	Rwy ldg TDZE Apt Elev	<b>11022</b> <b>6075</b> <b>6187</b>
---------------------------	------------------------	-----------------------------	--

# ILS or LOC RWY 35L

CITY OF COLORADO SPRINGS MUNI (COS)

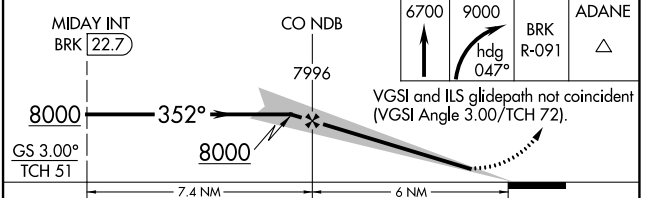
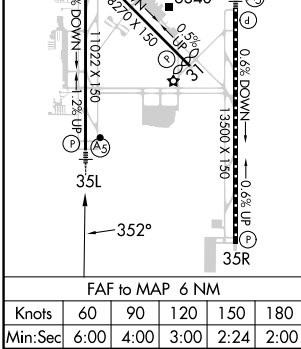
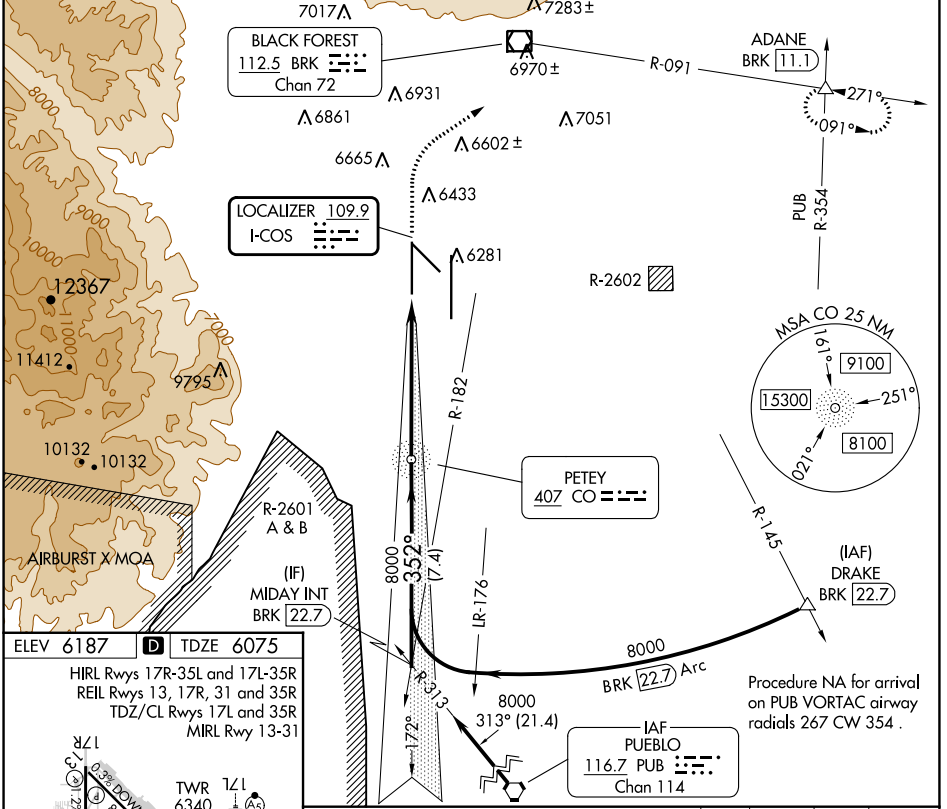
ADF required for LOC only.

**⚠** RADAR monitoring required when R-2601 in use. For inop ALS, increase S-LOC 35L Cat C/D visibility to RVR 4500.  
\*RVR 1800 authorized with use of FD or AP or HUD to DA.

MALSR 

MISSED APPROACH: Climb to 6700 then climbing right turn to 9000 on heading 047° and BRK VOR/DME R-091 to ADANE INT/BRK 11.1 DME and hold.

ATIS <b>125.0 254.3</b>	SPRINGS APP CON <b>124.0 257.875</b>	SPRINGS TOWER <b>119.9 360.6</b>	GND CON <b>121.7 348.6</b>	CLNC DEL <b>134.45 363.125</b>
----------------------------	---	-------------------------------------	-------------------------------	-----------------------------------



GS 3.00° TCH 51	7.4 NM	6 NM		
CATEGORY	A	B	C	D
S-ILS 35L*	6275/24		200 (100-½)	
S-LOC 35L	6340/24		265 (200-½)	
<b>C</b> CIRCLING	6740-1 553 (600-1)	6760-1 573 (600-1)	6980-2¼ 793 (800-2¼)	7240-3 1053 (1100-3)

SW-1, 11 JUL 2024 to 08 AUG 2024

SW-1, 11 JUL 2024 to 08 AUG 2024