

LOC/DME I-AHI 109.1 Chan 28	APP CRS 352°	Rwy Idg TDZE Apt Elev	13500 6118 6187
--	------------------------	-----------------------------	--

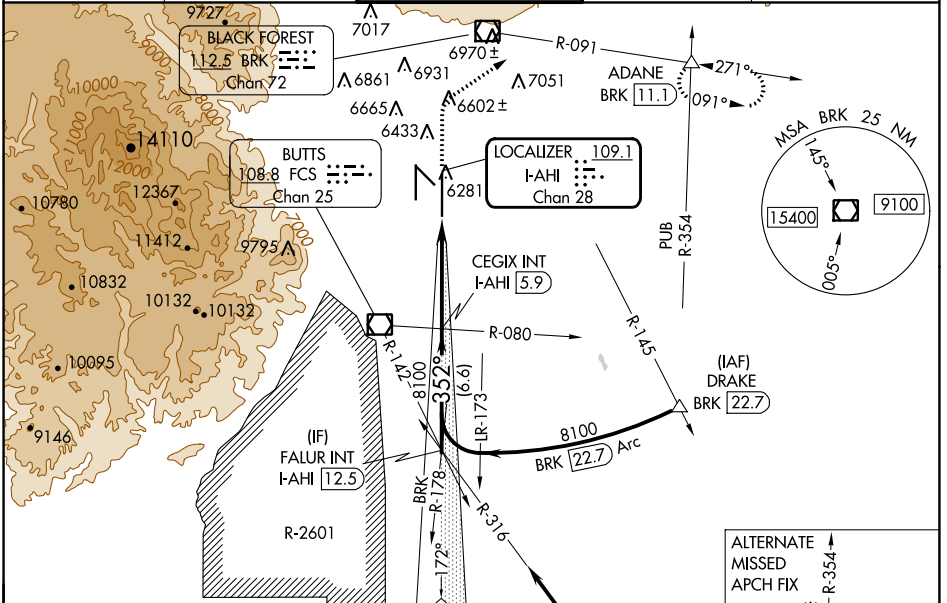
ILS or LOC RWY 35R

CITY OF COLORADO SPRINGS MUNI (COS)

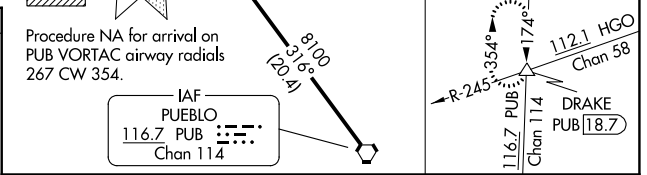
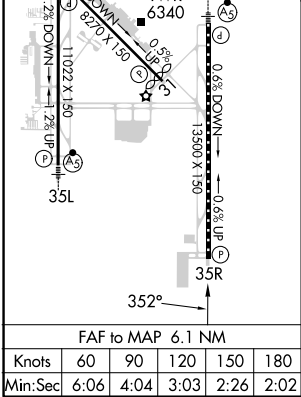
⚠ RADAR required when R-2601 in use.

⚠ MISSED APPROACH: Climb to 6700 then climbing right turn to 9000 on heading 047° and on BRK VOR/DME R-091 to ADANE INT/BRK 11.1 DME and hold.

ATIS 125.0 254.3	SPRINGS APP CON 124.0 257.875	SPRINGS TOWER 119.9 360.6	GND CON 121.7 348.6	CLNC DEL 134.45 363.125
----------------------------	---	-------------------------------------	-------------------------------	-----------------------------------



ELEV 6187	D TDZE 6118
MIRL Rwy 13-31	
HIRL Rwys 17R-35L and 17L-35R	
REIL Rwys 13, 17R, 31 and 35R	
TDZ/CL Rwys 17L and 35R	



VGSI and ILS glidepath not coincident (VGSI Angle 3.00/TCH 71).	6700	9000	BRK R-091	ADANE
FAIR INT I-AHI 12.5	CEGIX INT I-AHI 5.9	hdg 047°		
8100	8100	I-AHI DME ANTENNA		*LOC only
GS 3.00° TCH 55	Use I-AHI DME when on the localizer course.	*I-AHI 0.6		
	6.6 NM	5.3 NM	0.8 NM	
CATEGORY	A	B	C	D
S-ILS 35R		6318/40	200 (200-¾)	
S-LOC 35R	6420/55	302 (300-1)	6420/45	302 (300-¾)
C CIRCLING	6740-1 553 (600-1)	6800-1 613 (700-1)	7040-2½ 853 (900-2½)	7260-3 1073 (1100-3)

SW-1, 11 JUL 2024 to 08 AUG 2024

SW-1, 11 JUL 2024 to 08 AUG 2024