

# RNAV (RNP) Z RWY 35L

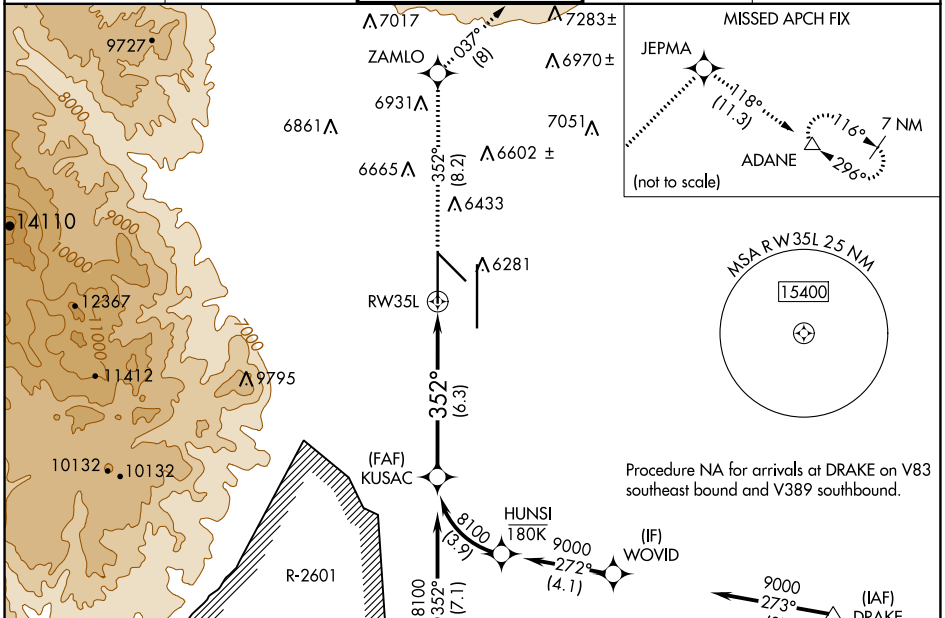
CITY OF COLORADO SPRINGS MUNI (COS)

APP CRS <b>352°</b>	Rwy Idg <b>11022</b>
	TDZE <b>6075</b>
	Apt Elev <b>6187</b>

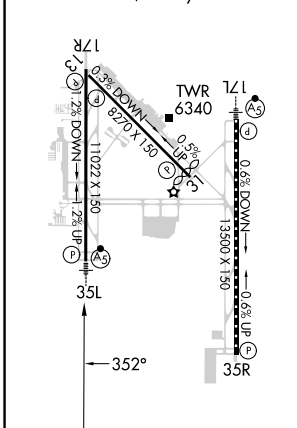
▼ For uncompensated Baro-VNAV systems, procedure NA below -21°C (-5°F) or above 45°C (113°F). GPS required. For inop MALSRS increase RNP 0.15 visibility all Cats to RVR 5000. RADAR monitoring required when R-2601 in use.

MALSRS MISSED APPROACH: Climb to 9000 on track 352° to ZAMLO and on track 037° to JEPMA and on track 118° to ADANE and hold.

ATIS <b>125.0 254.3</b>	SPRINGS APP CON <b>124.0 257.875</b>	SPRINGS TOWER <b>119.9 360.6</b>	GND CON <b>121.7 348.6</b>	CLNC DEL <b>134.45 363.125</b>
----------------------------	---	-------------------------------------	-------------------------------	-----------------------------------

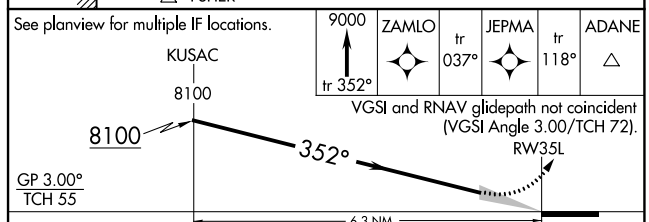


ELEV 6187	TDZE 6075
MIRL Rwy 13-31	
HIRL Rws 17R-35L and 17L-35R	
REIL Rws 13, 17R, 31, and 35R	
TDZ/CL Rws 17L and 35R	



Procedure NA for arrivals at DRAKE on V83 southeast bound and V389 southbound.

Procedure NA for arrivals at FSHER on V244 eastbound.



GP 3.00°	TCH 55	6.3 NM		
CATEGORY	A	B	C	D
RNP 0.15 DA		6372/30	297 (200-5%)	
RNP 0.30 DA		6427/40	352 (300-3%)	

## AUTHORIZATION REQUIRED

SW-1, 11 JUL 2024 to 08 AUG 2024

SW-1, 11 JUL 2024 to 08 AUG 2024