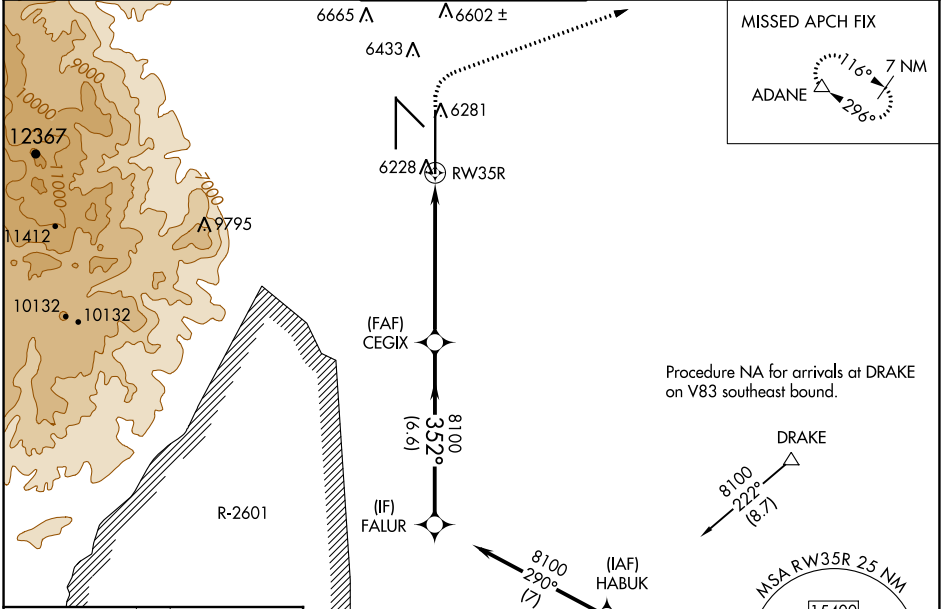


WAAS CH 53602 W35B	APP CRS 352°	Rwy Idg TDZE Apt Elev	13500 6118 6187
--	------------------------	-----------------------------	--

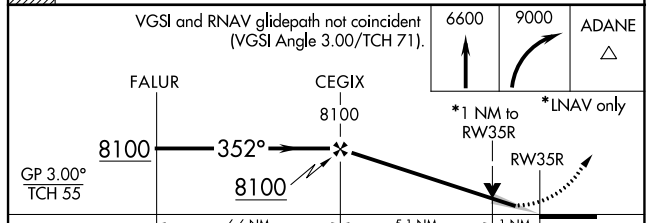
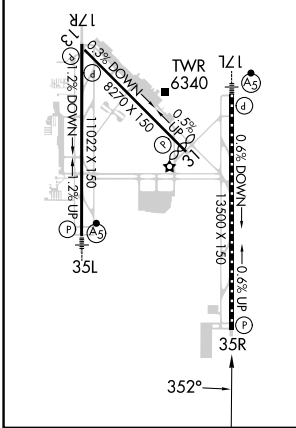
RNAV (GPS) Y RWY 35R

CITY OF COLORADO SPRINGS MUNI (COS)

▽ ▲	For uncompensated Baro-VNAV systems, LNAV/VNAV NA below -21°C (-5°F) or above 39°C (103°F). DME/DME RNP-0.3 NA. RADAR monitoring required when R-2601 in use.	MISSED APPROACH: Climb to 6600 then climbing right turn to 9000 direct ADANE and hold.		
ATIS 125.0 254.3	SPRINGS APP CON 124.0 257.875	SPRINGS TOWER 119.9 360.6	GND CON 121.7 348.6	CLNC DEL 134.45 363.125



ELEV 6187	D	TDZE 6118
MIRL Rwy 13-31 HIRL Rwys 17R-35L and 17L-35R REIL Rwys 13, 17R, 31, and 35R TDZ/CL Rwys 17L and 35R		



CATEGORY	A	B	C	D
LPV DA		6318/40	200 (200-¾)	
LNAV/VNAV DA		6399/45	281 (300-¾)	
LNAV MDA	6500/55	382 (400-1)	6500/60	382 (400-1¼)
C CIRCLING	6740-1	6800-1	7040-2½	7260-3
	553 (600-1)	613 (700-1)	853 (900-2½)	1073 (1100-3)

SW-1, 11 JUL 2024 to 08 AUG 2024

SW-1, 11 JUL 2024 to 08 AUG 2024