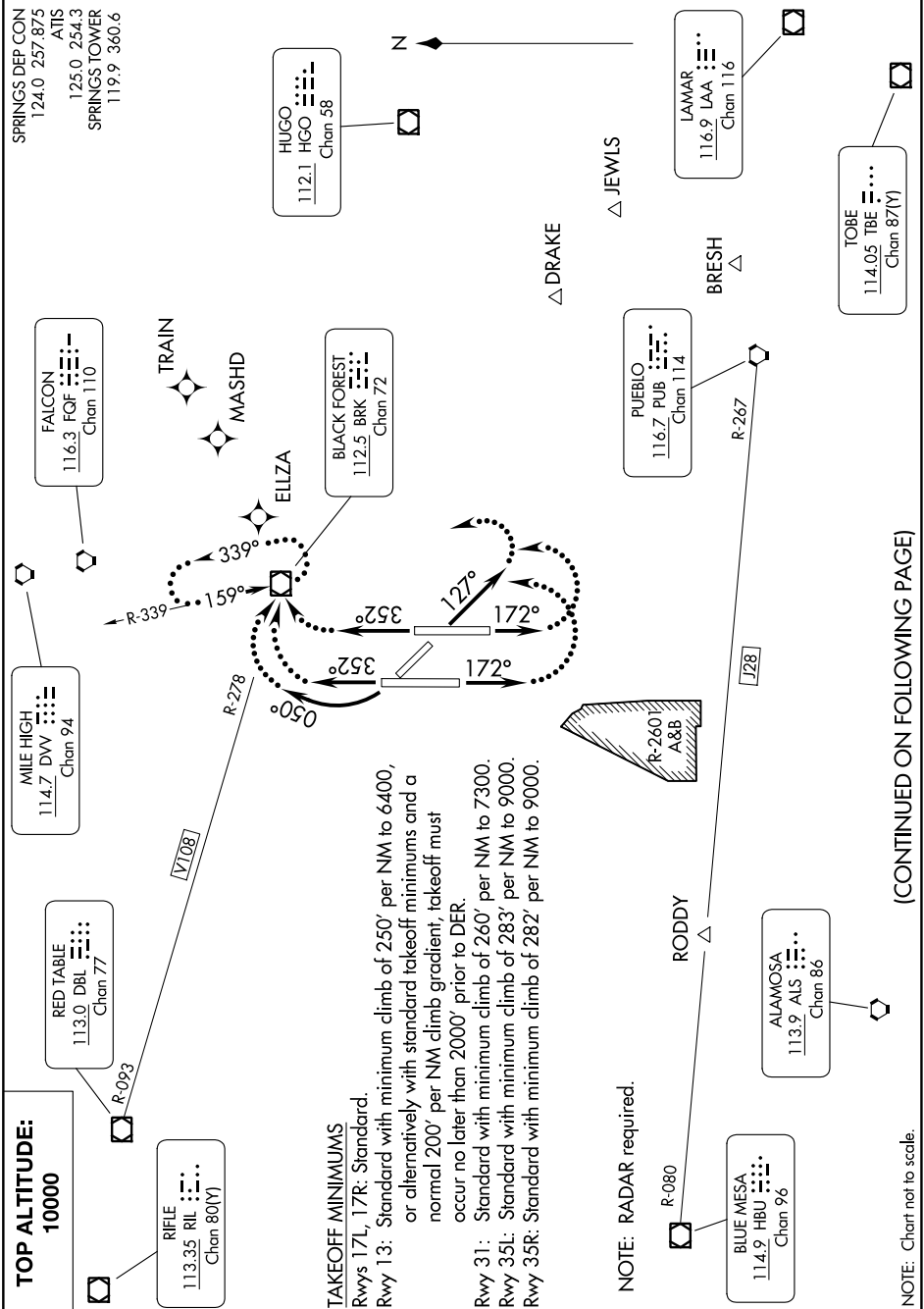


# SPRINGS SIX DEPARTURE

AL-87 (FAA)

CITY OF COLORADO SPRINGS MUNI (COS)  
COLORADO SPRINGS, COLORADO

SW-1, 11 JUL 2024 to 08 AUG 2024



**TOP ALTITUDE:**  
10000

RIFLE  
113.35 RIL : : : :  
Chan 80(Y)

RED TABLE  
113.0 DBL : : : :  
Chan 77

MILE HIGH  
114.7 DW : : : :  
Chan 94

FALCON  
116.3 FOF : : : :  
Chan 110

SPRINGS DEP CON  
124.0 Z57.8/5  
ATIS  
125.0 254.3  
SPRINGS TOWER  
119.9 360.6

HUGO  
112.1 HGO : : : :  
Chan 58

BLACK FOREST  
112.5 BRK : : : :  
Chan 72

PUEBLO  
116.7 PUB : : : :  
Chan 114

ALAMOSA  
113.9 ALS : : : :  
Chan 86

BLUE MESA  
114.9 HBU : : : :  
Chan 96

TOBE  
114.05 TBE : : : :  
Chan 87(Y)

LAMAR  
116.9 LAA : : : :  
Chan 116

**TAKEOFF MINIMUMS**  
Rwys 17L, 17R: Standard.  
Rwy 13: Standard with minimum climb of 250' per NM to 6400,  
or alternatively with standard takeoff minimums and a  
normal 200' per NM climb gradient; takeoff must  
occur no later than 2000' prior to DER.  
Rwy 31: Standard with minimum climb of 260' per NM to 7300.  
Rwy 35L: Standard with minimum climb of 283' per NM to 9000.  
Rwy 35R: Standard with minimum climb of 282' per NM to 9000.

**NOTE:** RADAR required.

**NOTE:** Chart not to scale.

(CONTINUED ON FOLLOWING PAGE)

SW-1, 11 JUL 2024 to 08 AUG 2024

# SPRINGS SIX DEPARTURE